

Risky crops—carrots, corn, cucumbers, melons, lettuce and parsnips.

These latter are classed as risky because they can be grown more cheaply in other parts of the continent, and are more than usually susceptible to climatic changes, especially at flowering time. Among market growers, celery and lettuce may be wintered over in frames and allowed to grow there the next season with very good results. Radish seed also may be grown during the summer in frames.

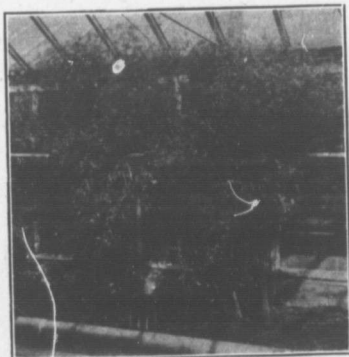
Here is a comparison seed prices in 1915 and 1918:

RETAIL PRICES	1915	1918
Onions, per lb.....	\$1 95	\$5 35
Beets, per lb.....	1 25	2 50
Beans, per lb.....	25	70
Cabbage, per ¼ lb.....	90	1 75
Radish, per lb.....	1 05	2 20
Tomato, per ¼ lb.....	1 05	1 50
Spinach, per ¼ lb.....	1 15	3 00
Celery, per oz.....	3 00	2 00
Carrots, per lb.....	1 87	3 50
Corn, per lb.....	25	50
Cucumber, per lb.....	1 40	2 25
Melons, per ¼ lb.....	65	90
Lettuce, per ¼ lb.....	65	1 00
Parsnips, per ¼ lb.....	1 15	3 50

Onions, beets, carrots, parsnips, cabbage and celery are biennial crops, or take two years for the development of seed. The seed of the root-crops, except parsnips, is sown in late June or early July as usual; the roots are lifted in September, sorted over, keeping only the specimens true to the variety type. These are then carefully stored in cool quarters in sand over winter. Parsnips are sown as usual in the spring and may be left in the ground over winter or lifted as the others. When the soil is in good shape the roots are taken out and planted in rows. The rows in each case are three feet apart, the beets being planted eighteen inches apart in the rows, the carrots and parsnips six to

eight inches in the row. As soon as the bulk of the crop is ripe it is harvested. Where only a small area is grown it may be picked as it ripens.

The onion seed bulbs are selected from the regular crop at harvest time and should be stored over winter in a fairly cool, dry place. In spring they are planted out in rows three feet apart, the bulbs six inches apart and six inches deep. They are harvested when first seed ripens and are allowed to dry in a cool storage where they are spread thinly.



Two "Paris Golden" Celery Plants at O.A.C. for Seed Production.

Celery is selected from the growing crop in the fall; the celery being planted in frames and covered for the winter to prevent freezing. Or if grown in a greenhouse are stored in a cellar until late February, when they are planted in the bed three feet apart each way. The seed is harvested when the bulk of it is ripe.

Cabbage plants are selected in the fall and are generally stored in pits or planted directly in the field where they are to grow. When set they should be four feet by two feet, the top of the

(Continued on page xvii.)