

of Toronto Island to the eastern channel and east to Victoria Park, a distance of about 14 miles.

The expenditure involved in this development is being borne jointly by the Dominion Government, the City of Toronto and the Toronto Harbor Commission. Prelimi-

Humber, and the reclamation behind the breakwater of about 190 acres of new land. The sheltered waterway, which will extend all the way from the Humber to Victoria Park, has a width of about 500 ft., on the average, in this western section.

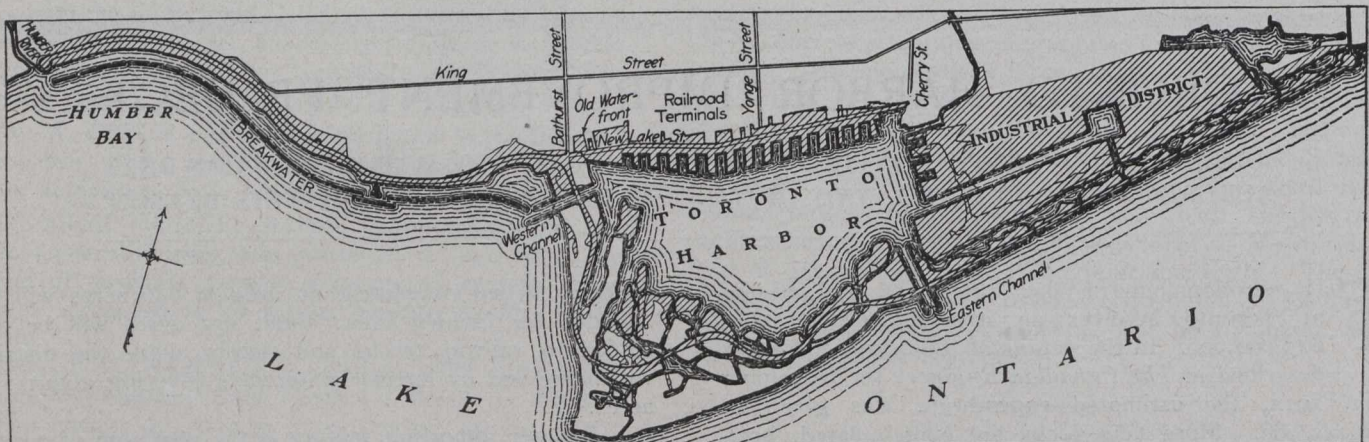


Fig. 2.—General Plan of Improvements Under Way. Hatched Portion Indicates Reclaimed Areas.

nary plans were completed in 1912, and after approval by the Toronto city council and Federal Government in June, 1913, preparations at once began for the early commencement of work. The undertaking was divided into three sections, the western section comprising a length extending from the Humber River to the vicinity of Bathurst Street and the western channel; the central section, including the water front of the inner harbor and the bay

The central portion includes the reclamation of 352 acres of park land around Toronto Island, the development of a number of lagoons, etc., and a system of boulevards winding their way through and forming a connecting link with those of the eastern and western sections. The central section includes also the dock development and the reclamation of a 17-acre industrial site near the present western harbor entrance.

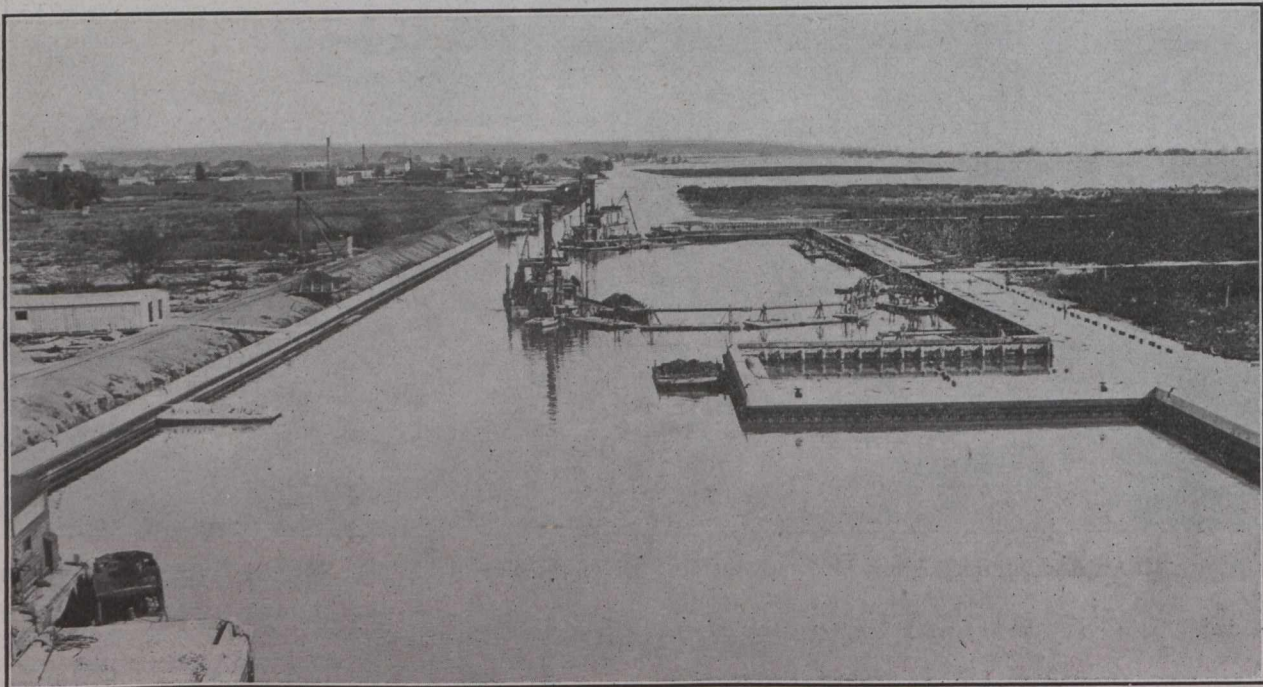


Fig. 3.—General View, Looking East, of Retaining Wall of Don Diversion Channel.

shore of the Island to a line joining the eastern channel and Parliament Street; and the eastern section comprising that portion from the eastern channel to Victoria Park.

In the western section the work is almost entirely that of shore protection, and park reclamation. It includes the construction of a breakwater at a distance varying from 500 to 900 ft. from the present shore line, a retaining wall about 900 ft. long near the mouth of the

The eastern section includes the construction of a sea-wall from the eastern channel to the eastern city limits, about 700 ft. beyond the sand-bar at present existing there. This sea-wall will be  $4\frac{1}{3}$  miles in length and the area between it and shore will be, for the most part, the industrial district mentioned above, filled in to an elevation of 8 ft. above mean water level. There will also be an extensive parkage between the sea-wall and the industrial