

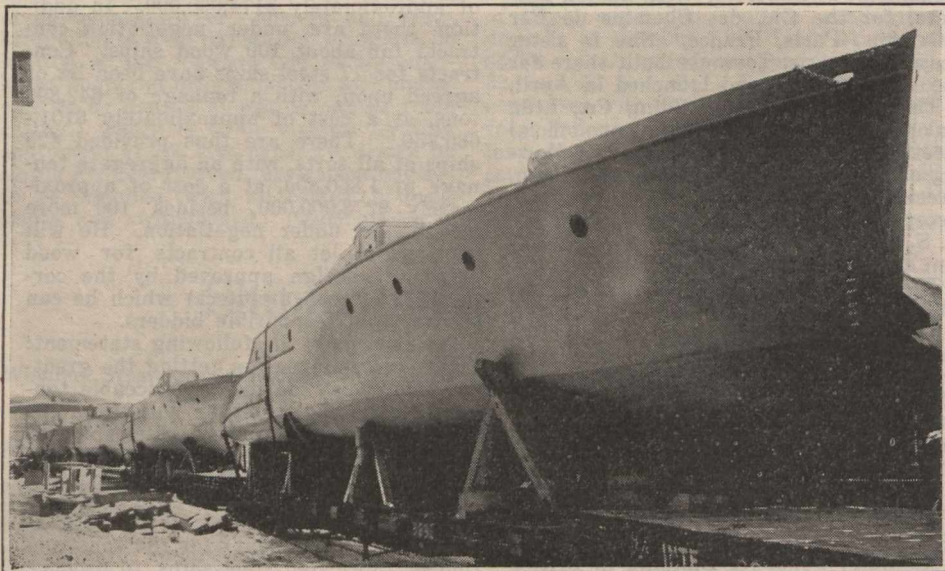
## Motor Boat Submarine Chasers Built in Canada.

During recent months much has been heard of submarines and submarine warfare. Many devices have been made to combat the undearsea craft, one of the best and most successful being fast motor

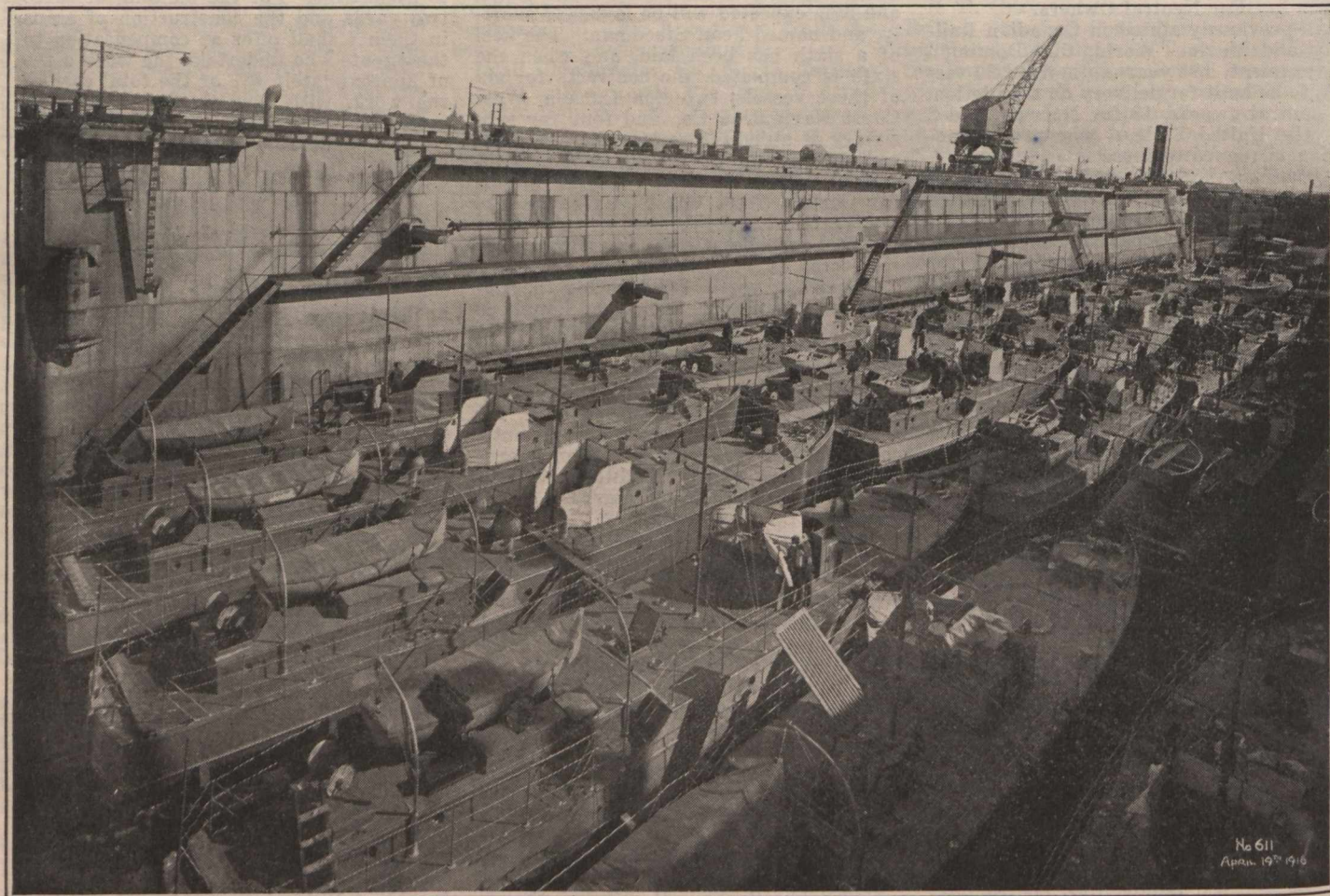
driven boats, and practically of a new design. The dimensions are: length overall, 80 ft.; beam extreme, 12 ft.; depth at side, from top of rabbet to top of beam, 6 ft.

this power plant a speed of 20 knots was easily exceeded. Fuel is carried in four tanks. The boats have fine lines and are very handsome looking, although sturdily built, and when running at high speeds leave a good clean wake. They are flush decked, with a small steering and chart room just forward of amidships, and also a small house or casing over the engine and state rooms. Forward of the steering shelter is a quick firing gun, while aft is a lifeboat about 14 ft. long.

The hulls are subdivided by 5 steel and 1 wooden, watertight bulkheads. In the fore peak is a store room for provisions, etc., also gasilen tanks, behind which is a crew space, with ample accommodation for 8 men, while aft are smaller but more comfortable quarters for 2 officers. The floors in the living quarters are covered with linoleum. The engine room floor, of white oak, is covered with light sheet metal. Hinged hatches and ladders lead into the store room and crew's quarters, also the engine and dining rooms. A companionway, with slide and steps, leads down to the staterooms. The keel and stem are of white oak, 1 3/4 in. frames, 2 1/2 in. deck beams and 2 1/4 in. roof beams of the same material. The keelsons and planking are of yellow pine, bulkheads and cabin top of white pine decking and cabin sides of Oregon pine. The rudder is of the outboard balanced type and is



Five Submarine Chasers Loaded on Cars for Transport to the Atlantic Coast.



Fleet of Thirty Submarine Chasers in a Canadian Dry Dock.

boats known as submarine chasers. Several hundred of these submarine chasers have been built in Canada within the past 12 months, 550 having been built at one shipyard. They are twin screw, gasoline

They are furnished with 2 standard right and left gasoline marine engines, having 6 cylinders 10 x 11 in. and developing 220 h.p. The engines are fitted a short distance aft of amidships. With

made of manganese bronze, as are also the propellers. They are elaborately fitted out, being complete in every detail, and have electric light. They have proved very useful as patrol boats.