

senger Agent, Montreal, and latterly acting City Passenger and Ticket Agent there, has been appointed City Passenger and Ticket Agent, vice W. H. Clancy, retired.

J. MARKEY, heretofore Master Mechanic, Toronto, has been appointed Master Mechanic, Ontario Lines. Office, Toronto.

J. R. DONNELLEY, heretofore Master Mechanic, Northern Division, Allandale, Ont., has been appointed Assistant Master Mechanic, Ontario Lines. Office, Allandale, Ont. The position of Master Mechanic, Northern Division, has been abolished.

W. H. SAMPLE, heretofore Master Mechanic, Ottawa Division, Ottawa, Ont., has been appointed Master Mechanic, Western Lines, vice Garret Vliet, Master Mechanic, Western Division, deceased. Office, Battle Creek, Mich. The position of Master Mechanic, Ottawa Division, has been abolished.

H. G. SMITH, heretofore City Passenger and Ticket Agent, G. T. P. R., Vancouver, B. C., has been appointed Assistant City Passenger Agent, G. T. R., Grand Rapids, Mich.

The following station agents have been appointed,—Brockville, Ont., pass., A. E. Parker; Seagrave, Ont., F. S. Allin; Middlemiss, Ont., L. E. Baughman; Ekfrid, Ont., A.

Canadian Northern Railway Earnings, Etc.

Gross earnings, working expenses, net earnings, increases, or decreases, compared with those for 1913-14, from July 1, 1914:—

| | Gross Earnings | Expenses | Net Earnings | Increase or Decrease |
|-------|----------------|-------------|--------------|----------------------|
| July | \$1,594,300 | \$1,163,800 | \$430,500 | x \$83,800 |
| Aug. | 1,367,700 | 1,123,000 | 244,700 | x 163,900 |
| Sept. | 2,109,900 | 1,519, 00 | 590,700 | 65,800 |
| | \$5,071,900 | \$3,806,000 | \$1,265,800 | x\$181,900 |
| Decr. | \$ 676,600 | \$ 494,700 | \$ 181,900 | |

x Decrease.
Mileage under operation at Sept. 30, 4,670, against 4,520 at Sept. 30, 1913.

Canadian Pacific Railway, Earnings, Etc.

Gross earnings, working expenses, net earnings, increases, or decreases, compared with those for 1913-14, from July 1, 1914:—

| | Gross Earnings | Expenses | Net Earnings | Increase or Decrease |
|------|-----------------|-----------------|----------------|----------------------|
| July | \$10,481,971.72 | \$6,703,525.89 | \$3,778,445.83 | x\$328,347.35 |
| Aug. | 8,917,764.33 | 6,554,606.68 | 3,373,157.70 | x 597,981.54 |
| | \$20,399,736.10 | \$13,258,132.57 | \$7,141,603.53 | x\$936,328.89 |
| Dec. | \$ 3,027,786.05 | \$ 2,091,457.16 | \$ 836,328.89 | |

x Decrease.
Approximate earnings for September, \$10,479,000, against \$11,887,000 for Sept., 1913.
At the end of September, the mileage under operating was increased to 12,319.

Grand Trunk Railway Earnings, Etc.

Gross earnings, working expenses, net earnings, etc., compared with those for 1913, from July 1, 1914:—

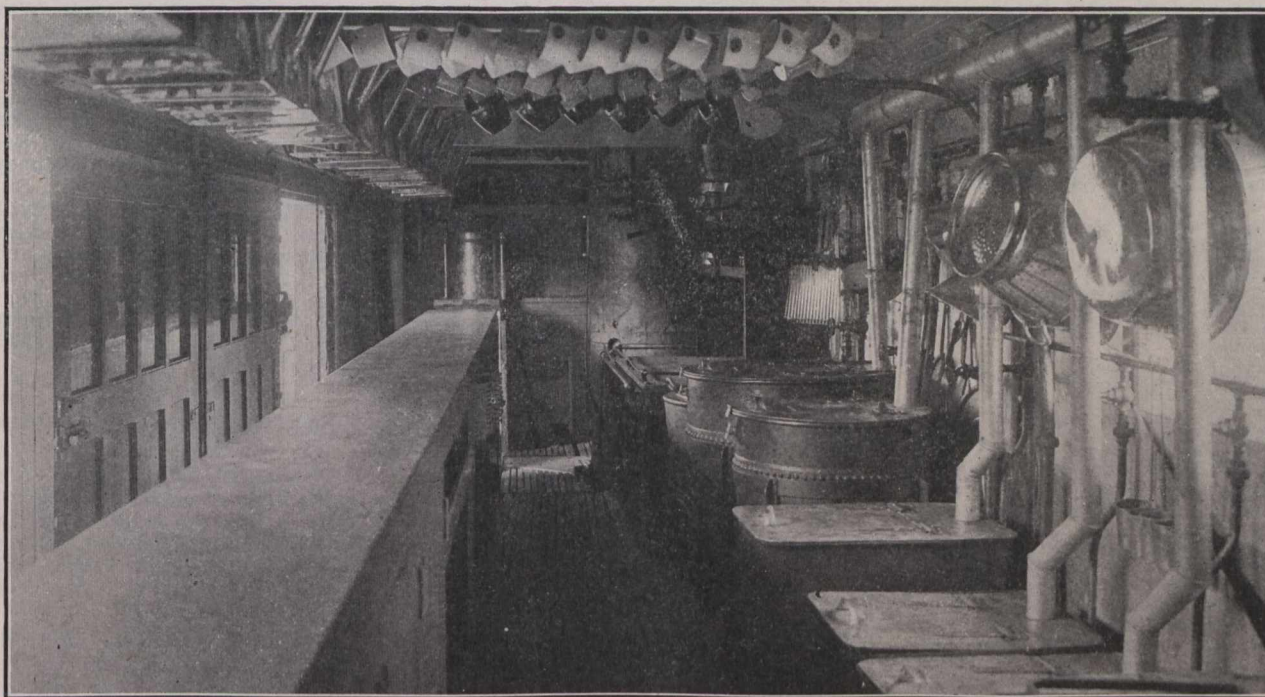
| | Gross Earnings | Expenses | Net Earnings | Increase or Decrease |
|------|----------------|-------------|--------------|----------------------|
| July | \$4,724,000 | \$3,668,200 | \$1,055,800 | |
| Aug. | 4,853,600 | 3,564,100 | 1,259,500 | x\$61,800 |
| | \$9,577,600 | \$7,232,300 | \$2,345,300 | |

x Decrease.
Approximate earnings for September, \$4,671,559, against \$4,870,641 for Sept., 1913.
Mileage under operation at Sept. 30, 4,533, as at Sept. 30, 1913.

Grand Trunk Pacific Railway Earnings.

The approximate earnings of the Prairie Section and Lake Superior Branch, 1,104 miles, for September were \$718,744, against \$756,779 for Sept., 1913. Aggregate earnings for three months ended Sept. 30, \$1,619,197, against \$1,738,371 for the same period 1913.

N.T.R. Car Ferry.—In commenting on the final completion of the National Transcontinental Ry., which is expected to take place early in November, the Toronto Mail and Empire of Oct. 15 says:—"The war and its effect on naval shipyards in England has



Interior of military commissary car, Canadian Pacific Railway. A full description of these cars with floor plan was published in Canadian Railway and Marine World for October, page 463.

E. Beales; Sebringville, Ont., F. A. Malcolm; Burford, Ont., W. J. Meredith; Harley, Ont., G. Swan.

National Transcontinental Ry.—Consequent on the rapidly approaching completion of this line, the following officials have retired from the service. D. Macpherson, M. Can. Soc. C. E., Assistant to the Chairman; R. F. Uniacke, M. Can. Soc. C. E., Bridge Engineer; and A. L. Ogilvie, Purchasing Agent. W. S. Lawson is acting Bridge Engineer and G. A. Briggs acting Purchasing Agent.

GEO. S. HODGINS, Assistant Engineer, Mechanical Department, Ottawa, has resigned and removed to New York.

It is reported that 2,806 C.P.R. employes hold first aid certificates, an increase of 1,830 during the year ended Oct. 1. During the same period these men rendered first aid in 1,370 cases of accident or illness.

United States Shipping Registry.—It is reported from Washington, D.C., that 60 foreign built vessels, aggregating 233,781 tons, have been transferred to the U.S. register under the recently enacted laws. Of these, 54 were formerly in the British register, four were German, and two Belgian. Fifty-seven were operated on the Atlantic Ocean, and three on the Pacific Ocean; 19 were passenger vessels, 37 were freight vessels, and 4 were not placed. Of the total 46 were steamships, and the balance sailing vessels and barges.

London and Lake Erie Ry. and Transportation Co.—The following directors have been elected for the current year: W. K. George, President; G. B. Woods, Vice President; G. O. Sommers, J. W. Scott, J. B. Holden, T. H. Purdom, J. Purdom, J. Milne. L. Tait has been appointed Secretary-Treasurer, and W. N. Warburton has been reappointed General Manager and Purchasing Agent.

delayed the delivery of the car ferry Leonard for use between Quebec and Levis." The Leonard arrived at Quebec, Aug. 15, and announcement to this effect, with a description and illustrations of the vessel, were given in Canadian Railway and Marine World for September.

Passenger rates between New York and Buffalo.—A press report states that the applications of the New York Central and other railways to be allowed to charge a passenger fare of \$9.75 between New York and Buffalo, N.Y., in either direction, has been refused by the Interstate Commerce Commission, which held that as a combination of fares between intermediate points totals only \$8.50, a \$9.75 rate would be unreasonable.

Cornwall St. Ry. Light and Power Co.—The ratepayers of Cornwall, Ont., on Oct. 14, passed a bylaw extending the company's franchise for 20 years.