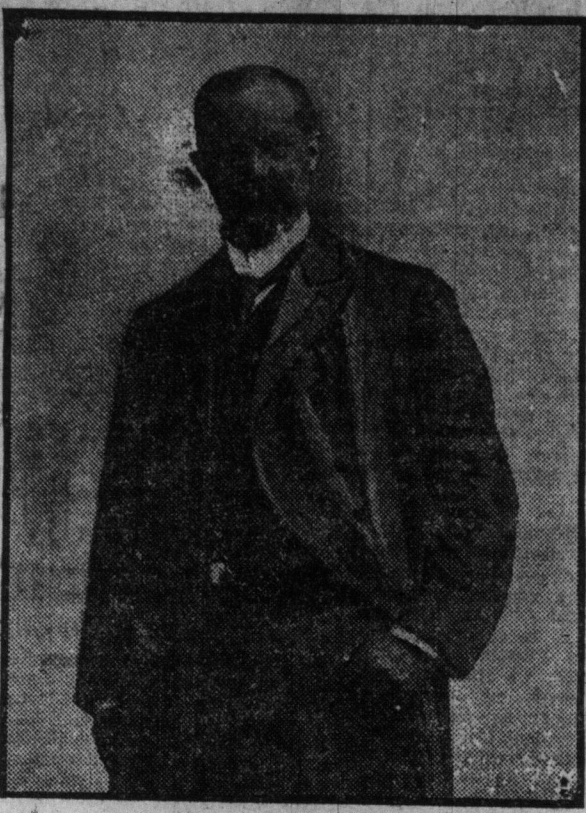


ELECTION NOTICES.

ELECTION NOTICES.

ELECTION NOTICES.



You Working Men

There are two things you notice when you shake hands with W. H. Shaw. It's easy to get near enough to him to shake hands, and you get a grip from a hand that has worked.

Right down from the day he forked hay on his father's farm down in Kent County, he has worked—worked hard day and night. All that he is he owes to work, all that he has he owes to work.

He is going to Ottawa to support Sir Wilfrid Laurier, who has recognized in such a large way the right of the workers to share in the heritage of Canada.

If you want a representative who will be just as proud to know you after the election as the day before it, whose latch-string is always out, whose sympathies are with you, who will meet you and respect your opinions, vote for Shaw.

Vote for Shaw. He will work for you.

W. H. SHAW, LIBERAL CANDIDATE FOR NORTH TORONTO.

SOUTH TORONTO---DOMINION ELECTIONS---1908



YOUR VOTE AND INFLUENCE
Are Respectfully Requested
for the Re-election of

A. C. Macdonell

Liberal-Conservative Candidate for the House
of Commons

ELECTION MONDAY, OCTOBER 26, 1908

POLLS OPEN 9 A.M. TO 5 P.M.

Central Committee Rooms 71 Victoria St. Phone Main 3205

Constituency Boundaries: NORTH BOUNDARY—Centre Line of Queen Street. SOUTH BOUNDARY—Lake Front, Including the Island. EAST BOUNDARY—Don River. WEST BOUNDARY—Sunnyside.

Sporting Students.
Principal Gilbert Smith of Jameson-
College has asked the board
of education to direct that Principal

Hagarty of Harbord Collegiate be made
to withdraw certain statements which
he was reported to have made, to the
effect that some of the students of

Jameson Collegiate merely attended in
order to strengthen the Rugby team.
Mr. Hagarty says he was incorrectly
reported.



Last Week

Must Vacate Store
of Sale OCTOBER 26th

\$25,000 WORTH OF REAL BOOT BAR-
GAINS---Men's, Women's, Children's

All Men's 5.50, 6.00 and 7.00
Shoes, Clearing 3.95

All Men's 5.00 Shoes, Clearing 3.45

All Men's 3.50, 4.00 and 4.50
Shoes, Clearing 2.75

All Ladies' 5.00, 5.50 and 6.00
Shoes, Clearing 3.75

All Ladies' 4.50 Shoes, Clearing 3.45

All Ladies' 3.50 and 4.00 Shoes,
Clearing 2.45

NO BETTER BOOTS MADE. GOOD STYLES.
CHILDREN'S LINES EQUALLY REDUCED

YOUR OPPORTUNITY

DOLLY VARDEN AND FOOT-RITE
SHOE STORE - - - 110 Yonge Street

THE REAL ISSUE.

THE REAL ISSUE in Centre Toronto is not the ability of a representative to "get things" for the riding and secure a portfolio for himself. THE REAL ISSUE is the endorsement or the condemnation of a government steeped in corruption and convicted of incapacity.

Edmund Bristol has been a faithful and vigilant champion of Toronto's interests at Ottawa. Why, then, change him for an unknown quantity?

He promises nothing except that he will continue to do his duty.

MR. BRISTOL

will speak at

Massey Hall on Tuesday Night

HEAR HIM.

COMMITTEE ROOMS:

364 Yonge St., Phone Main 3295. 1 Arthur St., Phone College 5417.
359 Spadina Ave., Phone College 3167. 359 Queen St. West, Phone Main 5682.

ELECTORS OF EAST TORONTO

Your Vote and Influence Are Respectfully Solicited for

JOSEPH RUSSELL

A MAN OF THE PEOPLE

Independent Conservative

Candidate for

EAST TORONTO

COMMITTEE ROOMS

271 Queen Street East. Phone Main 1117

785 Queen Street East. Phone Main 1777

ELECTIONS MONDAY, OCT. 26th, 1908

DOMINION ELECTIONS

MONDAY, OCTOBER 26th, 1908

Your Vote and Interest Are Respectfully Solicited For

A. E. KEMP,

Liberal-Conservative Candidate For

EAST TORONTO

COMMITTEE ROOMS.

273 Queen Street East, phone Main 2600; 2180 Queen Street East, phone
Beach 316; 499 Parliament Street, phone North 1514; N.E. corner Gerrard Street
and Pape Avenue; 695 Queen Street East, phone Main 3179; 353 Broadview Ave-
nue, phone North 3629. ed7tf

MASS MEETING

Electors of Toronto - - MASSEY HALL
Tuesday, 20th October, 1908

SPEAKERS: SIR JAMES WHITNEY, Premier of Ontario; HON. GEORGE
E. FOSTER, E. B. OSLER, A. E. KEMP, A. C. MACDONELL, EDMUND
BRISTOL.

Doors open at 7 p.m. Speaking at 8 p.m.

Band of 48th Highlanders will give a concert between 7 and 8 p.m. First
Gallery reserved for ladies and their escorts. Everybody welcome.

E. W. J. OWENS,
President Central Conservative Association. 612

CHEERS FOR MACDONELL
DOWN IN LAMB'S HALL

Enthusiastic, But Uproarious South
Toronto Conservative
Rally.

Lamb's Hall, Cherry-street, was
crowded at the Macdonell rally last
night. Tom Gearing, president of the
West Toronto Conservative Association,
acted as chairman.

Dr. John Noble said he had no use
for "Mugwumps," and if the Liber-
als sent Mr. O'Donoghue to Ottawa
he would go there to represent the
Liberal party.

George H. Gooderham, M.L.A., de-
clared that A. C. Macdonell would go
back to parliament with a tremendous
majority.

Interruptions by some of the men at
the back of the hall became rather
frequent.

When order was restored Mr. Gooder-
ham referred to the various land grants
in the west.

Mr. Gooderham closed by declaring
that the defeat of Mr. Macdonell would
be the greatest mistake South Toronto
could make.

E. H. Randall advocated the re-elec-
tion of Mr. Macdonell on the ground
that he had always been a staunch
friend to labor.

The arrival of a constable had a
sobering effect for a time on the ac-
tions of a disturbing element, but the
noise soon broke out again.

E. R. Whiteside, M.L.A., said: "I
came here to thank you for the splen-
did support you gave Dr. Pyne and
myself."

The Laurier Government, Mr. White-
side said, had acted shabbily in patch-
ing up the old postoffice after it was
nearly destroyed by fire.

Chas. Hurst urged that the electors
"do the right thing" on Oct. 26 by re-
electing a good representative of labor
in the person of A. C. Macdonell.

James Stewart spoke of the intro-
duction and success of the national
policy. If things went on as they had
been "there would have to be rebel-
lion and restitution through the use of
rifles."

A. C. Macdonell said he was address-
ing from three to five meetings a day.
He had no quarrel with those Liber-
als who occupy the seats of the mighty.
He had no word to say against Mr.
O'Donoghue. "He is as square and de-
cent a man as there is in this city."

Liberal Rally To-Night

Saturday, Oct. 17
AT
Ketchum Hall

ON DAVENPORT ROAD.
W. H. SHAW, Liberal Candidate
in North Toronto.
T. C. ROBINETTE, Liberal Can-
didate in Centre Toronto.
And other Prominent Speakers
will address the electors.

NORTH TORONTO ELECTION

A Public Meeting will be held
in the interests of
HON.

GEORGE E. FOSTER

Liberal-Conservative Candidate
for North Toronto

Saturday, October 17
DOUGLAS HALL

Corner Bloor and Bathurst Streets
In addition to the candidate, other well-
known speakers will address these meetings.
DOORS OPEN 7.30 P.M.
Come early and bring your friends.

SIGNET RINGS

OPP.

Y.M.C.A.

are just as popular as
ever. We have the
different styles, all in
the best quality.
Prices run from about
\$5 to \$15 each. Our
Monogram and Crest
engraving is much
admired.

WANLESS & CO.

FINE JEWELLERS
Established 1840

396 YONGE ST., TORONTO

PASSENGER TRAFFIC.

PASSENGER TRAFFIC.

PASSENGER TRAFFIC.

PASSENGER TRAFFIC.

PASSENGER TRAFFIC.

PASSENGER TRAFFIC.

PASSENGER TRAFFIC.

PASSENGER TRAFFIC.

PASSENGER TRAFFIC.

PASSENGER TRAFFIC.

PASSENGER TRAFFIC.

PASSENGER TRAFFIC.

PASSENGER TRAFFIC.

PASSENGER TRAFFIC.

PASSENGER TRAFFIC.

PASSENGER TRAFFIC.

PASSENGER TRAFFIC.

PASSENGER TRAFFIC.

PASSENGER TRAFFIC.

PASSENGER TRAFFIC.

PASSENGER TRAFFIC.

PASSENGER TRAFFIC.

PASSENGER TRAFFIC.

PASSENGER TRAFFIC.

PASSENGER TRAFFIC.

PASSENGER TRAFFIC.

PASSENGER TRAFFIC.

PASSENGER TRAFFIC.

PASSENGER TRAFFIC.

PASSENGER TRAFFIC.

PASSENGER TRAFFIC.

PASSENGER TRAFFIC.

PASSENGER TRAFFIC.

PASSENGER TRAFFIC.

PASSENGER TRAFFIC.

PASSENGER TRAFFIC.

PASSENGER TRAFFIC.

PASSENGER TRAFFIC.

PASSENGER TRAFFIC.

PASSENGER TRAFFIC.

PASSENGER TRAFFIC.

PASSENGER TRAFFIC.

PASSENGER TRAFFIC.

PASSENGER TRAFFIC.

PASSENGER TRAFFIC.

PASSENGER TRAFFIC.

PASSENGER TRAFFIC.

PASSENGER TRAFFIC.

PASSENGER TRAFFIC.

PASSENGER TRAFFIC.

PASSENGER TRAFFIC.

PASSENGER TRAFFIC.

PASSENGER TRAFFIC.

PASSENGER TRAFFIC.

PASSENGER TRAFFIC.

PASSENGER TRAFFIC.

PASSENGER TRAFFIC.

PASSENGER TRAFFIC.

PASSENGER TRAFFIC.

PASSENGER TRAFFIC.

PASSENGER TRAFFIC.

PASSENGER TRAFFIC.

PASSENGER TRAFFIC.

PASSENGER TRAFFIC.

PASSENGER TRAFFIC.

PASSENGER TRAFFIC.

PASSENGER TRAFFIC.

PASSENGER TRAFFIC.

PASSENGER TRAFFIC.

PASSENGER TRAFFIC.

PASSENGER TRAFFIC.

PASSENGER TRAFFIC.

PASSENGER TRAFFIC.

PASSENGER TRAFFIC.

PASSENGER TRAFFIC.

PASSENGER TRAFFIC.

PASSENGER TRAFFIC.

PASSENGER TRAFFIC.

PASSENGER TRAFFIC.

PASSENGER TRAFFIC.

PASSENGER TRAFFIC.

PASSENGER TRAFFIC.

PASSENGER TRAFFIC.

PASSENGER TRAFFIC.

PASSENGER TRAFFIC.

PASSENGER TRAFFIC.

PASSENGER TRAFFIC.

PASSENGER TRAFFIC.

PASSENGER TRAFFIC.

PASSENGER TRAFFIC.

PASSENGER TRAFFIC.

PASSENGER TRAFFIC.

PASSENGER TRAFFIC.

PASSENGER TRAFFIC.

PASSENGER TRAFFIC.

PASSENGER TRAFFIC.

PASSENGER TRAFFIC.

PASSENGER TRAFFIC.

PASSENGER TRAFFIC.

PASSENGER TRAFFIC.

PASSENGER TRAFFIC.

PASSENGER TRAFFIC.

PASSENGER TRAFFIC.

PASSENGER TRAFFIC.

PASSENGER TRAFFIC.

PASSENGER TRAFFIC.

PASSENGER TRAFFIC.

PASSENGER TRAFFIC.

PASSENGER TRAFFIC.

PASSENGER TRAFFIC.

PASSENGER TRAFFIC.

PASSENGER TRAFFIC.

PASSENGER TRAFFIC.

PASSENGER TRAFFIC.

PASSENGER TRAFFIC.

PASSENGER TRAFFIC.

PASSENGER TRAFFIC.

PASSENGER TRAFFIC.

PASSENGER TRAFFIC.

PASSENGER TRAFFIC.

PASSENGER TRAFFIC.

PASSENGER TRAFFIC.

PASSENGER TRAFFIC.

PASSENGER TRAFFIC.

PASSENGER TRAFFIC.

PASSENGER TRAFFIC.

PASSENGER TRAFFIC.

PASSENGER TRAFFIC.

PASSENGER TRAFFIC.

PASSENGER TRAFFIC.

PASSENGER TRAFFIC.

PASSENGER TRAFFIC.

PASSENGER TRAFFIC.

PASSENGER TRAFFIC.

PASSENGER TRAFFIC.

PASSENGER TRAFFIC.

PASSENGER TRAFFIC.

PASSENGER TRAFFIC.

PASSENGER TRAFFIC.

PASSENGER TRAFFIC.

PASSENGER TRAFFIC.

PASSENGER TRAFFIC.

PASSENGER TRAFFIC.

PASSENGER TRAFFIC.

PASSENGER TRAFFIC.

PASSENGER TRAFFIC.

PASSENGER TRAFFIC.

PASSENGER TRAFFIC.

PASSENGER TRAFFIC.

PASSENGER TRAFFIC.

PASSENGER TRAFFIC.

PASSENGER TRAFFIC.

PASSENGER TRAFFIC.

PASSENGER TRAFFIC.

PASSENGER TRAFFIC.

PASSENGER TRAFFIC.

PASSENGER TRAFFIC.

PASSENGER TRAFFIC.

PASSENGER TRAFFIC.

PASSENGER TRAFFIC.

PASSENGER TRAFFIC.

PASSENGER TRAFFIC.

PASSENGER TRAFFIC.

PASSENGER TRAFFIC.

PASSENGER TRAFFIC.

PASSENGER TRAFFIC.

PASSENGER TRAFFIC.

PASSENGER TRAFFIC.

PASSENGER TRAFFIC.