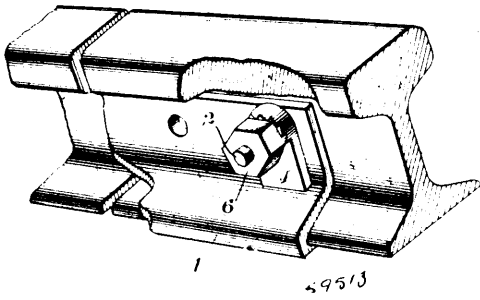
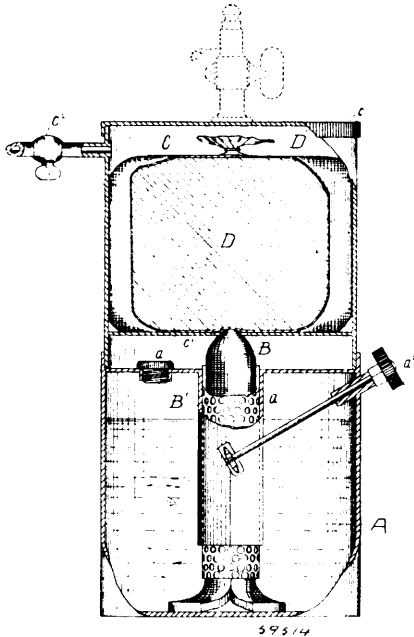


straight edge adapted to engage with the fish plate, said washer having radiating teeth on its face, and a nut having its face formed



with a single circularly extending cam incline and a locking shoulder adapted to engage with the teeth of the washer.

No. 59,514. Lamp. (Lampe.)



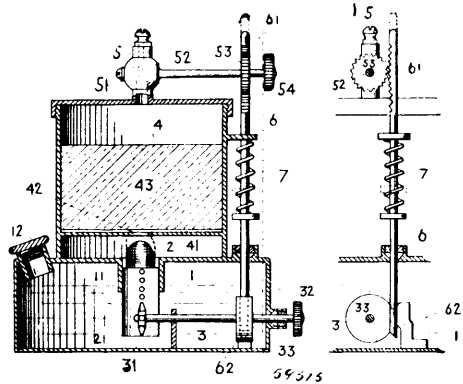
Frank Rhind and the Bridgeport Brass Company, both of Bridgeport, Connecticut, U.S.A., 4th April, 1898; 6 years. (Filed 30th August, 1897.)

Claim.—1st. In a lamp or other gas generating apparatus in combination, a liquid containing chamber, means for retaining in position a consumable mass and a wick in contact with said mass and adapted to carry liquid thereto, substantially as described. 2nd. In a lamp or other gas generating apparatus, in combination, a liquid containing chamber, means for retaining in position a consumable mass, a wick normally in contact with said mass and adapted to carry liquid thereto, and means for regulating the volume of liquid so carried, substantially as described. 3rd. In a lamp or other gas generating apparatus in combination, a liquid containing chamber, means for retaining in position a consumable mass, a wick normally in contact with said mass and adapted to carry liquid thereto, and means for increasing or diminishing the contact of said wick with said mass, substantially as described. 4th. In a lamp or other gas generating apparatus in combination, a liquid containing chamber, a solid containing chamber adjacent thereto, an aperture in said second chamber, a wick in said first chamber having its free end normally at or near said aperture and means for adjusting said second chamber and said wick relatively to each other, substantially as described. 5th. In a lamp or other gas generating apparatus, in combination, a liquid containing chamber, a solid containing chamber adjacent thereto, an aperture in said second chamber, a wick in said first chamber having its free end at or near said aperture and means for adjusting said wick to or from said aperture, substantially as described. 6th. In a lamp in combination, means substantially as described for producing a gas from the action of a liquid on a solid body, a gas chamber, a dome or plate in said chamber adapted to condense moisture from said gas, and a trap in said chamber adapted to receive the drip from said dome. 7th. In a

lamp, in combination, means substantially as described for producing a gas from the action of a liquid on a solid body, a gas chamber, a dome or plate in said chamber adapted to condense moisture from said gas, a trap in said chamber adapted to receive the drip from said dome and a conduit from said trap to a liquid containing chamber.

No. 59,515. Gas Generating Lamp.

(Générateur de lampe à gaz.)



Frank Rhind and The Bridgeport Brass Company, both of Bridgeport, Connecticut, U.S.A., 4th April, 1898; 6 years. (Filed 30th August, 1897.)

Claim.—1st. In a lamp or other gas generating apparatus in combination, a liquid chamber, means for retaining in position a consumable mass, a gas emission valve, manually operated means for causing and discontinuing the flow of liquid to said mass, and means for automatically retaining said valve in its open position during the flow of said liquid, substantially as described. 2nd. In a lamp or other gas generating apparatus in combination, a liquid chamber, means for retaining in position a consumable mass, a gas emission valve, manually operated means for causing and discontinuing the flow of liquid to said mass, and means for automatically preventing the causing of such flow of liquid except when said valve is in its open position, substantially as described. 3rd. In a lamp or other gas generating apparatus in combination, a liquid chamber, means for retaining in position a consumable mass, a gas emission valve, manually operated means for causing and discontinuing the flow of liquid to said mass, a wick adapted to convey liquid to said mass, manually operated means for causing and discontinuing the flow of liquid through said wick, and means for automatically retaining said valve in its open position during the flow of said liquid, substantially as described. 4th. In a lamp or other gas generating apparatus in combination, a liquid chamber, means for retaining in position a consumable mass, a gas emission valve, a wick adapted to convey liquid to said mass, manually operated means for causing and discontinuing the flow of liquid through said wick, and means for automatically preventing the causing of such flow of liquid except when said valve is in its open position, substantially as described. 5th. In a lamp or other gas generating apparatus in combination, a liquid chamber, means for retaining in position a consumable mass, a gas emission valve, a wick adapted to convey liquid to said mass, manually operated means for bringing said wick and said mass into and out of contact, and means for automatically retaining said valve in its open position during such contact, substantially as described. 6th. In a lamp or other gas generating apparatus in combination, a liquid chamber, means for retaining in position a consumable mass, a gas emission valve, a wick adapted to convey liquid to said mass, manually operated means for bringing said wick and said mass into and out of contact, and means for automatically preventing the causing of such contact except when said valve is in its open position, substantially as described. 7th. In a lamp, in combination, a liquid chamber, a second chamber adapted to contain a consumable mass, a wick adapted to convey liquid to said mass, a shaft by which said wick is manually adjustable, a manually adjustable gas valve, and means for automatically retaining said valve in its open position when said wick is in contact with said mass, substantially as described. 8th. In a lamp, in combination, a liquid chamber, a second chamber adapted to contain a consumable mass, a wick adapted to convey liquid to said mass, a shaft by which said wick is manually adjustable, a gas valve and means for automatically preventing the bringing of said wick and said mass into contact except when said valve is in its open position, substantially as described.

No. 59,516. Fly Paper. (Papier tue-mouches.)

The O. and W. Thum Company, Grand Rapids, Michigan, U.S.A., 4th April, 1898; 6 years. (Filed 27th January, 1898.)

Claim.—1st. In combination with a core, a pair of discs, one at either end of the core, a web covered with fly catching compound wound upon said core and forming a roll having its ends in contact with the adjacent faces of said discs, each disc furnishing a seal for the ends of the said roll, and a suitable seal applied to the outer