

present 12-foot iron pipe. Material for this line is 2-inch Oregon fir, and was installed under the supervision of the Pacific Coast Pipe Company's engineer.

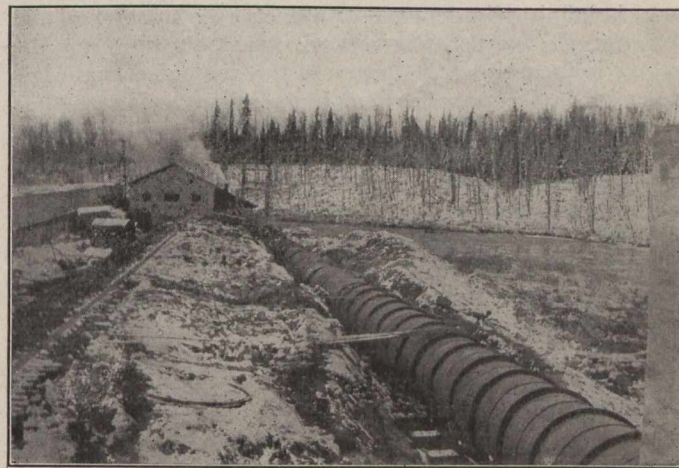
Sandy Falls plant is located in the township of Mountjoy. A timber dam of approximately 1,500 feet in



**Two 8-ft. Iron Pipes, 1,300 ft. Long, from Surge Tank (in distance) to Power House at Wawaiten Falls.**

length diverts the water into a wooden flume 14 feet by 16 feet by 700 feet long. Water from the flume is taken direct to the wheels in the power house by means of short lengths of 10-foot pipe. The power house is of timber construction covered with asbestos and corrugated iron, and contains two 1,200 horse-power Morgan-Smith wheels operating under a head of 33 feet, direct connected to two 950 k.v.a., 3-phase, 12,000-volt, Canadian Westinghouse

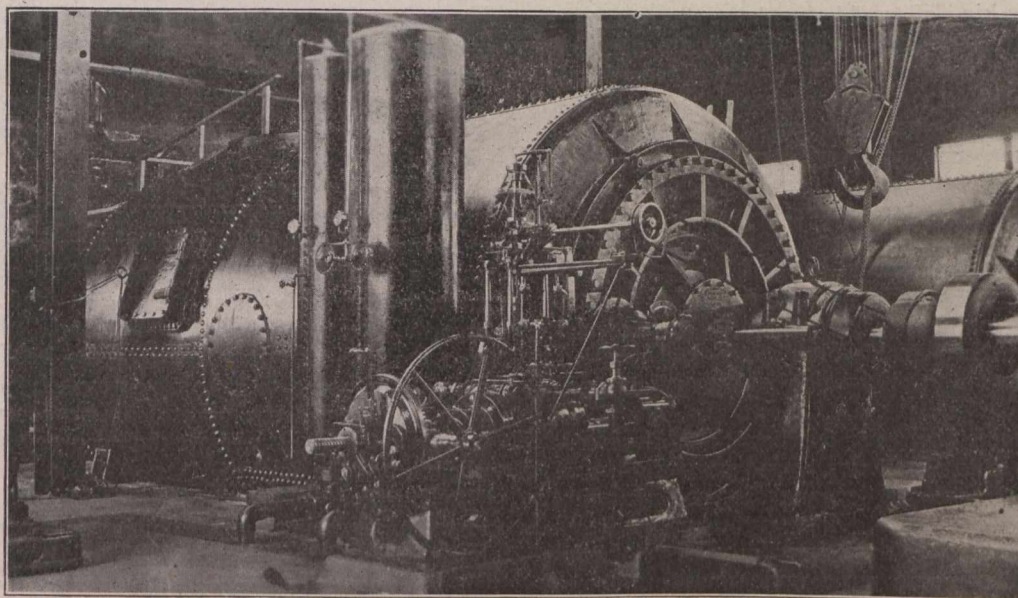
alternators with exciters on the same shaft. Switching and switchboard apparatus is of Westinghouse manufacture. During the summer of 1913, the power company commenced extensive improvements at this plant. The timber dam is being replaced with a concrete dam and wooden flume with steel pipes. It is expected this work will be completed during the summer of 1914. The transmission lines consist of two complete circuits on a single



**Sandy Falls Power Development—New Steel Pipe Leading to Power House.**

pole line from each plant, and are so built and connected that plants are operated in parallel. Power is supplied to consumers at approximately 12,000 volts, 3-phase, 25-cycle.

The power company has 35 miles of main and branch transmission lines now operating in the district.



**Two Morgan-Smith 3,300 h.p. Water-wheels with Lombard Governors, Wawaiten Falls, Ont.**

On Thursday, July 9th, the Westinghouse strike at East Pittsburgh was called off by the workmen, a large number of them reporting for work on the following day, and the works since the beginning of last week have been running full time.

On July 4, a section of the Port Arthur C.N.R. steel dock about 70 feet square and containing about 3,120 tons of steel rails, collapsed. The dock is practically new, having been built only three years ago.

As a result of the decision of the railway commissioners, made in Calgary on June 22, it is expected that the coal mines near Lethbridge, Alta., will go into operation on July 1. The understanding reached with the railways is that coal sent forward for storage and not used until after September 1 will get the new freight rate. The old rate will be paid up to September 1, and all the coal in bins on that date will be given a rebate to reduce the rate to that figure.