



EXPERT DENTISTRY

It will pay you to get an estimate on your Dental Needs from me. Special attention to out-of-town patients. Painless Extraction of Teeth. Dr. P. C. BRUNER. Phone M1061. Street and Eighth Avenue.

Oil Stocks

Up to Thursday

Value of Well	Par	Depth	Bid	Asked
5.00	1725	12 1/2	.25	.25
1.00	2960	.00%	.01%	.01%
		.01%	.02%	.02%
25	600	.00%	.00%	.00%
10	2065	.00%	.00%	.00%
1.00	232	.01	.15	.15
1.00	3170	.12	.02%	.02%
1.00	2225	.05	.10	.10
1.00	700	.12%	.08	.08
1.00	1700	.05	.05	.05
1.00	3002	.10	.12	.12
1.00	2308	.10	.00%	.00%
25	850	.00%	.02	.02
1.00	1200	.00%	2.50	2.50
1.00	3527	2.35	.00%	.00%
1.00	1821	.00%	.15	.15
10.00	2345	.15	.12%	.12%
1.00	2950	.05		

KS
Calgary Stock Exchange
R. Stock Brokers
Week Exchange
Offices—706a CENTRE STREET
880 CALGARY, ALTA

seed and weed branch.
Thursday, June 29th, 1:30 p.m.—Ad-
mission on "Weed Inspectors' Work," by
Blue, assistant supt. of Seed and
weed branch. Round table of weed in-
spectors.

ory
UP

E ENTIRE
OCK OF

AL CO., LTD.

Merchants
ALGARY

S AND FITTINGS

TION

23rd

til the Stock is cleared.

Whiskies, Brandies, Tom and
ass' Ale and Guinness' Stout, in

before the increase of freight
suit the public, by the bottle and
to any part of the City.

D 2 P. M.

and Salesman

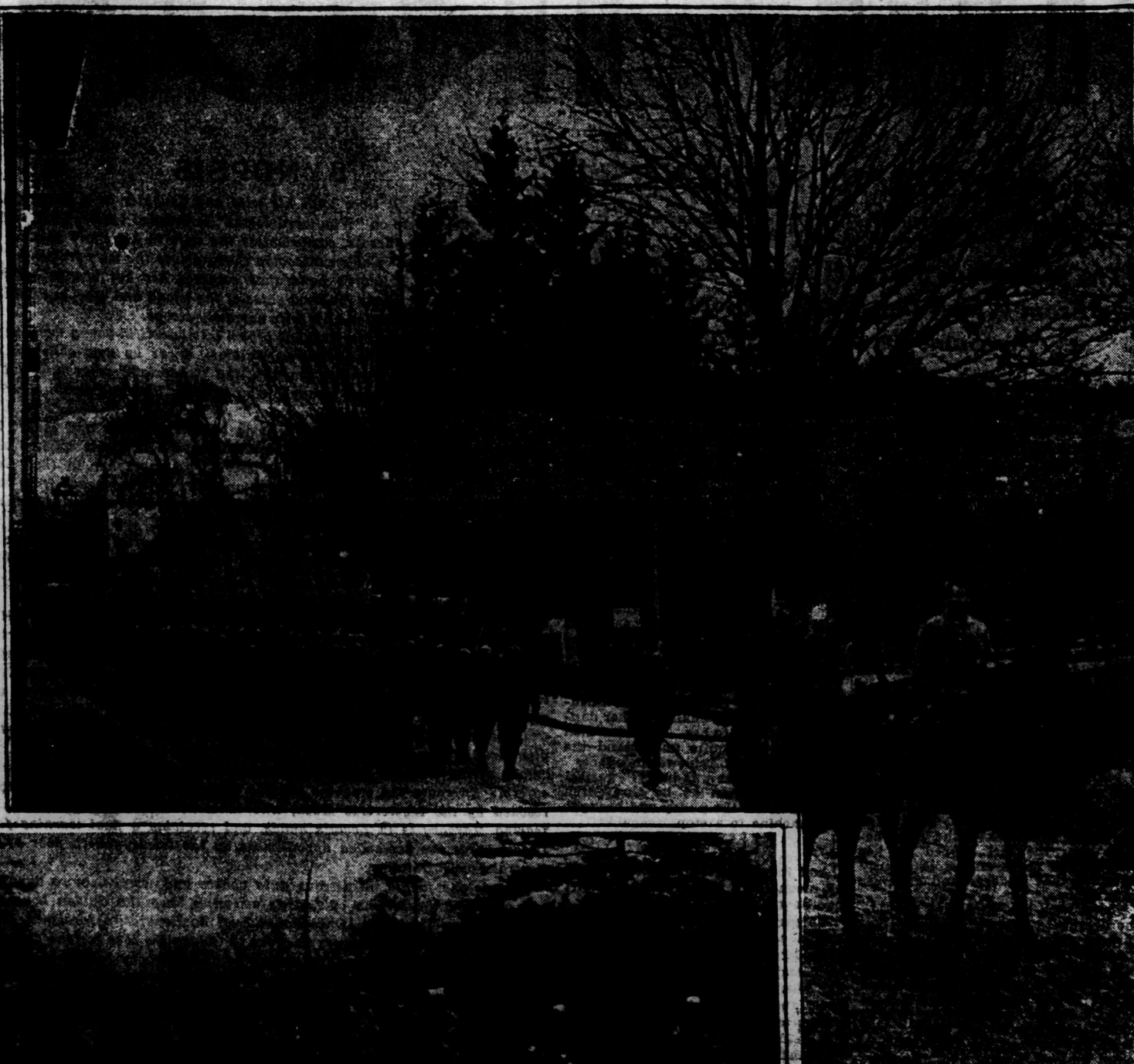
ercial Co.
LIMITED

h Avenue West

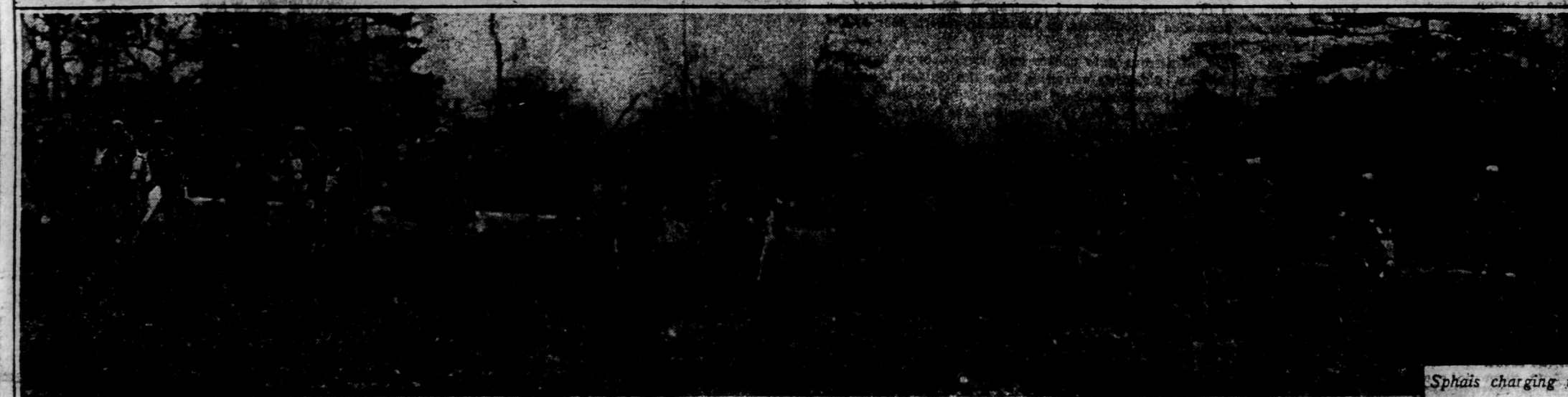
FRENCH OFFICIAL PHOTOGRAPHS TAKEN AT THE FRONT BEFORE VERDUN



Squadron ranging for the battle around Verdun.



French regiments taking positions for counter attacks.



Sphais charging the German positions.

From French
Official Military
Photographic
Record.



One of the American ambulances being driven through a screen erected to hide troops from the enemy while passing a visible point in a village road.

The American Ambulance in the Vicinity of Verdun

Photos by
Charles H. Tyler,
of Brooklyn.



At the entrance to a boyau, or connecting trench. A group of ambulance workers and Red Cross surgeons near Fey-en-Hey, Bois le Pretre, Lorraine. They are a few feet from a dressing station. The boyaus are often tunnels.



Rear of the station where the American Ambulance was quartered at Pont-a-Mousson. The barricade is to protect the men from shell fire. The second man from the left is Emery Pottle, a graduate of Amherst, and formerly professor of English at Columbia University, New York city.

Sick soldiers about to get in an ambulance to be sent back of the lines for medical treatment. They take all their equipment with them and never allow it to become separated from them so that they will be ready to return to the trenches as soon as they are well enough.