

Off to school in an  
Overland!



A horse and buggy cannot  
do a third of the work of  
one Overland

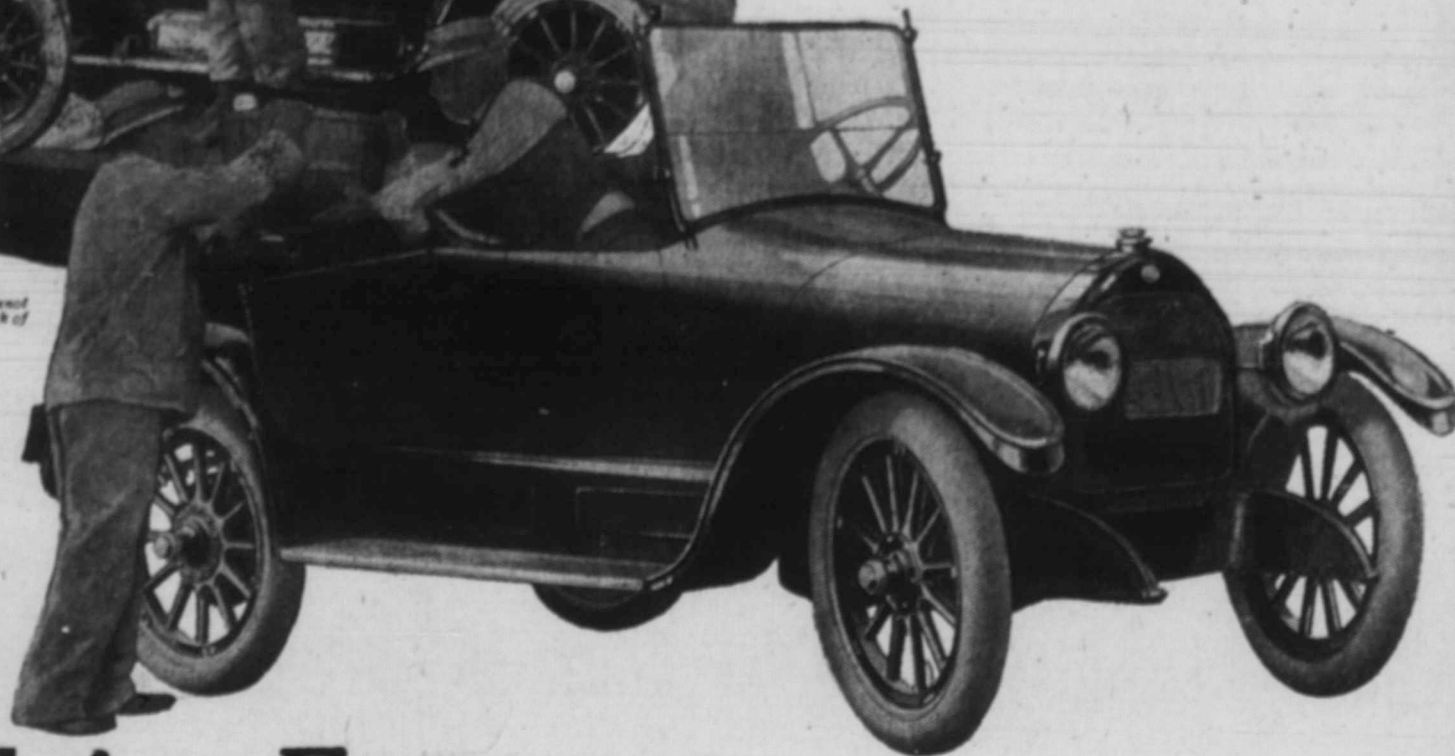
# Overland

TRADE MARK REG.

## The Thrift Car

Light Four Model 90 Touring Car

Appearance, Performance,  
Comfort, Service and Price



## Helping Farmers— To Save Time and Energy and Make Money

That motor cars are absolutely *necessary* for farmers as business equipment is shown by the fact—

That more than half of the Overland output is taken by farmers.

That the Overland is completely qualified to be fully *satisfactory* for farmers is proven by the fact—

That more than half of all Overland cars built are taken by farmers.

You need a car and that car should be an Overland.

It is not necessary to pay more than the Overland price—and complete satisfaction cannot be bought for less.

At a low cost and for economical maintenance, Model 90 gives power, prodigious power, from its perfected frugal-with-fuel motor.

It is simple to handle, has narrow turning radius, and easily operating clutch.

Catalog on request—Address Dep. 1306

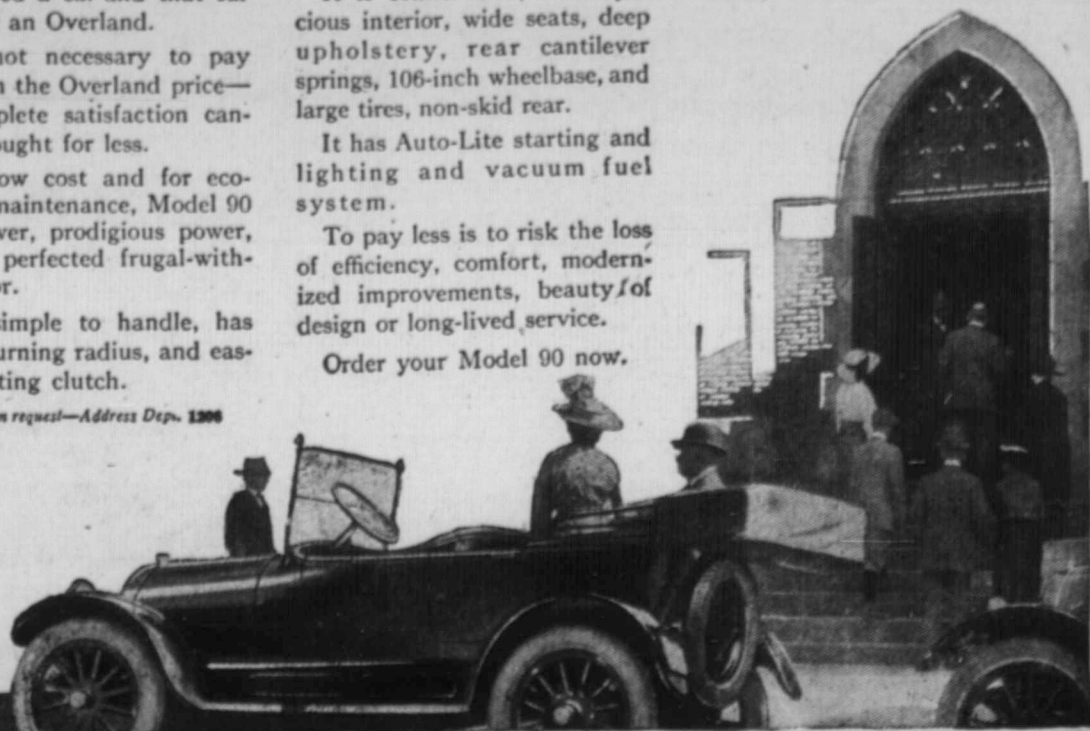
It is comfortable, with spacious interior, wide seats, deep upholstery, rear cantilever springs, 106-inch wheelbase, and large tires, non-skid rear.

It has Auto-Lite starting and lighting and vacuum fuel system.

To pay less is to risk the loss of efficiency, comfort, modernized improvements, beauty of design or long-lived service.

Order your Model 90 now.

Sunday is no longer dull  
for the farmer's family  
with an Overland



### Willys-Overland, Limited

Willys-Knight and Overland Motor Cars and Light  
Commercial Wagons

Head Office and Works, West Toronto, Ontario  
Branches: Montreal, Que., Winnipeg, Man., Regina, Sask.