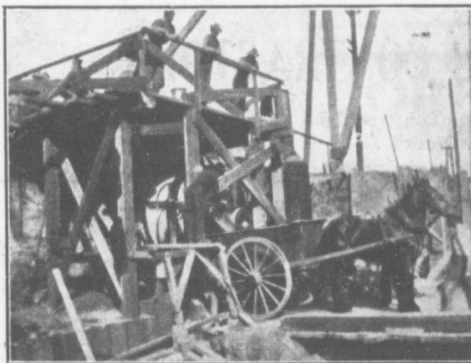


# Ransome Concrete Mixers

are used extensively on all the large concrete contracts to-day.  
The simplicity of the discharge and the thorough mixing  
appeal to all wide-a-wake contractors,



These illustrations show one of our No. 3-1906 Model Ransome Mixers recently purchased by the Canadian White Company for the concrete work on the new Montreal Street Railway Power House.

This machine mixes one cubic yard of concrete in every batch and is carried to the forms by using carts and buckets as illustrated

All Capacities . With or Without Power . In Stock

## F. H. Hopkins & Co.

Successors to the Late James Cooper

**MONTREAL**

Dunn Bros., Winnipeg, Agents

Gorman & Clancy, Alberta Agents.