

Heavy Duty Goldie Corliss STEAM ENGINES

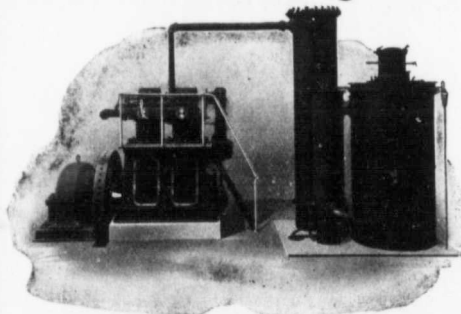
Illustration shows the Engine Room of the SUPERIOR PORTLAND CEMENT CO. AT ORANGEVILLE, ONT., equipped with one pair of CROSS COMPOUND GOLDIE CORLISS ENGINES, 20 and 40x42, Rope Drive.

THE GOLDIE & MCCULLOCH CO., LIMITED
GALT, ONTARIO, CANADA
 WESTERN BRANCH: 248 McDermott Ave., Winnipeg, Man.
 QUEBEC AGENTS: Ross & Greig, Montreal, Que.
 B. C. SELLING AGENTS: Robt. Hamilton & Co., Vancouver, B.C.

THE WARREN GAS POWER PLANT

Combines in the Greatest Possible Degree

Economy and Reliability



Warren Vertical Automatic Gas Engine and Suction Gas Producer. Double and Triple Cylinder Types up to 300 h.p.

OUR SELLING PLAN IS BASED ON THE FACT THAT EVERY PLANT WE INSTALL IS TO GIVE SATISFACTORY AND CONTINUOUS SERVICE.

IF IT FAILS, WE BEAR ALL LOSS

The WARREN has been thoroughly tested. Over 5,000 h.p. can be seen within a day's travel of Toronto, each plant doing all it was sold to do.

WRITE US for literature describing these plants in detail and ask for information regarding our SELLING POLICY and liberal guarantee.

Manufactured by

STRUTHERS-WELLS COMPANY, Warren, Pa., U.S.A.

W. H. OLIVER & CO.

Exclusive Canadian Sales Agents

McKinnon Building, Toronto