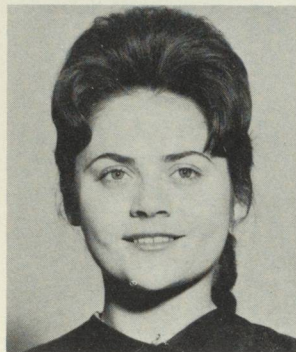
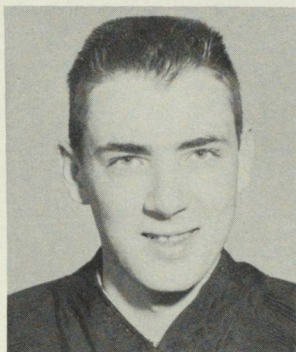


Tom Wood  
President

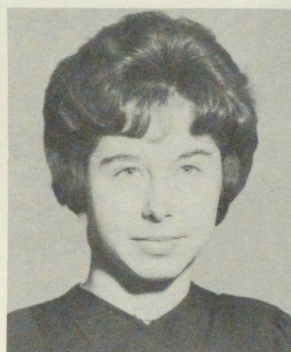
# S.R.C.



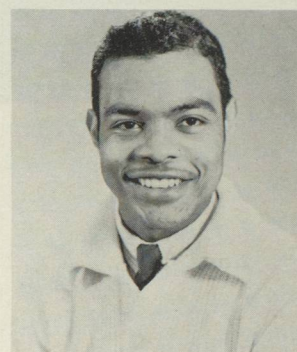
Twila Plosz  
Vice-President



Herve Langlois  
Treasurer



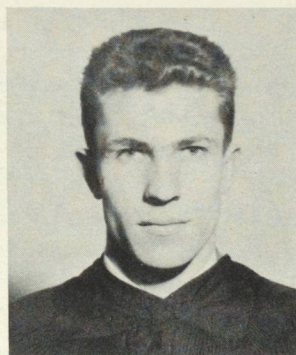
Gail Mountney  
Secretary



Geddes Ince  
Social Director



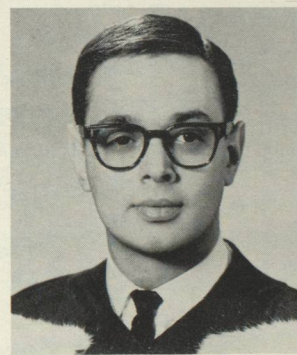
Heather Hodge  
President,  
Women's Athletic Board



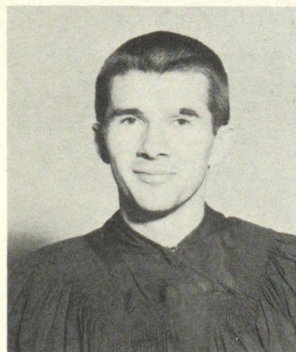
Lorne MacPherson  
President  
Men's Athletic Board



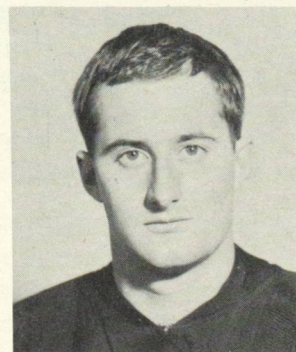
Betty Blight  
Drama Director



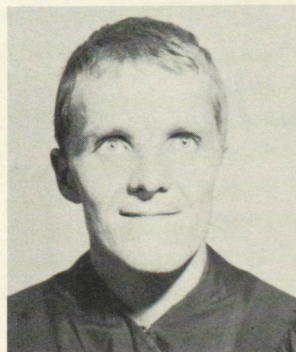
Chuck Schwartz  
Music Director



Jim Harding  
Editor of "The Sheet"



Terry Bowerman  
Advertising Director



Hans Kieferle  
Activities Director



Christine Radcliffe  
Editor of "The Tower"