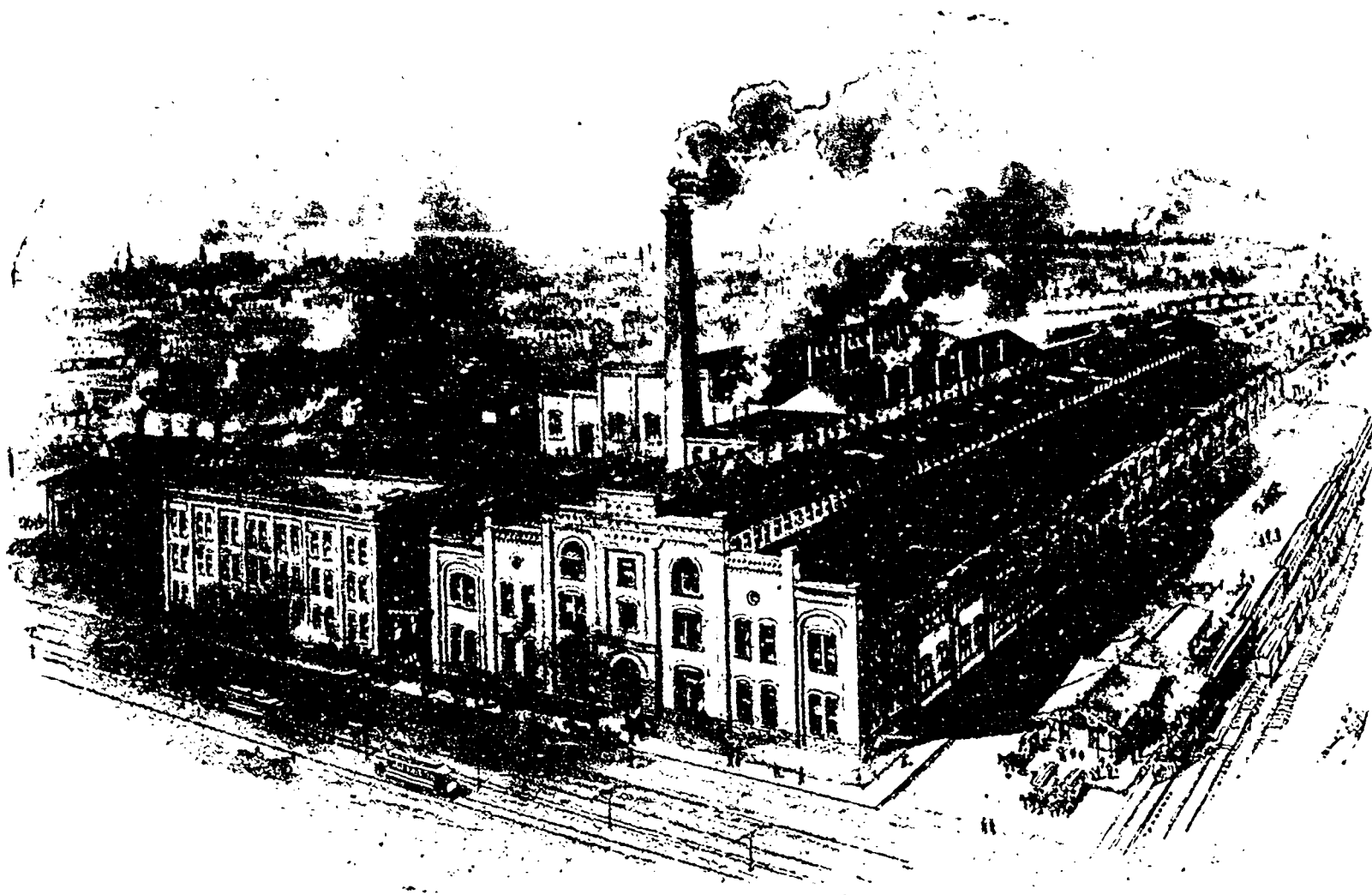


1844

1902

**Band Saw Mills****Circular Saw Mills—**

Stationary and Portable.

**Re-Saws—**

Band and Circular.

**Steam Acting Machinery—**Kickers, Log Rollers, Niggers,  
Jump Saws, Steam Feed and  
Drag Saws.**Shingle Machinery—**

Hand and Power Feed.

**Wood-Working Machinery—**

Full Assortment.

**Pulp Machinery—**Cutting-Off Machines, Barkers,  
Grinders, Screens, Wet Machines,  
Chippers, &c.**Brick Machinery—**

Plastic, Stiff Mud and Dry Press.

**Engines—**The McEwan Automatic, Plain  
and Marine.**Boilers—**Stationary and Portable, Clyde,  
Economic, Marine, Burners, etc.**Link Belting—**Malleable Chain—Steel Chain—  
for all Saw-Mill Work.**Municipal Machinery—**Rock Crushers, Elevators, Screens,  
Steam Road Rollers, 10, 12 and  
15 tons, Steam Fire Engines, etc.

For over 50 years we have been building a reputation for High Class Machinery. Our Mills and Machinery extend, in Canada, from the Pacific to the Atlantic—Newfoundland, Central and South America, New Zealand, Australia, Austria, Roumania and the far east. Our aim is ever to produce the Best, not the Cheapest, with the invariable result that where we receive one order others follow quickly. Our new works, occupied in 1895, gave us the much needed room for expansion, coupled with the most modern facilities for economic production and prompt shipments. We have found it necessary to increase our buildings and add very materially to our already large equipment of tools and employees.

# WATEROUS ENGINE WORKS CO., LIMITED

## BRANTFORD, CANADA.

Branch Offices: Winnipeg and Vancouver.