

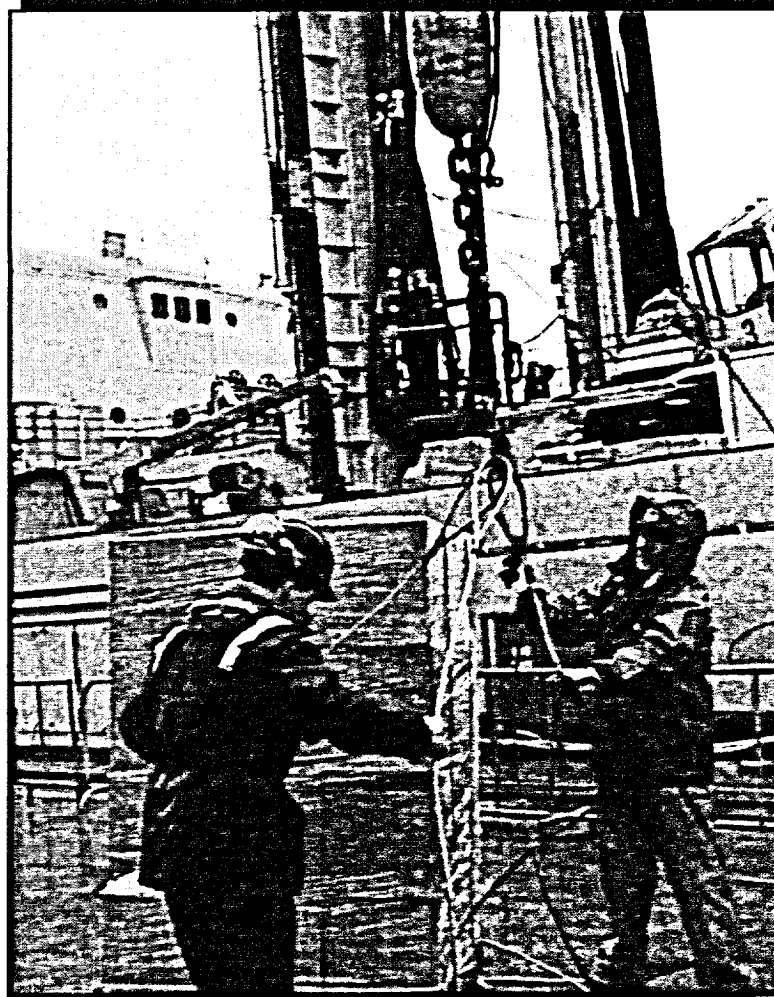
# CONTRIBUTING TO A SAFER AND MORE SECURE WORLD

The *Maritime Forces* will be able to:

- sustain indefinitely the deployment overseas of two ships (one from each coast) with embarked maritime helicopters, or a submarine and a ship, for operations in direct support of the Special Operations Group or as forward elements of the Standing Contingency Task Force anywhere in the world;
- sustain for up to six months a task group of up to four combatant vessels with the capability for a national or multinational command component for operations abroad. This task group will be capable of precision fire and support to forces ashore and will be used as an integral element of the Standing Contingency Task Force or in support of other national objectives; and
- deploy a second task group for up to six months, either as a follow-on force to the Standing Contingency Task Force or as part of a separate Mission-Specific Task Force.

The *Air Forces* will be able to:

- provide assured airlift to support international operations;
- provide a globally deployable special operations aviation capability to the Special Operations Group;
- sustain indefinitely the deployment overseas of two embarked maritime patrol helicopters (one on each coast) and one Aurora maritime patrol aircraft as the forward element of the Standing Contingency Task Force anywhere in the world;
- provide for up to six months an Air Expeditionary Unit as an integral element of the Standing Contingency Task Force. This unit would be comprised of:
  - up to two Aurora maritime patrol aircraft to support land- and sea-based elements,
  - up to six maritime helicopters for deployment with the naval task group, and
  - up to six medium-to heavy-lift helicopters to support land operations;
- sustain indefinitely overseas an Air Expeditionary Unit as an integral element of a deployed Mission-Specific Task Force. This would consist of:
  - up to six medium-to heavy-lift helicopters to support land operations;
  - deploy for up to six months to a prepared base in a secure location an Air Expeditionary Unit as an integral element of a Mission-Specific Task Force. This would consist of:
    - one Airbus configured for air-to-air refueling, and
    - six CF-18 aircraft for air-to-ground missions.



Halifax, Nova Scotia—Civilian employees prepare cargo to be loaded onto HMCS *Preserver*.

