

## TORONTO BUILDING OUTLOOK GOOD.

The coming spring will witness the inception of the largest building year that Toronto has enjoyed for some time. There are a dozen buildings promised for the spring, upon which work will start within two months, and whose aggregate cost will approach \$12,000,000. These include the Union Station, Robert Simpson warehouse, Upper Canada College, Overland Auto factory, St. Andrew's College, Trinity College, Goodyear factory and Imperial Oil building.

When it is taken into consideration that the total permits for 1915 were about \$6,000,000, and that building activities are indicative of financial conditions, everyone should feel optimistic.

## TO REFINER COPPER IN BRITISH COLUMBIA.

The newly appointed Minister of Mines of British Columbia has announced that the Government propose erecting a copper refining plant at an early date in the vicinity of Vancouver to smelt and refine the copper ores. When it is realized that at the present time nearly all the copper produced in the Province is shipped to refineries in New Jersey, it will be seen what a boom this will be to the Province. It is believed that such a refinery could handle the Province's business and ship refined copper direct to the East and to Old Country manufacturing plants.

## PHENOMENAL EARNINGS OF C.P.R.

The report of the net earnings of the Canadian Pacific Railway Company for December showed that in the first six months of its 1915-16 fiscal year net figures were \$20,624,000. Fixed charges, figured on the same basis as the preceding year, would be \$7,646,469, leaving for dividends on common stock \$21,977,708. This is equal to 8 1/2 per cent. on the outstanding issue. On this basis the road in the six months earned the full year's 7 per cent. dividend out of the railway account. These figures are of course only approximate, as they are subject to revision for the special income amount. It is quite evident, however, that the half-year's result was nothing short of spectacular.

## TECHNICAL SOCIETIES.

ALBERTA ASSOCIATION OF ARCHITECTS.—President, Jas. A. Henderson, F.R.I., B.A., Edmonton; Hon. Secretary, W. D. Cromarty, Edmonton.

ARCHITECTURAL INSTITUTE OF BRITISH COLUMBIA.—President, R. Mackay Fripp; Secretary, Fred L. Townley, 325 Homer St., Vancouver, B.C.

CANADIAN CEMENT AND CONCRETE ASSOCIATION.—President, Peter Gillespie, Toronto, Ont.; Secretary-Treasurer, Wm. Snaith, The Thor Iron Works, Toronto, Ont.

CANADIAN CLAY PRODUCTS' MANUFACTURERS' ASSOCIATION.—President, J. E. Frid, Hamilton; Secretary-Treasurer, G. C. Keith, Toronto.

CANADIAN ELECTRICAL ASSOCIATION.—President, Col. D. R. Street, Ottawa, Secretary, Alan Sullivan, Confederation Life Building, Toronto.

CANADIAN FORESTRY ASSOCIATION.—President, William Power, M.P., Secretary, James Lawler, Journal Building, Ottawa.

CANADIAN GAS ASSOCIATION.—President, Arthur Hewitt, General Manager Consumers' Gas Company, Toronto; John Kellor, Secretary-Treasurer, Hamilton, Ont.

CANADIAN INDEPENDENT TELEPHONE ASSOCIATION.—President, W. Doan, M.D., Harrietsville, Ont.; Secretary-Treasurer, Francis Dagger, 21 Richmond street West, Toronto.

CANADIAN INSTITUTE.—198 College Street, Toronto. President, J. B. Tyrrell; Secretary, Mr. J. Patterson.

CANADIAN NATIONAL ASSOCIATION OF BUILDERS' EXCHANGES.—Western Section—President, C. R. Frost, 609 Second St., Edmonton, Alta.; Secretary-Treasurer, A. M. Frith, 224 McDougall Ave., Winnipeg. Eastern Section—President, Geo. Gander, Toronto; Secretary-Treasurer, P. L. Fraser, Builders' Exchange, Toronto.

CANADIAN SOCIETY OF CIVIL ENGINEERS.—President, G. H. Duggan, Montreal; Secretary, Prof. C. H. McLeod, Montreal.

LONDON BUILDERS' EXCHANGE.—President, A. C. Nobbs; Secretary-Treasurer, F. S. Barclay.

MANITOTA ASSOCIATION OF ARCHITECTS.—President, Col. J. B. Mitchell, Winnipeg; Secretary-Treasurer, R. G. Hanford.

MONTREAL BUILDERS' EXCHANGE.—President, John Quinlan; Secretary, D. K. Trotter.

ONTARIO ASSOCIATION OF ARCHITECTS.—President, C. H. Acton Bond, Toronto; Treasurer, J. P. Hynes, Toronto; Secretary, R. L. Wolsey, Toronto.

PROVINCE OF QUEBEC ASSOCIATION OF ARCHITECTS.—President, E. B. Staveley, Quebec; Treasurer, N. MacVicar, Montreal; Secretary, J. Emile Vanier, 5 Beaver Hall Square, Montreal.

QUEBEC BUILDERS' EXCHANGE.—President, J. A. Marier; Secretary-Treasurer, Alf. Cote.

ROYAL ARCHITECTURAL INSTITUTE OF CANADA.—President, H. C. Russell, Winnipeg, Man.; Hon. Secretary, Alcide Chausse, No. 5, Beaver Hall Square, Montreal Que.

SOCIETY OF CHEMICAL INDUSTRY.—Wallace P. Cohoe, Chairman; Alfred Burton, Toronto, Secretary.

TECHNICAL SOCIETY OF PETERBORO.—Bank of Commerce Building, Peterboro. President, N. C. Mills, P.O. Box 995, Peterboro, Ont.

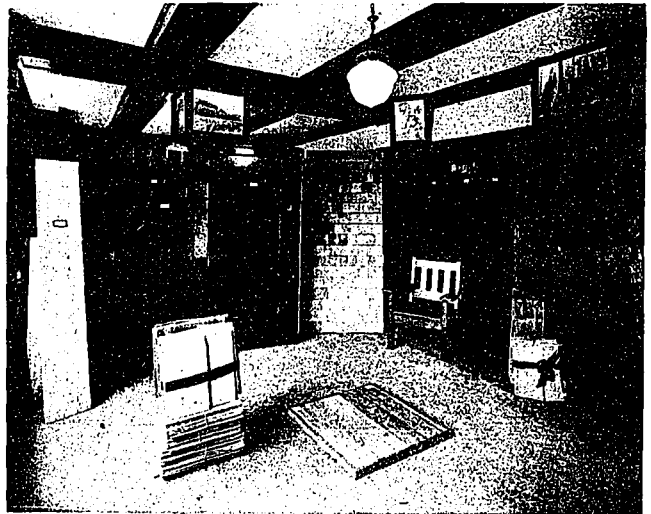
TORONTO BUILDERS' EXCHANGE.—President, S. R. Hughes; Secretary, A. E. Flower.

UNION OF CANADIAN MUNICIPALITIES.—President, T. L. Church, Mayor of Toronto, Ont.; Hon. Secretary-Treasurer, W. D. Lighthall, K.C. Ex-Mayor of Westmount; Asst. Secretary, G. S. Wilson, 402 Coristine Bldg., Montreal.

## BRITISH COLUMBIA FOREST SERVICE.

The British Columbia Government made a wise decision when they decided to bring the Eastern part of Canada into closer touch with the matchless forest products of the Pacific Coast Province.

Along the line of the newly adopted policy of the British Columbia Forest Service, an office has been opened in the Excelsior Life Building, Toronto, managed by L. B. Beale, of the B.C. Forest Service. Here, architects and builders have an opportunity of seeing and studying the excellent effects produced by the use of the superb woods exhibited. An illustration is shown of part of the exhibit, in which the wall panelling comes in for particular attention. This is in Douglas fir, the beautiful effects produced being a revelation to those not already acquainted with the adaptability of this wood for high-class interior decoration. Different finishes are shown, from the natural wood to the highly finished product. Further examples are shown, in the nature of Douglas fir doors; Western red cedar and Douglas fir base trim framing and mouldings; Douglas fir flooring; dimension stock of B.C. spruce, Western hemlock, red cedar and Douglas fir; B.C. red cedar shingles and shingle bolts. This exhibit is attracting much attention, and has already done much towards educating the people in Toronto and Ontario regarding the forest products of British Columbia.



BRITISH COLUMBIA FOREST SERVICE.  
PERMANENT EXHIBIT, EXCELSIOR LIFE BUILDING, TORONTO.

## Additional Service

Along the line of "CONSTRUCTION'S" policy, to be of the greatest possible service to its readers, we have included, starting with the December issue, and will continue to publish the principal items of our Report Service dealing with new construction throughout the Dominion. These news items give the reader a good idea of what is going on in the building field, and from the expression of approval received since its inauguration, we feel that the decision to include it will meet with the hearty approval of all our readers. Another feature adopted with the January issue, and which will be continued, is an Architectural Digest in which other articles of interest, both to the architect, contractor and the engineer, will be published each month. These are taken from our exchanges, and will give our readers a service such as they could only get by taking a large number of similar publications.

It is further intended to improve the value of "CONSTRUCTION" by embodying departments dealing with fire-proofing, heating and ventilating. Arrangements have also been made for a number of special articles to be published during the year dealing with such subjects as lighting, sanitary equipment and power-house features of large modern buildings, as well as articles on the various materials and equipment, being embodied in all structures from houses to skyscrapers.