

NEELYS LIMITED

TORONTO

Government Bonds

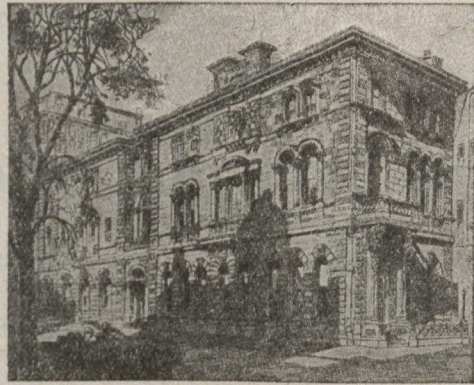
Offices
Temple Building

Telephone
Adelaide 2900

The London Mutual Fire Insurance Company

ESTABLISHED 1859

Assets \$718,608.76
Surplus to Policyholders \$380,895.44



DIRECTORS

A. H. C. CARSON, Toronto.....President
R. HOME SMITH, Toronto.....Vice-President
F. D. WILLIAMS..... Managing Director
A. C. McMASTER, K.C. W. T. KERNAHAN
S. G. M. NESBITT H. N. COWAN
G. H. WILLIAMS

Head Office, 33 Scott St., TORONTO

Why Burden Your Wife?

IF you wish to appoint your wife as executrix or trustee under your will, why not assist her to carry the heavy burden by appointing this Corporation as co-executor?

Your estate will thus have the advantage of the personal direction which she can give, and she will be relieved of the burdensome details necessarily involved in the management of any estate. Also she will receive invaluable assistance in regard to investments.

Our officers will be glad to confer with you in regard to the making of your will or any trust business you may have in mind.

2261

THE STERLING TRUSTS CORPORATION

HERBERT WADDINGTON MANAGING-DIRECTOR
80 KING ST. EAST TELEPHONE TORONTO
M. 2717
REGINA BRANCH · C.H. BRADSHAW Manager

ALFRED WRIGHT
President

ALEX. MACLEAN
Manager & Secretary



Personal Accident Sickness
Employers' Liability Workmen's Compensation
Fidelity Guarantee Elevator Insurance
Teams' Liability Plate Glass
Automobile Insurance

Head Office

Company's Building, 61-65 Adelaide Street East
TORONTO

BRANCHES—Quebec and Maritime Provinces.....MONTREAL
Manitoba and Saskatchewan.....WINNIPEG
British Columbia and Alberta.....VANCOUVER