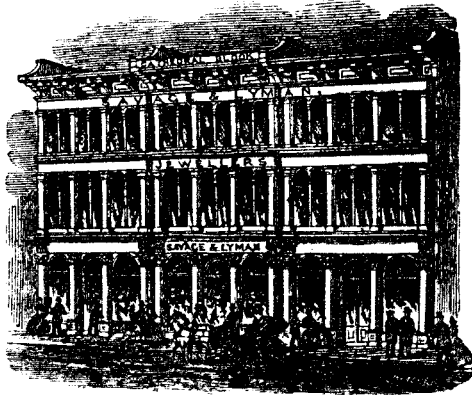


ESTABLISHED 1816.



SAVAGE & LYMAN,

CATHEDRAL BLOCK, NOTRE DAME STREET, MONTREAL

Have always on hand an assortment of

GOLD AND SILVER WATCHES

OF SUPERIOR QUALITY, WARRANTED GOOD TIME KEEPERS;

JEWELLERY

OF THE NEWEST DESIGN, AND IN GREAT VARIETY;

SILVER TEA AND COFFEE SETS,

JUGS, GOBLETS, CUPS, SALVERS, SPOONS, FORKS, LADLES, &c.;

ELECTRO-PLATED TEA AND COFFEE SETS, SPOONS, FORKS, &c.

ALSO,

COMMUNION SETS, in Electro-plate and Britannia Metal; TABLE & POCKET CUTLERY, by the best makers; PAPIER MACHE WARE, in Tables, Work Boxes, Desks, &c.; OPERA AND FIELD GLASSES, TELESCOPES, and SPECTACLES; BAROMETERS, THERMOMETERS, MARBLE and other CLOCKS; FANS, PURSES, LEATHER TRAVELLING BAGS, and a great variety of articles too numerous to mention.

FIRE AND LIFE INSURANCE

ESTABLISHED 1825.

SCOTTISH PROVINCIAL ASSURANCE COMPANY

INCORPORATED BY ACT OF PARLIAMENT.

CAPITAL, - - - ONE MILLION STERLING.

Invested in Canada, \$500,000.

CANADA HEAD OFFICE, MONTREAL.

DIRECTORS:

Honourable JOHN YOUNG, Chairman.

HUGH TAYLOR, Esq., Advocate.

Hon. CHAS. WILSON, M.L.C.

R. D. COLLIS, Esq., Merchant.

WILLIAM SACHE, Esq., Banker.

Secretary,—A. DAVIDSON PARKER.

Life Department.

Attention is directed to the Rate of Premium adopted, which will be found more moderate than that of most other Companies.

Special "Half Premium" Rates.

Policies for the whole of Life issued at Half Rates for the first five years, so adjusted that the policies are not liable to arrears of Premium. Age 25, yearly premium for £100=£1 1s. 9d., or for £500, yearly premium, £5 8s. 9d. at other ages in proportion.

WEST END STOVE WAREHOUSE,

209, MCGILL STREET, MONTREAL.

A LARGE and Varied Stock of House Furnishing Hardware, Stoves, Iron Bedsteads, Tin and Japanned Ware, Table Cutlery, Plated Ware, &c., &c.

R. KERR & CO.