

KELSO & CO.

47 to 57 Oxford Street,
GLASGOW, SCOTLAND,
MANUFACTURING

Opticians, Electricians and
Model Makers.

Inventors' Models carefully made to instructions. Models made to any size or scale.

Speciality: COMPLETE SHIP MODELS.

SHIP MODEL FITTINGS, one-fourth, and one-eighth inch scale, always in stock or progress, as supplied by us to the principal shipbuilders throughout the United Kingdom.

Electric and Pneumatic Ship's Bells and Indicators, as fitted by us to ships of the Royal Navy.

Makers of Dynamo-Metric apparatus for testing the resistance of Ships' Models as supplied to Messrs. Wm. Denny & Bros., and the Italian and Russian Governments.

Contractors to the British, Russian and Italian Governments.

**THE
CANADIAN TRADE REVIEW,**
Montreal, Canada.

Readers in want of commercial information concerning Canada, are invited to communicate with us, we shall be pleased if our foreign readers will make the freest use of our services in this respect.

Firms requiring representatives in this country, we shall endeavor to assist them. we would also remind our readers abroad that if they are in a position to take up agencies for Canadian Manufacturers and will write us, we shall be pleased to put them in communication with Canadian firms, we ask no fee or commission for bringing Traders together, seeking our reward in increasing the usefulness and the prestige of the TRADE REVIEW.

THE CANADIAN TRADE REVIEW,
MONTREAL, CANADA.

McCASKILL, DOUGALL & CO.,

Manufacturers of

**Fine Varnishes and
Japans,**

: : : : MONTREAL.

Quotations Promptly Furnished.

BAYLIS MFG. CO'Y

MANUFACTURERS OF

Varnishes, Japans,

White Lead,

Colored Paints,

Dry Colors, Printing Ink,

Machinery Oils and Axle Grease.

AND DEALERS IN

Painters' & Printers' Materials
Generally.

16 to 28 Nazareth Street,

MONTREAL.

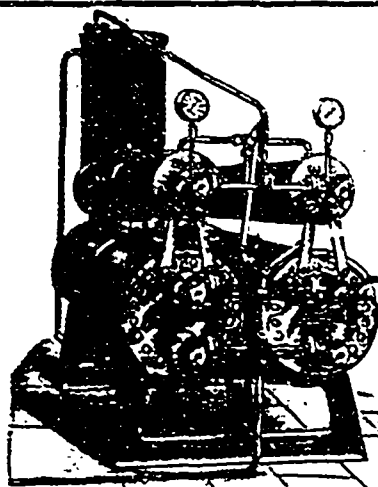
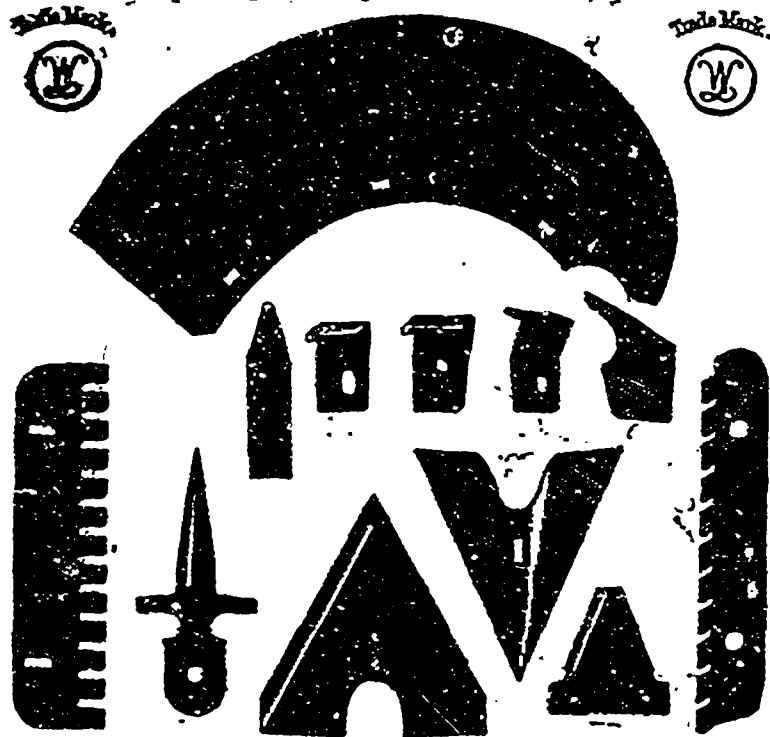
Letters to be addressed "SHEFFIELD. Telegraphic Address "MONTROSE Sheffield."

WILLIAM LEE & SONS,
MANUFACTURERS OF
STEEL, FILES

And Every Description of

**CHAFF, REAPING and MOWING MACHINE
KNIVES & MALLEABLE IRON FOUNDERS.**

MONTROSE WORKS, HARWOOD STREET, SHEFFIELD,
And Spring Foundry, Dronfield, ENGLAND.

**'Simplex'**

No Engine
No Moving Parts
No Skilled Labor
No Engine-Room Stores.
No Noise or Vibration.

Motive Power,
Low Pressure Steam.

ICE and COLD ROOMS.

THE
"SIMPLEX" ABSORPTION MACHINE
(CRACKNELL'S PATENT)

The Tyler and Ellis Mfg. Co., Limited,

20 New Bridge Street, LONDON, ENG,

Works, Peterboro.

Telegraphic Address, "Riceps," London.