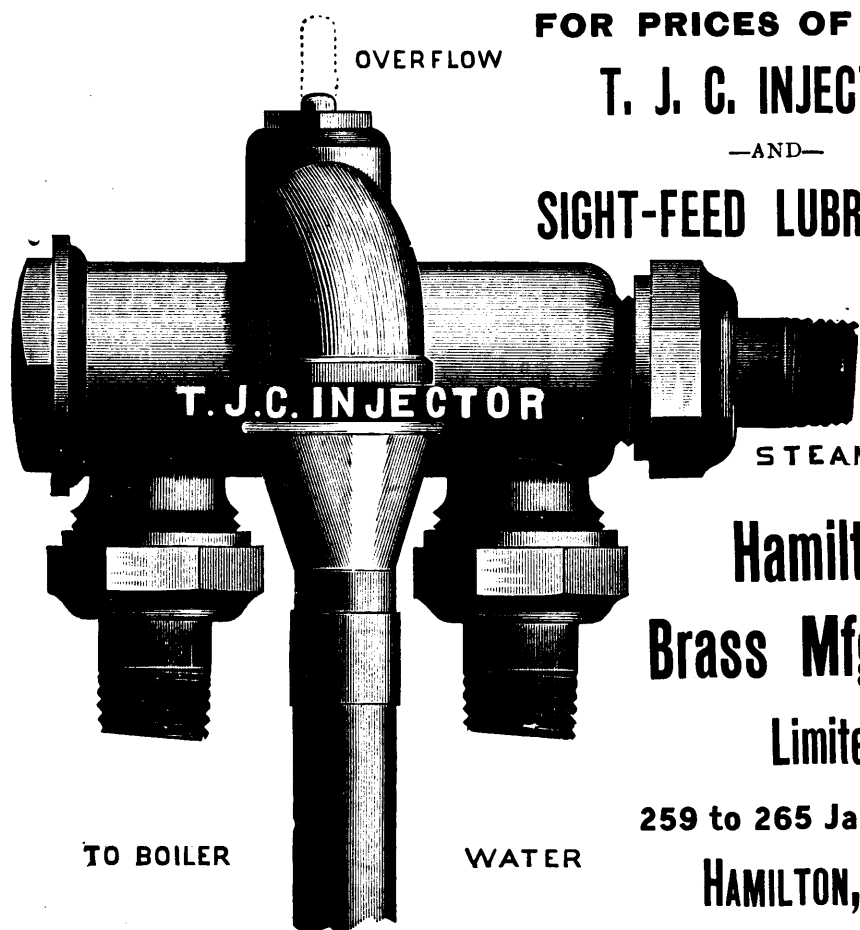


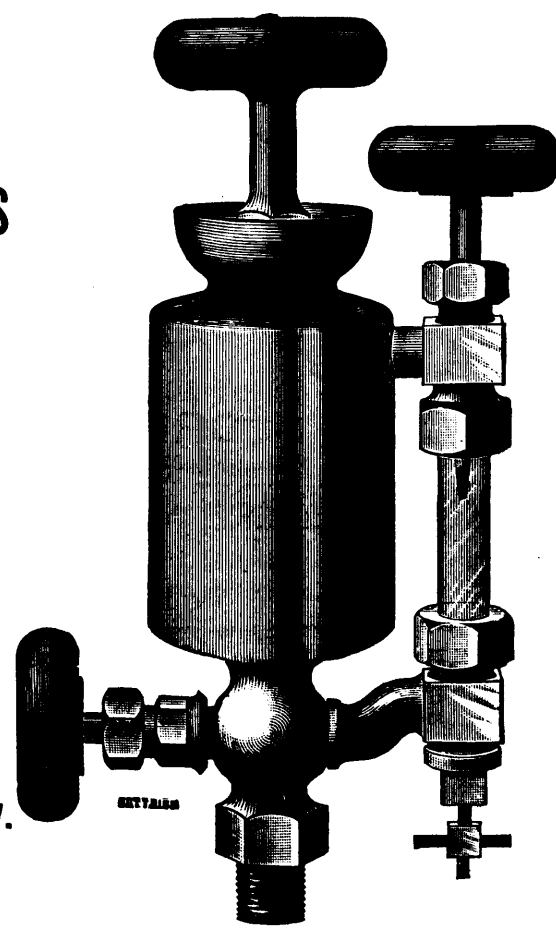
**FOR PRICES OF
T. J. C. INJECTORS
—AND—
SIGHT-FEED LUBRICATORS**



Write
to
the

**Hamilton
Brass Mfg. Co.
Limited**

259 to 265 James St. W.
HAMILTON, ONT.



MACHINERY DEPOT.

A. R. WILLIAMS & CO.

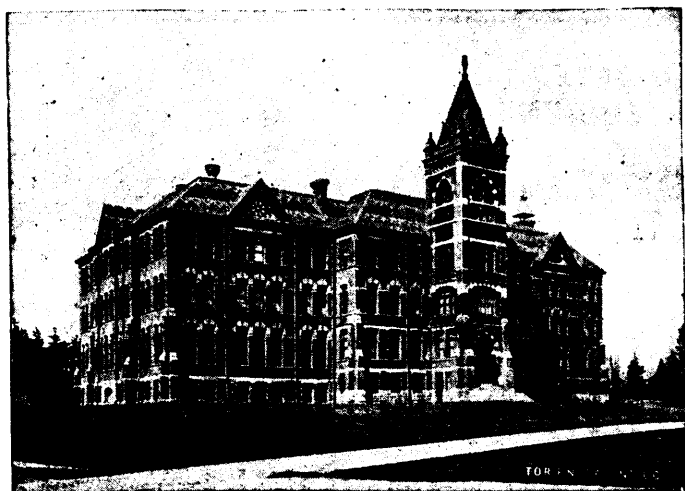
**Write for Quotations on Mining and Quarrying Machinery, Engines, Boilers,
Pumps, Ore Breakers and Machinery Supplies of all Kinds—Immense Stock.**

345-347 St. JAMES STREET, MONTREAL, QUE.

School of Practical Science, Toronto

ESTABLISHED 1878.

AFFILIATED TO THE UNIVERSITY OF TORONTO.



This School is equipped and supported entirely by the Province of Ontario and gives instruction in the following departments:

- 1—CIVIL ENGINEERING
- 2—MINING ENGINEERING
- 3—MECHANICAL & ELECTRICAL ENGINEERING
- 4—ARCHITECTURE
- 5—ANALYTICAL AND APPLIED CHEMISTRY

Special Attention is directed to the Facilities possessed by the School for giving Instruction in Mining Engineering. Practical Instruction is given in Drawing and Surveying, and in the following Laboratories:

- | | | |
|------------|----------------|--------------|
| 1—CHEMICAL | 3—MILLING | 6—ELECTRICAL |
| 2—ASSAYING | 4—STEAM | 7—TESTING |
| | 5—METROLOGICAL | |

The School also has good collections of Minerals, Rocks and Fossils. Special Students will be received as well as those taking regular courses.

FOR FULL INFORMATION SEE CALENDAR.

L. B. STEWART, Secretary.