



Bruce's Giant White Feeding Beet

Leaders at all tests at the Ontario Agricultural College, Guelph, since their introduction.

These grand Feeding Beets introduced by us in 1900 combine the fine rich qualities of the sugar beet with the long keeping large size and heavy cropping qualities of the mangel. The roots are clean and tops small, white flesh, solid, tender and very sweet, and on account of the bigger part of length growing out of the ground they are easily harvested. They will outyield all the other kinds of Sugar Beets and Mangels. The roots are the largest, handsomest, most uniform and cleanest of all Sugar Beets, and this, combined with their great richness and easy harvesting quality makes them the "best ideal" of a root for the farm. To show what a grand root we have and how it is capturing the trade, we give our sales—1900, 43 lbs.; 1902, 1954 lbs.; 1905, 4327 lbs.; 1907, 9800 lbs.; 1908, 15,122 lbs. We offer in two colors, white and rose, each 1 lb. 10c. 1 lb. 15c., 1 lb. 25c., 4 lbs. 90c. Postage extra 5c. lb. to Canada and 16c. lb. to Newfoundland and United States. FREE—Our illustrated 100-page Catalogue of Vegetable, Farm and Flower Seeds, Bulbs, Plants, Implements, Poultry Supplies, etc.—Send for it.

JOHN A. BRUCE & CO. SEED MERCHANTS ESTABLISHED 1858 **Hamilton, Ont.**

No. 1 Wheat Land \$300 per acre

Five year terms to land owners

320 or 640 acre blocks. Choice of location

ALBERTA OR SASKATCHEWAN

MADDEN, Dept. B

428 Traders Bank, Toronto, Can.

Ahead of the Rest As a Sure Hatcher!

There are 40 or 50 different makes of incubators on the market. Enough to stock a museum. Yet the Sure Hatch steadily keeps in the lead—and has for a dozen years. It's because we build the Sure Hatch right and sell it at a lower price than any other dependable machine.

Send today for the Sure Hatch Book that Tells the Inside Facts—FREE

This is the only book that goes to the very bottom of the incubator question. It practically turns all kinds of incubators inside out. Tells what's wrong with scores of machines that are bidding for popular favor on the strength of a "bargain" price. Shows why such machines hatch more trouble than chicks. Puts a crimp in the claims of makers of expensive machines who ask you to pay a fancy price for polish and finish and paint and varnish.

This book takes the Sure Hatch apart and shows its entire mechanism. Explains the correct principle of incubator construction. Proves that these correct ideas are built right into the machine.

A recent addition to the parts which go to make the Sure Hatch the most complete and perfect machine on the market is an Overflow Pipe and Cup. This attachment prevents the possibility of water getting into the lamp or on

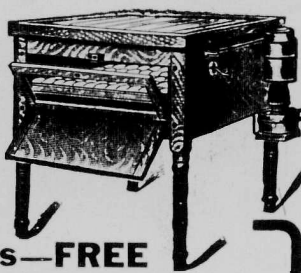
the chimney, or dripping down upon the floor. No other incubator has this feature.

The California Redwood used in the Sure Hatch Incubator gives our machine a more handsome appearance than any that sell for double. But we don't ask you to buy it because of its beauty. Buy it because it does the work better and at less cost than others.

Every Sure Hatch absolutely guaranteed for five years. Sixty days' trial given.

Please send today for the grand FREE Sure Hatch Book. Get the inside facts. Then you can choose from the 40 or 50 different makes a machine that will be a money-maker. You will find the book brimful of valuable information.

SURE HATCH INCUBATOR CO., Box 172, Fremont, Neb., or Dept. 172, Indianapolis, Ind.



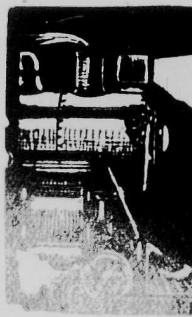
BRITISH COLUMBIA

East Kootenay Irrigable Fruit Lands

We have for sale five acre blocks of lands specially adapted for fruit growing, within twenty minutes walk of the business center of the city of Cranbrook, which can be purchased on easy terms. Also farms of all sizes, and lands suitable for farming. Write us for particulars.

BEALE & ELWELL

CRANBROOK, B.C.



Wanted—Brakemen and Firemen Salary—\$75 to \$150 a month.
We teach and qualify you by mail. Course simple, practical and thorough. After eight or ten weeks study we guarantee to assist in getting you a position on any railway in Canada. The first step is writing for our booklet.

The Dominion Railway School
Dept. C Winnipeg, Manitoba

grain weighs about 42 pounds to the bushel. Neither emmer nor speltz are much grown in this country, for the reason that we have other crops of more value for feeding purposes.

SEARCHING FOR OIL

I would like to know what method is best to employ in searching for coal oil. Also what are the signs of oil in boggy places?

Sask. C. W. B.
Ans.—Coal oil, as such, does not occur in nature, it being a distillation product of petroleum, or crude oil as it is sometimes called, the latter oil, we presume, is the oil to which you refer. Petroleum is a product of decomposition in the rock of both vegetable and animal matter, and only rarely do surface indications occur that point to its being in the rock strata beneath. It happens in some places that the petroleum reaches the surface of the ground and may be detected as a greasy slime upon water, in which cases one would stand a chance of being successful in tapping the rock supply by drilling deep wells. It was in this way that the petroleum deposits in Pennsylvania and Ontario were discovered. There are certain rock formations in which oil is never found, so that before one went to the expense of drilling, he should write to the officer in charge of the Dominion Geological Surveys, Ottawa, and get expert opinion. The

knife well down in the cleft or center fissure of the frog, and push in a piece of absorbent cotton to keep the calomel in and the dirt out. Pare the feet down at the heels if they are too high. Shoe with flat shoes in the summer to give frog pressure, and in winter have the calks as low as is possible.

BACKSETTING

A crop of grain is grown on new breaking. In backsetting the following spring to what depth below the sod should the soil be turned up?

Alta.

"PIONEER."

Ans.—From two to three inches.

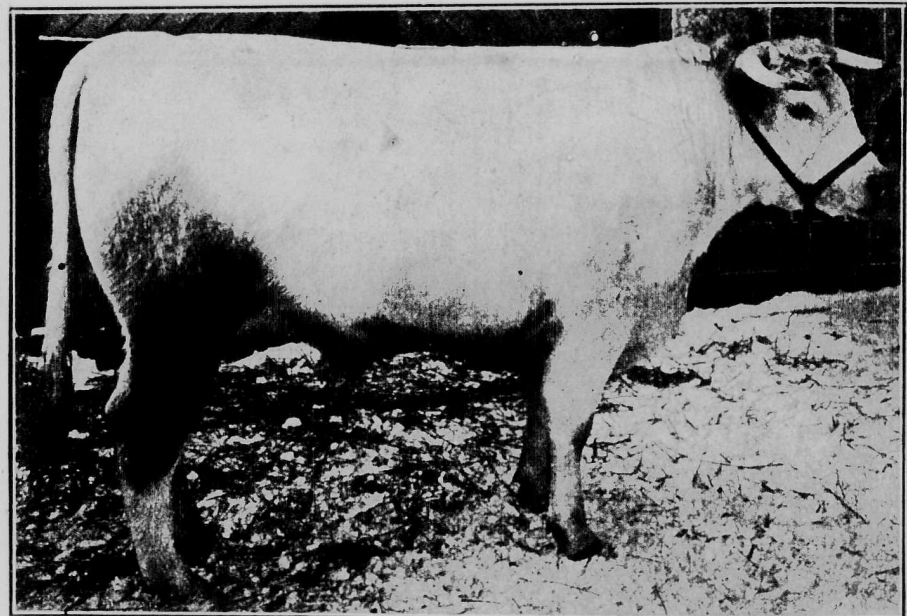
WINTER HERD LAW

Would you be good enough to tell me through the columns of your paper how the winter herd law, if there are any, reads in Alberta and Saskatchewan, in the fall wheat districts?

Sask.

O. G. M.

Ans.—At present, herd law is in force only between the 15th day of May and the 30th of October, inclusive, but if four adjoining townships wish to be constituted a pound district, they may furnish the Department of Agriculture with petitions in the proper form, and so have an arrangement that will take the place of winter "Herd Law." It is probable that in the near future the Province of Saskatchewan will be organized



PURE-BRED SHORTHORN STEER, AGED 2 YEARS AND 2 MONTHS. CHAMPION OF THE BREED, ONTARIO WINTER FAIR, GUELPH.

sign of oil in boggy places would be a greasy slime floating on water.

THRUSH IN HORSE'S FOOT

Can you tell me the cause of thrush in horse's (a gelding) front feet, also a cure for it, if there is one? How does it act on their feet?

Alta.

W. H. C.

Ans.—Thrush is a disease characterized by an excessive secretion of unhealthy matter from the cleft of the frog. The most common cause of thrush is the filthy condition of the stable where the animal is kept. Geldings and stallions are more likely to be affected in the fore feet, because their urine is thrown forward, while in mares the hind feet are affected generally. Too much moisture from any source will produce thrush. Thrush is also a symptom of other foot diseases, particularly navicular disease, as the contracted condition of the hoof interferes with the blood supply to the frog. In some horses there is a constitutional tendency towards this disease. In the treatment of thrush the first thing to bear in mind is cleanliness. The cleft of the frog should be well scrubbed, once or twice a day with soap and water, and all exciting causes removed. Any loose or ragged horn should be removed. Then a poultice of flaxseed meal or boiled turnips sprinkled with carbolic solution may be applied for a day or two. Now put as much calomel as can be held on the point of a pocket

under some form of municipal government, in which event the municipal councils will be given authority within their boundaries to control the running at large of stock.

REPAIRING TO TIN ROOF

Would a heavy coat of hot coal tar, together with an application of sand, stop leaks in a moderately flat tin roof? If the tar and sand application referred to is not useful for this purpose, I shall be glad to know of a better remedy for leaky tin roofs.

Alta.

DAVISBURG.

Ans.—It is impossible to make a very satisfactory job of repairing a leaky tin roof by applying tar and gravel to it. If the roof is not leaking badly, solder up the holes, and give the entire roof a good coat of paint. If there are too many leaks to warrant attempting repair in this way, a new roof will have to be put on. We would not advise tar treatment, but, if you want to try it, mix in a little air-slaked lime with the coal tar to neutralize any organic acids that may be in it, and which would be injurious to the metal. Apply in the ordinary way, sprinkling in a good supply of coarse sand and gravel.

PONY AFFECTED WITH WORMS

I have a pony which is badly infested with worms. We starved him for twenty-four hours and then gave him raw oil and turpentine. We could see that he passed but one

worm. We are advising an ounce of santonin treat him. What would be a safe dose to give? Somewhat for pinworms. To get rid of them, jecton?

Sask.

Ans.—It may not be any more vermifuge turpentine, and oil is not effective in ridding the parasites, although seen in large numbers. The dose of santonin from one-half to two safe vermifuge, particulate to the long, worms. It should be followed by a purgative pinworms, it is always a bitter solution well bowel. As these pass the rear bowels, the brought into immediate them, killing many that have been affected by the mouth alone. 1 ounce, soaked over quarts of cold water, dissolved in a warm water, may be rejection, and repeated days, or plain salt and effectual.

ERADICATING TWIG

Kindly advise me method of cleaning grass.

Man.

Ans.—As soon as possible grain crop is off in the land from two to three inches in depth, and thoroughly to expose as possible to the action. In the spring, plow the again, and harrow it a drag to prevent much as you can. Also sow a smothering crop wheat or millet to weakened plants. shallow in the fall, before winter to expose stocks remaining. If start the eradication out a crop this year, until midsummer and low. Harrow frequently and keep the roots on possible. Keep the soil dry on the surface, and roots from connecting soil. Shallow plowing harrowing during dry best method of fighting

WORMS AND

I have a colt in ration; troubled with worm has lice. Can prescription for each?

Alta.

Ans.—See answers to questions in recent issues.

THYROID GLAND

I have a valuable bull ago I noticed a lump as large as half of a is close to the skin, fastened to the bone. would open it, but what would you advise with it?

Man.

Ans.—The swelling trophied (enlarged) and should not be large bleeding and other may follow. The best this condition is iodine two-dram doses, morning, dissolved in water, or in a bran medicine for ten continue for one week, again for another ten on until the desired completed. External once a day iodine ointment by the druggist. If applications, the part blistering, withhold the irritation subside again.