

MUNICIPAL ENGINEERS, CONTRACTORS AND MATERIALS

WILLIS CHIPMAN

Hon. Grad. McGill University.
M. Can. Soc. C.E. M. Am. Soc. C.E.
Mem. Am. W.W. Ass'n.

**WATERWORKS, SEWERAGE WORKS, GAS
WORKS, ELECTRIC LIGHT AND
POWER PLANTS**
Reports, Surveys, Construction, Valuations
103 BAY STREET - TORONTO

R. E. SPEAKMAN, C.E.

A. M. Inst. C. E., 1878.

CONSULTING ENGINEER

Waterworks, Sewerage and Sewage Disposal.
Municipal Improvements.
Granolithic Pavements.
Electric Light Plants.
Drainage and Irrigation of Land.
Coal Handling Plant and Machinery.
Plans, Specifications and Estimates.
Construction and Valuations.

Canada Life Bldg. - TORONTO

Roderick J. Parke

Am. Can. Soc. C.E., A.M. Amer. Inst. E.E.

CONSULTING ENGINEER

Hydraulic Power Development. Long Distance
Power Transmission. Steam Plants, Electric
Lighting and Power Systems. Tests.
Valuations. Reports.

51-53 James Building, Cor- TORONTO, CANADA
King and Yonge Streets

Office - Long Distance Main 3047

Telephones Residence-Long Distance North 2204

Telegraphic address: "Rodparke."

W. U. Code, Univ. Edition.

WILLIAM H. BREITHAUP, C.E.

M. AM. SOC. C.E., M. CAN. SOC. C.E.

CONSULTING STRUCTURAL ENGINEER

Foundations, Bridges, Buildings.
BERLIN, ONT.

CEMENT TESTING

Dr. J. T. Donald

Official Analyst to the Dominion Government.
Established 1880.

Physical and Chemical Tests on all kinds of
CEMENTS and RAW MATERIALS. Prompt
returns and lowest rates consistent with accurate
work.

112 St. Francois Xavier Street, Montreal, Canada

ROSS & HOLGATE

Consulting and

Supervising Engineers

Waterworks, Electric Light and Power
Plants, Structural Work, Reports,
Estimates, Arbitrations.

30 ST. FRANCOIS XAVIER ST. - MONTREAL

RAILS For Contractors, Switches, Gir-
ders, &c.
LOCOMOTIVES CARS New and Second Hand.

John J. Gartshore

83 Front St. West,

Opposite Queen's Hotel.) TORONTO.

FIREMEN'S LADDERS

—AND—

LADDER TRUCKS

We make the lightest, quickest,
strongest and cheapest. Every Town
and Village needs them and can afford
them. They will save 50 times their
price in insurance premiums. Write
for circulars and quotations.

THE WAGGONER LADDER CO., Limited
LONDON - - - ONT.

John H. Jackson

CIVIL ENGINEER

WATER POWER, ELECTRIC RAIL-
WAYS, STRUCTURAL STEEL.

Niagara Falls, Canada

Associated with Charles H. Mitchell,
C. E., Hydraulic Engineer.

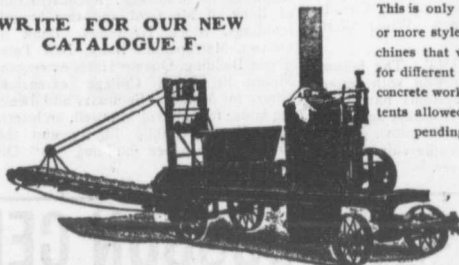
CHARLES BRANDEIS

Consulting Electrical and Mechani-
cal Engineer.

Electric Lighting, Power and Railway
Plants.
Liverpool, London and Globe Building,
MONTREAL.
Long Distance Telephone Main 3256.

The Greatest Concrete Mixer Yet Made

WRITE FOR OUR NEW
CATALOGUE F.



This is only one of 30
or more styles of ma-
chines that we make
for different kinds of
concrete work. 10 pa-
tents allowed, others
pending

**NUMBER OF
PATENTS**

35,664
672,934
675,035
675,036
675,037
698,182
698,910
699,667
699,668
701,512

Also
Mortar and
Asphalt Mixers

DRAKE STANDARD MACHINE WORKS

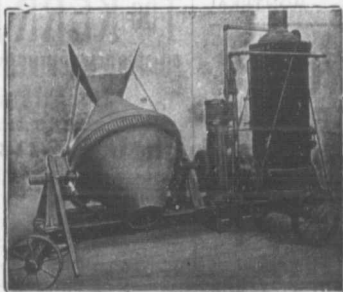
Factory,
7-9-11-13 Garden Street, Chicago.

Office and Salesroom, 298-300-302 W. Jackson Boul.
CHICAGO, ILL., U. S. A.

**SMITH
CONICAL
CONCRETE
MIXER**

18

Different
Sizes and
Styles.



Mixes in Batches. Discharges by Tilting while
Running. Mounted on Skids or Trucks.

Catalogue on Application.

— SOLE CANADIAN AGENTS —

**W. H. C. Mussen & Co., 763 Craig St.,
MONTREAL**

**CANADIAN
CONTRACTOR'S
HAND-BOOK
and
Estimator**

Third Edition

Price \$1.50; to
subscribers of
the Canadian
Architect and
Builder, \$1.00.

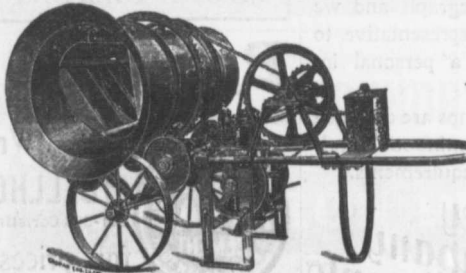
SEND FOR A COPY

C. H. Mortimer
Publishing Co.
Toronto.

Please mention THE CONTRACT RECORD when corresponding with advertisers.

THE McKELVEY CONCRETE MIXERS

MANUFACTURED BY **W. A. McKELVEY,** McKinnon Building,
TORONTO.



These machines
are made to mix
either continu-
ously or in
batches, and can
be operated
either by Hand,
Steam or Gas-
oline Power.