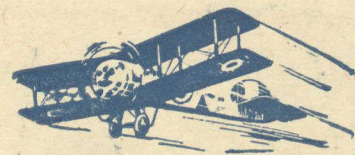


## DISASTROUS FOREST FIRES



Have demonstrated the necessity of limit-owners and protective associations increasing their available supply of fire-fighting apparatus and introducing more efficient methods of operation.

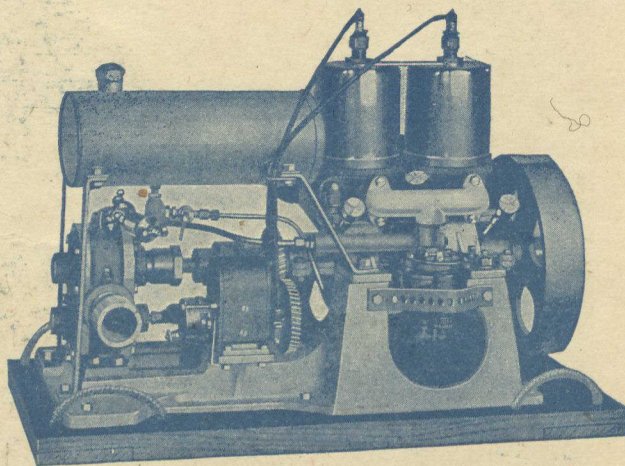
### FAIRBANKS-MORSE FOREST FIRE PUMPS

have been used with good results by many Companies and Associations—their extreme portability in Aeroplane, Canoe, Boat, Car, or by two men over a trail, fitting them particularly for this class of work, where rapid movement from place to place is essential.

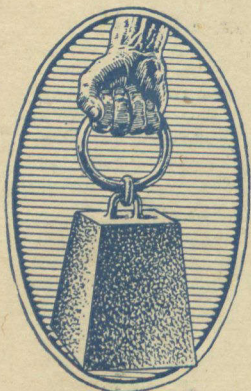
Aeroplanes with any reasonable carrying capacity can transport several FAIRBANKS-MORSE FOREST FIRE PUMPS together with crews to operate them, with the least possible loss of time.

Fore-sighted Forestry Executives are profitting by recent experiences to largely augment their emergency supply of Fire Pumps.

Fairbanks-Morse Forest Fire Pumps are effective anywhere within reach of a lake or stream, and provide a means whereby one or two men can put out the fires when they start.



Fairbanks-Morse Forest Fire Pump.  
A Rotary Pump with 4-5 H.P. Engine. Total weight 128lbs



# The CANADIAN FAIRBANKS-MORSE Co. LIMITED

St. John	Quebec	Montreal	Ottawa	Toronto
Hamilton	Windsor	Winnipeg	Regina	
Saskatoon	Calgary	Vancouver	Victoria	