

Miners Wanted

TO CHEW

PAY ROLL

Plug Tobacco

WANTED.

At the several collieries of the Dominion coal co. Limited, skilled coal miners and mine laborers.

Apply on the works Or by letter

Dominion Coal Company, Ltd

Genuine Garlock Packings

FOR ALL PURPOSES.

Pipe and Boiler Coverings, ENGINEERS SUPPLIES.

also

"Tauril" High Pressure Jointing the Best Sheet Packing yet Produced.

THE GARLOCK PACKING CO.
HAMILTON, ONTARIO.

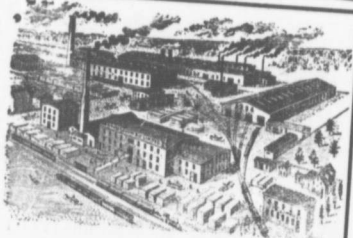
Used by Collieries in Lancashire, Staffordshire & Yorkshire

'XTERRA' COLLIERY LAMP OIL.

For Marsaut, Muesle Deflector or Chard Lamp

PURE WHITE FLAME LOW PRICE
E. WOLASTON, Tutter St MANCHESTER

Sole Representatives for Canada, AUSTEN BROS., Halifax, N. S.



RAILWAY STREET and MINING

-MANUFACTURERS OF-

CARS,

CAR WHEELS FORGINGS & CASTINGS

Church Pews, Fittings for Stores, Schools, & A SPECIALTY.

Large Stocks of Foreign and Domestic Lumber on Sale.
Rhodes, BUILDING MATERIALS GENERAL
Curry & Co., Ltd.
Branch ROBBIE STREET, HALIFAX, N. S. AMHERST, N. S.

INTERCOLONIAL RAILWAY

On and after MONDAY, April 10 1907 trains run daily, (Sunday excepted,) as follows:-

-TRAINS LEAVE STELLARTON-

No 144 Mixed for Trenton	5 55
No 79 Mixed for Hopewell	6 30
18 Express for Halifax and St. John	6 55
21 Mixed for Pictou Landing	7 40
62 Mixed for Pictou	7 40
55 Mixed for Mulgrave	7 45
19 Express for Sydney	8 30
26 Mixed for Pictou	11 10
56 Mixed for Truro	11 15
129 Mixed for New Glasgow	12 55
20 Express for Halifax and Montreal	12 40
101 Mixed for Pictou	12 45
23 Mixed for Pictou Landing	12 55
35 Express for the Sydney	16 50
33 Express for New Glasgow	17 05
32 Mixed for New Glasgow	18 10
38 Express for Halifax and St. John	19 50
17 Express for New Glasgow	20 50
66 Express for Pictou	21 35
	21 40

-TRAINS ARRIVE AT STELLARTON-

79 Mixed from Hopewell	5 30
61 Express from Trenton	5 55
19 Express from New Glasgow	7 30
21 Mixed from Hopewell	7 35
55 Mixed from Truro	7 35
100 Mixed from Pictou Landing	8 00
26 Mixed from New Glasgow	9 30
27 Mixed from Pictou	10 55
56 Mixed from Mulgrave	10 55
19 Express from Halifax and St. John	12 35
129 Mixed from Pictou	11 00
20 Express from Sydney	12 30
35 Express from Halifax and St. John	15 30
33 Express from Pictou Landing	17 00
32 Mixed from Hopewell	18 10
66 Mixed from Pictou	18 45
38 Express from the Sydney	19 35
66 Express from New Glasgow	20 55
17 Express from St. John and Halifax	21 35

All trains are run by Atlantic Standard time Twenty four O'clock is mid-night. Moncton, N. B. April 6th, 1907
Par or Cars between Halifax and Sydney. Dining Car on No. 31 train between Halifax and Mulgrave, on No. 32 train between Mulgrave and South River, on No. 19 train between South River and Mulgrave. On 31 train between Mulgrave and Halifax.