

A New Manitoba Industry.

Very few people throughout Manitoba are aware that within seventy-five miles of the city of Winnipeg there is a large area of thickly wooded country, much of the timber being well

showing samples of extra quality of red, pink, buff and white building brick and a splendid sample of vitrified brick such as a number of the large cities are now successfully using for the pavement of streets which it is necessary to protect from heavy traffic. Sewer pipe, glazed and unglazed,

mentioned they have acquired a considerable number of very valuable mineral claims, ores from some of which have been assayed, and found to be rich in gold, silver, copper, etc., while two of these claims contain large deposits of corundum, better known as emery.

The Canadian Pacific Railway recognizing the importance of this enterprise some time ago sent engineers and bush men to examine into the resources of the Lac du Bonnet region, with the result that they are now constructing a branch line from a point near Molson direct to the new brick works. This line will be completed and ready for traffic early next spring, which will put the district directly in touch with Winnipeg. A small steamer is to be put on Lac du Bonnet next summer, which will enable visitors to readily visit any part of the company's property or other parts of the district. The Dominion government have made a reserve of these waters from commercial fishing thereby protecting them for the enjoyment of sportsmen and the public generally. Lands have also been set aside in this locality for a provincial park, so that this charming district with its rivers teeming with fish, its sand beaches and beautiful wooded shores should soon become an attractive summer resort for Winnipeggers and excursions will no doubt in time be run to it from all parts of Manitoba. Activity and the hum of numerous industries created by man will soon take the place of the former occupants of this secluded spot, the moose, caribou, beaver, silver fox, etc.

The Lac du Bonnet Co. is a home company which instead of looking for far away fields to explore and develop have delved right into the riches at their own doorway and are opening up through their enterprise a part of the province that was practically until now unknown, but which is bound to become one of Manitoba's richest possessions once it is opened by



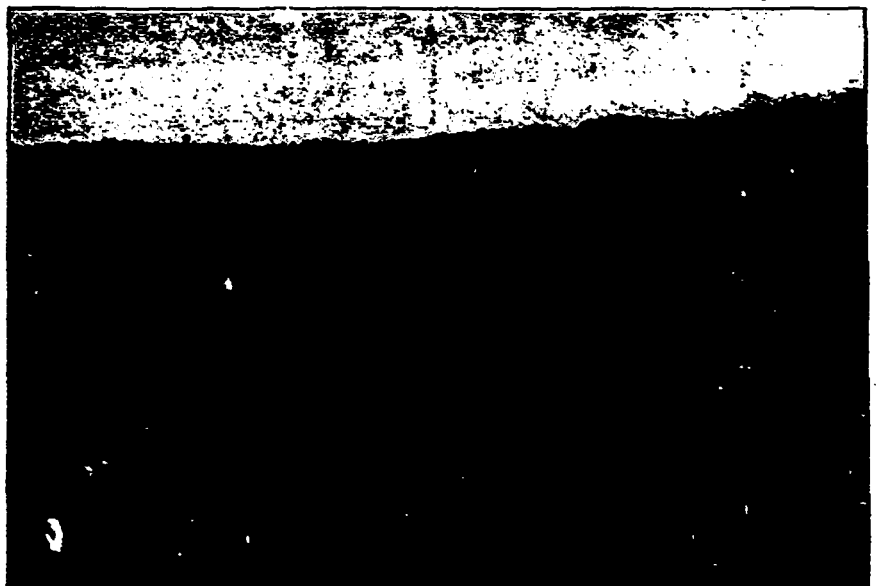
PORTION OF DRYING GROUND AND KILN SHED, LAC DU BONNET CO.

suited to make good quality of marketable lumber, also large groves of very fine poplar suitable for the manufacture of paper pulp which is so much in demand at present all over America, as well as an unlimited supply of fuel and when cleared the land being equal to the finest prairie. However, such is the case in the Lac du Bonnet district which lies in the northeast of the province of Manitoba, along the Winnipeg river from where the White-mouth river empties its waters into the mingled waters of the Winnipeg and English rivers and from there down to Fort Alexander.

A number of Winnipeg gentlemen have formed a company known as the Lac du Bonnet Mining, Developing and Manufacturing Co., Ltd., to operate in this district, and are starting brick works on a very large scale. Having secured an immense deposit of the finest clay suitable for the manufacture of dry, pressed and vitrified brick, terra cotta, sewer pipe, drain tile and like material they immediately sent men to cut the timber and clear and prepare sufficient land to erect such buildings as they would require. Suitable buildings were put on for the accommodation of men and horses, a sawmill was built to cut the lumber for the main buildings, dry sheds, engine and other necessary houses. In the meantime the company sent orders to Eastern Canada and the United States for such machinery as would be required for a first-class dry pressed brick plant and on its arrival at Whitemouth, a station on the C. P. R., a dozen or more teams were engaged to haul it through the woods a distance of about twenty-five miles to the buildings being constructed for it. The task was not an easy one as the company had most of the road to cut out and it was, of course, not in the best of condition, but eventually all the machinery was safely landed and put in running order, and men of experience in the working of clay were engaged, with the result that the company are now

and draw tile are also shown and a variety of small articles.

This industry is not confined to the manufacture of clay products alone. In addition to the clay lands, the company have secured large wood and timber limits in close proximity to their saw mill and brick plant and as these latter are situated on the banks of the Winnipeg river with a fine sheltered harbor free from current and wind, saw logs can be safely



EMERY BAY, LAC DU BONNET.

boomed at the mill until such time as they can be cut into lumber. The company have also secured a valuable water power at the outlet of Lac du Bonnet and contemplate developing and making use of it. It may also be noted that in close proximity to the Lac du Bonnet Co.'s lands already

railway to the Winnipeg river or Lac du Bonnet.

The Lac du Bonnet company have contracted for thirty-five hundred cords of wood, to be delivered in their yard before the 10th of April next for their use in making brick, etc. They have also contracted for the cutting