

A  
VALVE  
YOU  
CAN  
RELY  
ON  
  
SEND  
FOR  
PRICES

## CROSBY STEAM APPLIANCES EXCEL

Steam Engine Indicators.  
Recording Gages.  
Revolution Counters.  
Pressure and Vacuum Gages.  
Lubricators, etc.

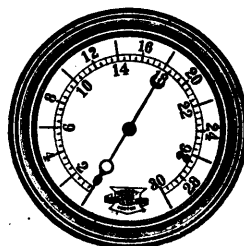


Stationary and Marine Valves.  
Water Relief Valves.  
Blow-off Valves.  
Globe and Angle Valves  
Single Bell Chime Whistles.  
SEND FOR CATALOGUE

**CROSBY STEAM GAGE and VALVE CO.**

BOSTON, NEW YORK, CHICAGO, LONDON

A TRUTHFUL GAGE  
IS THE  
ONLY GOOD GAGE



The village of Shawinigan Falls, Que., will apply for incorporation as a town, and to obtain power to exempt from municipal taxation all joint stock companies established, or about to be established in the town.

The Dominion Government has awarded to T. D. Conway, the contract for building 75 miles of telegraph line near Alberni, B.C., at the price of \$6,400.

The Gress Falls Co., Three Rivers, Que., has applied for incorporation with a capital of \$500,000. The provisional directors include Warren Curtis, New York City; F. P. Farmer, Three Rivers, Que.; and L. H. Davidson, Montreal.

The T. W. Hand Firework Co., Hamilton, Ont., has been incorporated with a capital of \$85,000, to manufacture fireworks, etc. The provisional directors include T. W. Hand and T. W. Lissaman, both of Hamilton.

The Canadian Manufacturers' Association has applied for incorporation.

The water power and saw mills of the Canada Lumber Co., Carleton Place, Ont., have been purchased by Messrs. H. Brown & Sons, who will develop the water power.

The Cape Breton Electric Railway, Sydney, N.S., will erect a new power house 100x61 feet, and a car barn 160x80. One thousand h.p. in engines will be installed.

The Robb Engineering Co., Amherst, N.S., has received an order from the Intercolonial Railway for four 100 h.p. Mumford boilers for the new round houses at Stellarton and Sydney N.S.

Annapolis, N.S., will raise \$12,000 for the purpose of extending the local electric light plant, and operating it by water power.

Messrs. F. G. Rumball, T. H. Purdon and T. C. Knott are applying for incorporation as the London Railway Co., London, Ont., to build an electric road from Ingersoll to London.

The Zanzibar Paint Co., Toronto, has been incorporated with a capital of \$100,000, to manufacture paints, oils, varnishes, etc. The provisional directors include P. D. Richardson and R. S. Flint, both of Toronto; and W. A. Fleming, Montreal.

P. W. Ellis & Co. have been incorporated with a capital of \$750,000 to manufacture watches, clocks, etc. The provisional directors include P. W. Ellis, M. C. Ellis and R. Y. Ellis, all of Toronto.

The Toronto & Hamilton Electric Railway Co., will apply for incorporation to build a railway from Toronto to Hamilton, Ont.

**SOME HAVE LEARNED THAT IT IS  
DANGEROUS TO SIMPLY ORDER**



**"A Wood Split Pulley"**

And are particular to specify

**"DODGE"**

when ordering, so as to get the  
best at same cost as other makes.

**It's as well to have THE BEST**  
when you are buying.

Remember **"Dodge"**  
THE

80% of the Buyers do.

Do You?

**260-PAGE CATALOGUE MAILED FREE.**

**DODGE MANUFACTURING CO., Toronto, Ont.**

When writing to Advertisers kindly mention THE CANADIAN MANUFACTURER.