

# THE DOMINION LEATHER BOARD CO., MONTREAL

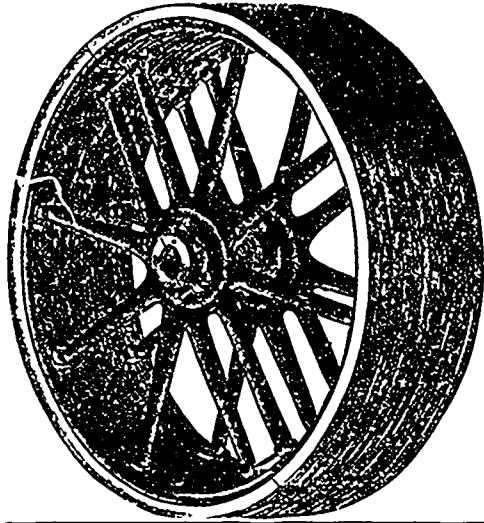
MANUFACTURERS OF

LEATHER BOARD AND STIFFENERS

ASBESTOS MILL BOARD AND FRICTION PULLEY BOARD

PROPRIETORS OF SAULT AU RECOLLET PAPER MILLS

ROOFING, SHEATHING AND FLOORING FELTS



## PULLEYS, PULLEYS

WE build Special Pulleys of any diameter or face, either Split or Solid, with Wood or Iron Arms. Capacity 200 Pulleys per day.

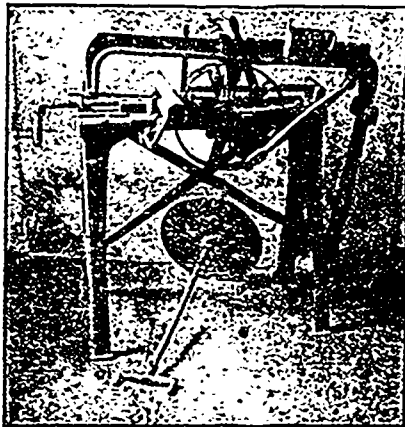
SEND FOR CATALOGUE

### Dodge Wood Split Pulley Co.

Office: 68 King St. West, TORONTO

**JOHN A. BURNS, B.A., Sc.**  
MECHANICAL ENGINEER & MANUFACTURERS' AGENT

**Power Hack Saw** . . . Cuts off any shape or size of metal up to 4 1/2 inches. This is the most practical machine ever offered to the trade. No skill required to run it. When the bar is cut off the machine automatically lifts the saw from the work and stops.  
Write for photograph and price



**MOTORS** Sole Agent for the Kay Electric Works, of Hamilton, Ont.

**ENGINES** Sole Agent for the "Armington & Sims" and "Brown" Engines, of Hamilton, Ont.

**SPECIALIST** in making Boiler Evaporative and Engine Economy Tests Indicating and properly setting the Valves of Steam Engines

Office, - - 686 Craig St., Montreal.

## THE KERR MOTOR



Adapted for driving all kinds of light machinery. It generates more power from less water than any hydraulic agent known. No valves, no dead centres, and will not freeze up, being free from water when at rest. Where ever tested it has shown highest efficiency. Made in various sizes from 1/4 to 20 horse-power.

Send for particulars to

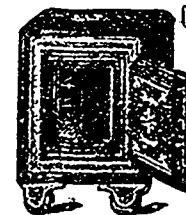
**Kerr Water Motor Co.**  
NIAGARA FALLS, Ont.

**TINGLEY & STEWART MFG. CO.**  
Manufacturers of  
**Rubber and Metal Stamps**  
of every description  
**Steel Stamps and Stencils**  
10 King St. W., TORONTO, ONT.

**A. DeBLOIS,**  
Pattern and Model Maker  
Turning, Sawing, Carving, Moulding,  
and all kinds of wood work.  
Cast Iron Railing for Building, and Ornamental  
Casting a speciality.  
No. 171 Nazareth Street, Montreal.  
Corner of Ottawa Street.

ONTARIO FOUNDRY  
**J. KING & SON**  
PETERBOROUGH

House Castings of every description  
Balcony and Cemetery Railing  
Cresting, Flower Vases, and all kinds of  
Brass and Iron Castings



**Champion Fire & Burglar Proof SAFES.**

These Safes are in use in all parts of the Dominion. They have always proven a sure protection against both Fire and Burglars. Be sure and get prices before buying.

S. S. KIMBALL, M'FR.  
577 Craig St., Montreal.

IVAN BUSHONG, Vancouver, Agent for B.C.

**Beaver Oil Co.**  
Manufacturers . . .  
590 St. Paul Street  
. . . Montreal

**ALEX. WOODS,** General Agent  
Sun Life Ass. Bldg., MONTREAL

Agent for the  
**JULIEN SYSTEM ELECTRIC STORAGE BATTERY**  
Brussels.

Estimates given on application. Street Railway a speciality. Correspondence solicited.

Largest Manufacturers of Steel and Brass Stamps in Canada

**PRITCHARD & ANDREWS**  
Ottawa, Ont.

**RUBBER STAMPS, STENCILS, SEALS, ETC.**  
ALUMINUM, BRASS AND COPPER CHECKS  
for Companies, etc., in place of money  
Send for prices

**A. LEOFRED**

Graduate of Laval and McGill . . . **Mining Engineer**  
Head Office . . . QUEBEC

Branch Offices. -17 Place d'Armes Hill, Montreal,  
and at Sherbrooke, Que.

Mines and Mineral Products

**THE CANADIAN OFFICE & SCHOOL FURNITURE CO.**

**PRESTON, ONT.**





FINE OFFICE, SCHOOL,  
BANK, OFFICE, CHURCH & LODGE FURNITURE  
COURT HOUSE & DRUG STORE FITTINGS

SEND FOR CATALOGUE.