

Engagement AND WEDDING RINGS.

There is no purchase in your entire life that demands the discriminating care and thoughtfulness that should be given the selection of the engagement ring.

Our stock is well assorted to suit every taste and purse with a great variety of beautiful designs for you to select from.

The Wedding Ring.

The sentiment represented by the Wedding Ring suggests the wisdom of careful selection. Our stock of Wedding Rings in 9k, 15k and 18k gold includes a complete range of sizes, styles and widths. All of them our own make and absolutely guaranteed perfect.

T. J. DULEY & Co., Ltd.,
The Reliable Jewellers and Opticians.

Published by Authority.

Upon the recommendation of the Food Control Board, and under the provisions of the Food Control Act, 1917, and the War Measures Act, 1914-1916, His Excellency the Governor in Council has been pleased to approve the following Regulations regarding the sale of Sugar:

1. The wholesale price of sugar when sold by the importer shall not exceed Twenty-seven and one-quarter cents per pound, when it is a cash transaction.
2. When sugar is sold by Jobbers, the price shall not be in excess of Twenty-eight and one-quarter cents per pound, when it is a cash transaction.
3. For the purpose of this Regulation, Twenty-five barrels or over shall constitute and be deemed a wholesale transaction, and must be taken delivery of at one time. Any less quantity than the above, sold in original package, shall constitute a jobbing transaction. A barrel shall be held to contain not less than three hundred pounds.
4. From and after this date the retail price of white granulated sugar within the Municipal limits of the Town of St. John's shall not exceed thirty cents per pound, and in the outports thirty cents per pound, plus transportation, insurance and other regular charges.
5. Any person who shall offer for sale, or shall sell any sugar at a greater price than that fixed in above Regulations, shall be guilty of a breach thereof.
6. All foregoing prices are for cash sales.
7. No dealer shall refuse a tender of cash when a purchase is made.
8. Any person violating any of the provisions of these Regulations shall be guilty of an offence and liable upon summary conviction before a Magistrate or Justice of the Peace to a penalty not exceeding one thousand dollars, or to imprisonment for a period not exceeding three months, or to both fine and imprisonment. (One half of the fine shall be paid to the informer and the balance to the Food Control Board, for the benefit of the Dominion).
9. No Sugar shall be imported into Newfoundland unless a permit to do so shall have been obtained beforehand from the Food Control Board.
10. These Regulations shall be, and come into effect on the First day of June, 1920.
11. The Regulations respecting Sugar, Flour and Molasses, published in the Royal Gazette on the eight of October, 1918, are hereby cancelled.

E. A. SQUIRES,
Colonial Secretary,
Dept. of the Colonial Secretary,
June 15, 1920. jne17,20

WE BUY AND SELL EVERY STOCK LISTED IN NEW YORK.

We specialize in good oils, coppers and active industrials.

Outright purchase or on conservative margin.

Daily quotations free to all investors.

J. J. LACEY & COMPANY LIMITED,
CITY CHAMBERS,
Correspondents: E. M. Fuller & Co., New York City.

Marabou Neckwear!

A Splendid Assortment of

Marabou Capes,

In the Latest Shapes and Trimmings. These are light, dressy and give ample protection against the cold easterly winds. Prices range from **\$13.00 to \$30.00.**

ROBERT TEMPLETON.

SILVERWARE!

Bread Trays
Roll Trays
Fruit or Confection Basket
Baking Dish
Casserole
Entree Dishes
Soup Tureen
Cake Dishes
Cake Plates.

Bread Board
Bon Bon
Butter Dish
Sandwich Trays
Dessert Sets
Trivets
Waiters
Marmalade
Sugar Dish
Spoon Holder
Tea Sets

Also HOMES & EDWARDS' FLATWARE.
"The name of Homes & Edwards is a sure guarantee of "Quality".

D. A. McRAE, Jeweller.

jne10,20

**Pianos, Players,
Organs, Gramophones, etc.**

Charles Hutton

Reliable Headquarters
for everything Musical.

N.B.—Outport Orders attended to personally by Charles Hutton.

FRUITS, in tins.

STRAWBERRIES.
RASPBERRIES.
APRICOTS—Extra.
SLICED PEACHES.
PEARS—Extra.
SLICED PINEAPPLE.
PINEAPPLE CUBES.

CHERRIES, White, Red, Black

CUSTARD POWDER.
Bird's,
Freeman's,
Holbrook's.

JELLIES.
Pure Gold,
Freeman's,
Guava,
Easy Jell,
Surprise.

BOWRING Bros., Limited,
GROCERY.

Reid-Newfoundland Company.

S.S. "SAGONA."

South West Coast Service.

Passengers leaving St. John's at 8.45 a.m. To-Morrow, Saturday, will connect with S.S. "SAGONA" at Placentia, for usual ports of call between Placentia and Port aux Basques.

Reid-Newfoundland Company.



Libby's New York State Solid Pack TOMATOES.

Put up in Tins 2's and 2 1-2's.
AT ALL GROCERS.

Libby, McNeill & Libby.

mar18,17

SLATTERY'S

Wholesale Dry Goods

are now offering to the trade the following

English and American Dry Goods.

English Curtain Net.	White Curtains.
English Art Muslin.	Valance Net.
White Nainsook.	White Seersucker.
Children's White Dresses.	Children's Gingham Dresses.
Misses' Colored Dresses.	Ladies' Handkerchiefs.
Gent's White Handkerchiefs.	Gent's Colored Handkerchiefs.

Also a very large assortment of SMALLWARES.

SLATTERY'S DRY GOODS STORE,

Duckworth and George Streets.

New Summer Dresses

See our great display of Lades', Misses' and Children's New Muslin and Print Summer Dresses.

A complete variety of dainty colors and very newest styles to select from.

WILLIAM FREW, Water St

Cleaned CURRANTS!

NEW CROP.

Just Arrived One Pound Cartons.

For Lowest Price

W. A. MUNN,

Board of Trade Building,

Advertise in the Evening Telegram

Immediate Delivery!

Protect your spring trade by placing your order at once for the following popular goods:

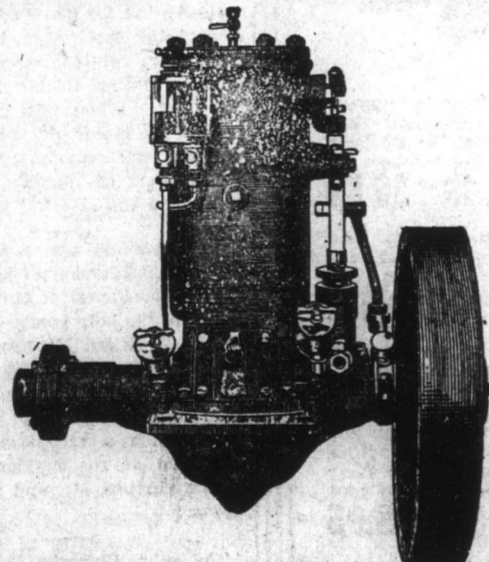
- MEN'S SERGE SUITS—Asstd. prices.
- MEN'S TWEED SUITS—Asstd. prices.
- MEN'S WORSTED SUITS—Asstd. prices.
- MEN'S TROUSERS—Asstd. prices.
- MEN'S TRENCH COATS.

Customers report making quick sales with "Victory Brand" Clothing on account of the good fit and finish of the garments.

WHOLESALE ONLY.

**The White Clothing
Manufacturing Co., Ltd.**

259-261 Duckworth Street.



Fairbanks-Morse Marine Engines
require no other recommendation.

Fairbanks-Morse Stationary Engines
for Saw Mills, Hoists, etc.

A.H. Murray & Co., Ltd.

may2, eod

Buy Progress Brand Working Shirts, Pants & Overalls!

Roomy sizes, durable materials, strongly made in our own factory to withstand hard usage. The materials were bought a long time ago and are priced well below present quotations. This means a considerable saving to you. Keep the home wheels turning by buying local made goods.

NFLD. CLOTHING CO., Limited.

WHOLESALE ONLY.

J. J. St. John.

At Our Meat Counter.

- NEW SPARE RIBS.
- FAMILY STYLE PORK.
- HAM BUTT PORK.
- FAT BACK PORK.
- PORK LOINS.
- VERY CHOICE BEEF at 18c. lb.
- SUPERIOR HAMS and BACON.
- ASHLAND HAM.
- FRESH SALMON every morning.

J. J. St. John,

136 - 138 Duckworth Street

The Poor Man's Friend.

HERE I AM AGAIN.

I can save money for you. All you got to do is to give me that old Suit, Overcoat, Trench Coat or Raglan. Beat the tailors' prices and let the Clothes Doctor show you how to do it.

The Clothes Hospital,
200 Duckworth St. East (opp. T. & M. Winter's).
C. J. O'KEEFE, Clothes Doctor.

MINDARD'S LINIMENT FOR SALE EVERYWHERE.