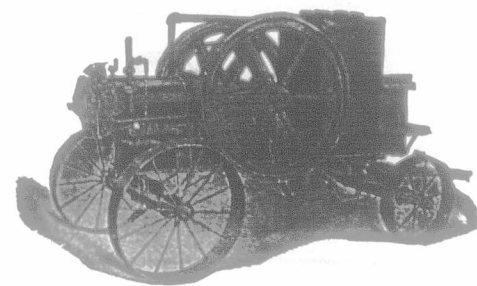


Stationary, for all Purposes.

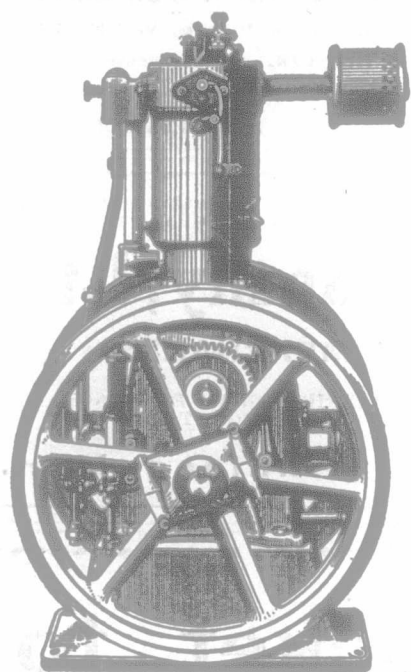
The "Ohio" Leads 'Em All!

The "Ohio" Gasoline Farm Engine is the only fit engine to have on a farm where one is a good way from the repair shop. It is so **simple** that there's nothing to get out of order. It is comparatively new, having been placed on the market within the past ten years, but in that time it has **outstripped all competitors in public favor.** Its greatest triumph culminated at the St. Louis Exposition, when in competition with other leading gasoline engines it won the Highest Award Gold Medal for efficiency, durability and simplicity. Built in sizes of from 1½ to 50 h.-p. Hundreds in use in Manitoba, giving the best of satisfaction. Write us for catalogue and prices, if interested.



Portable, for Threshing.

BURRIDGE - COOPER CO., LTD., General Machinery Dealers, **WINNIPEG.**



Your Profits

Will be greater, and you will save time, trouble and worry, as well, if you let an I. H. C. Gasoline Engine do your work. For safety, simplicity, durability and real economy, both in first cost and expense of operation, the

I. H. C. Gasoline Engine

is in a class by itself. It is perfectly practical, plain and easily understood—any bright boy of 12 can run it.

Let us prove to you that I. H. C. Gasoline Engines are best for

Feed Cutting, Wood Sawing, Husking and Shredding or Shelling Corn, Grinding Feed, Pumping, Churning, Separating, etc.

and a hundred and one other odd jobs about the farm that use up time and energy.

Vertical (like cut.) 2, 3, 5 H. P. Horizontal and Portable, 6, 8, 10, 12, 15 H. Power.

Call on the International Agent for information or write nearest branch house for catalogue, showing how "I. H. C." Gasoline Engines will save you money.

CANADIAN BRANCHES:

Calgary, Montreal, Regina, Toronto, London, Ottawa, St. John, Winnipeg.

INTERNATIONAL HARVESTER CO. OF AMERICA, CHICAGO.
(INCORPORATED.)

The Wheat City Business College

Brandon, Man.

The Best in the West

A postal brings full information.

J. B. Beveridge, F. E. Werry, Principals.

"AS GOOD AS THE WHEAT"

Over 17,000 persons in Canada have arrived at the conclusion that the **Great-West Life** can give them the best possible value in Life Insurance—a "No. 1 Hard" Policy.

Not through lavish advertisement, or the lapse of many years, has the Company attained its reputation, but solely through the attractiveness of its Policies.

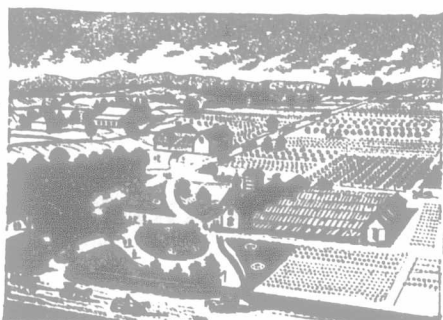
Over \$23,000,000 of business in force is the record for thirteen years.

As the standard of profitable Life Insurance, **Great-West Policies** are well said to be "as good as the wheat."

INFORMATION ON REQUEST.

THE GREAT-WEST LIFE ASSURANCE CO.
Winnipeg, Manitoba.

Canada's Greatest Nurseries



Salesmen Wanted

For every Town and District in
**MANITOBA, ASSINIBOIA,
SASKATCHEWAN & ALBERTA**

HARDY TESTED STOCK FOR WESTERN PLANTING.

Largest assortment, recommended by WESTERN EXPERIMENTAL STATIONS at BRANDON and INDIAN HEAD, in Fruit Trees, Small Fruits, Shrubs, Ornamentals, Seedlings for Wind-breaks, etc.

START NOW AT BEST SELLING SEASON.

Big Inducements, Exclusive Territory, Pay Weekly. Special Equipment for Western men.

Write now for Terms and Catalogue, and send 25c. for our **Aluminum Pocket Microscope** and 50c. for our **Handy Saw**, just the thing for trimming trees; cuts iron as well as wood.

STONE & WELLINGTON, Fonthill Nurseries,
Over 800 acres. Toronto, Ontario.

R. SECORD, President. GEO. ROY, Vice-President. A. W. TAYLOR, Manager. BANKERS, Bank of Nova Scotia, Edmonton. F. P. HOBSON, Treasurer.

The Alberta Mutual Fire Insurance Co.

Head Office: EDMONTON, N.-W. T.

The oldest Incorporated Farmers' Mutual in the Northwest Territories. Agents in unrepresented districts wanted. Correspondence solicited.

FARMERS, INSURE IN A HOME INSTITUTION.

DON'T BUY GASOLINE ENGINES

UNTIL YOU INVESTIGATE "THE MASTER WORKMAN" a two-cylinder gasoline engine. It is the only one-cylinder engine that can be mounted on a wagon at such a low price. It is the only one-cylinder engine that can be mounted on a tractor. Mention this paper, SEND FOR CATALOGUE. THE TEMPLE PUMP CO., Mrs. Meagher & 15th St., Chicago. THIS IS OUR FIFTY-FIFTH YEAR.

"Favorite" Churn



In 8 sizes, churning from ½ to 30 gallons!

Improved Steel Frame. Patent Foot and Lever Drive.

Patent Steel Roller Bearings.

Easy to operate. Bolts throughout in place of wood screws. Superior in workmanship and finish. **No other just as good. Accept no substitute.** If not sold by your dealer, write direct to us.

DAVID MAXWELL & SONS
St. Mary's, Ont.

WINDMILLS



Grain Grinders,
Gas & Gasoline Engines,
Tanks,
Bee Supplies,
Etc.

WRITE FOR CATALOGUES.

Gould, Shapley & Muir Co., Ltd.
BRANTFORD, CANADA.

British Columbia Farms

We have for sale a very large and complete list of selected dairy farms, orchards, poultry ranches and suburban homes, in the valley of the celebrated Lower Fraser and adjacent islands on the Coast. All in the neighborhood of Vancouver. Send for our pamphlet giving weather statistics and market prices of 27 different kinds of farm produce.

The Settlers' Association,

322 Cambie St.,

P. O. Box 329, Vancouver, B.C.

LANDOWNERS

Send for illustrated circulars of Sutherland's Galvanized Fence Stay. It saves posts, labor and money.

JOS. M. SUTHERLAND,
Ninth & Weber Sts.,
Sioux Falls, S. D.