

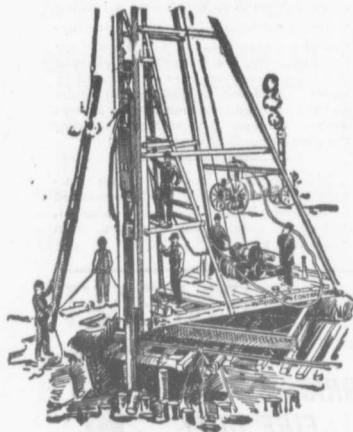
# The Canadian Bridge Co., Limited

WALKERVILLE, ONT.

MANUFACTURERS OF

## RAILWAY AND HIGHWAY BRIDGES

Locomotive Turn Tables.  
Roofs, Steel Buildings and  
Structural Iron Work of all descriptions



### PILE DRIVING

on land or water by Steam Pile Drivers or Drop Hammers.

**Portable Boilers  
Hoisting Engines  
Pumping Machinery  
TO LET**

Bridge Building, Trestle Work, Wharves,  
Dams, Diving Submarine Work and  
General Contracting.

**WM. HOOD & SON**  
10 Richmond Sq. MONTREAL

### Surveying and Drawing Instruments

*Best English Quality*

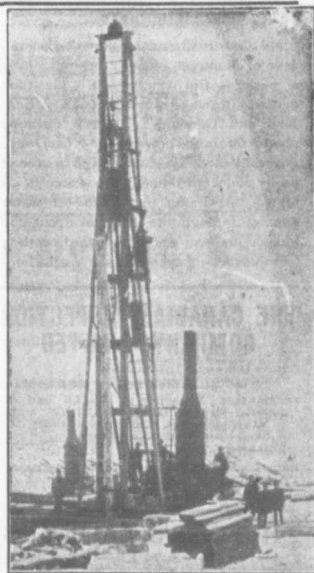
Manufactured by

**A. G. Thornton**  
Manchester, Eng.  
*Surveyors' and  
Engineers' Supplies*

*Write Us For Catalogue  
and Prices*

*The*  
**C. H. MORTIMER  
PUBLISHING CO.**  
of Toronto, Limited  
AGENTS FOR CANADA  
Confederation Life Bldg., TORONTO  
Alliance Building, MONTREAL

If you want to reach Municipalities advertise in the  
CONTRACT RECORD.



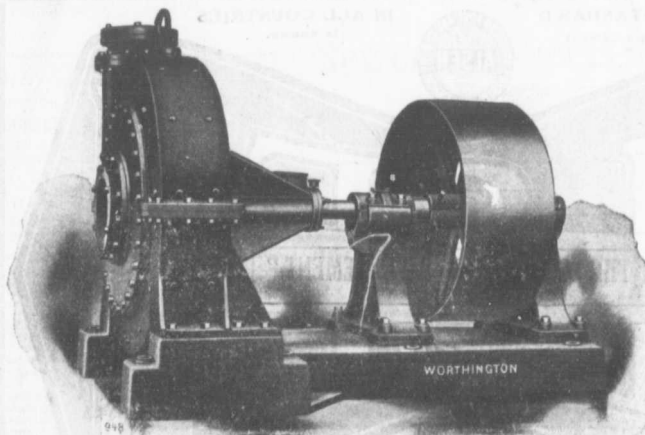
### PILE DRIVING

and Foundation Work.

By 5-ton Automatic Steam Pile Hammer,  
Water Jet or Drop Hammers, Dock Building,  
Submarine Work and Dredging.

**BUILDING MOVER AND WRECKER**  
General Contracting.

**JNO. E. RUSSELL, - Toronto**  
908 Queen St. E. - Phone M. 2007.



TEN INCH TURBINE DREDGING PUMP.

With removable chrome-steel lining and manganese-steel impeller. Used for handling phosphate rock and for dredging purposes. Capacity 2 500 gallons per minute against 50 feet head

**Pumps for  
Water Works  
Water Works  
Systems Installed  
Steam Boilers  
and Filters**

*Builders in Canada for  
Worthington Turbine  
Pumps.*

**THE JOHN McDougall  
CALEDONIAN IRON WORKS**

CO., LIMITED  
Montreal, Que.