

# JOHN DEERE ENGINE GANG



As it was pulled at the Winnipeg Motor Contest by a Rumely 35 Horse Power Steam Engine. (Bronze medal winner class C steam engines.)

## MORE JOHN DEERE ENGINE GANGS SOLD IN WESTERN CANADA THAN ANY COMPETITIVE MAKE THERE ARE REASONS

**EASY TO HANDLE.** The bottoms on the John Deere Engine Gangs are arranged in pairs which give great strength and make the plows run steady. This also permits of firmly bracing the beams and makes one plow steady the other. It is often necessary in actual field work to change the depth of plowing. This can be accomplished much more easily with the John Deere Engine Gang than with any other. The arrangement of the plows in pairs also permits of much better finishing at the ends without stopping the engine.

**WONT CLOG.** The curved beams on the John Deere Engine Gang give great clearance thus permitting them to go through straw, trash, weeds, and scrub, where other gangs will clog and cause trouble. With the John Deere Engine Gang you do not need an extra man to keep the plows clear of trash. This wide clearance also permits of plowing at greater depth.

**SCREW CLEVIS.** In addition to the regular clevis adjustment each beam is fitted with a screw clevis when adjustment often needed, it not being necessary to stop the engine to do this. A turn or two with an ordinary wrench while the outfit is moving throws the beam point of the plow needing adjustment up or down giving it the best position to get the required results. This saves time and is a most important feature.

JOHN DEERE ENGINE GANGS are made in 4, 6, 8, 10, and 12 Bottoms

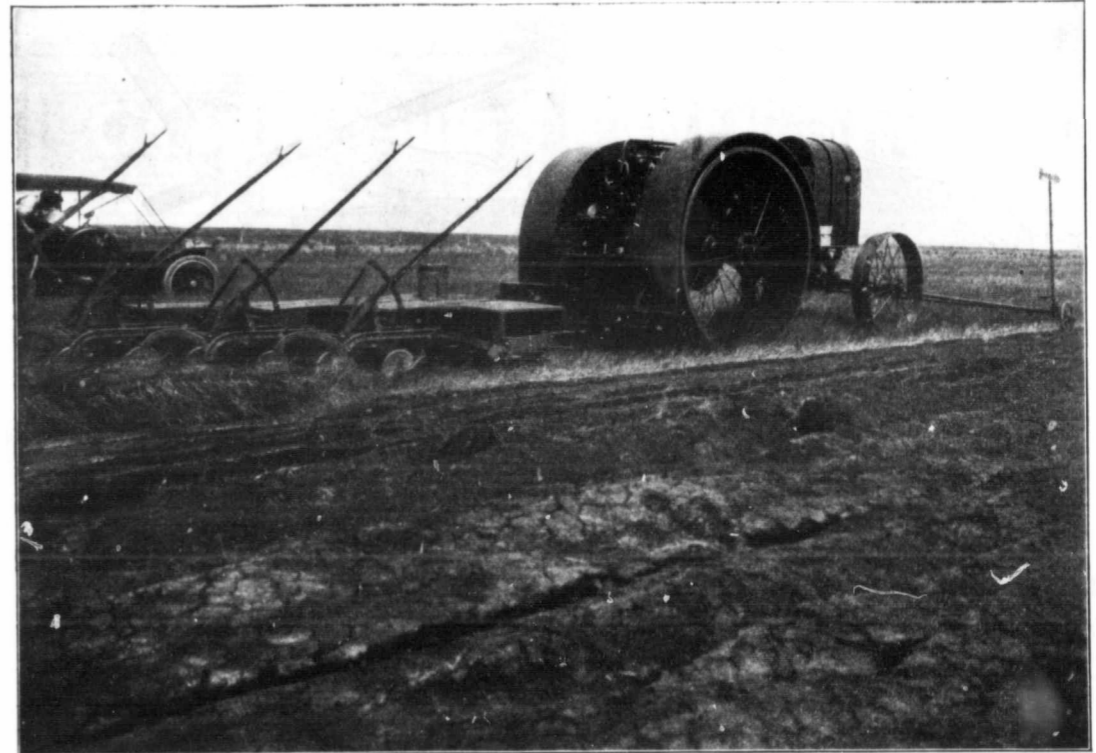
You want to see the Best Engine Gang—Look for a John Deere

WRITE US FOR BEAUTIFULLY ILLUSTRATED FREE BOOKLET

## JOHN DEERE PLOW CO. LTD.

WINNIPEG REGINA CALGARY EDMONTON SASKATOON

# JOHN DEERE ENGINE GANG



As it was pulled at the Winnipeg Motor Contest by a Gas Traction 30 Horse Power Gasoline Engine. (Gold Medal winner class C Internal Combustion Engine.) Photo taken while outfit was in motion. Note that furrow is just turning.

## MORE JOHN DEERE ENGINE GANGS SOLD IN WESTERN CANADA THAN ANY COMPETITIVE MAKE THERE ARE REASONS

**WORKS WITH COULTERS.** The plows on the John Deere Engine Gang are so assembled as to permit the use of rolling coulters, with the same adjustment as is employed on a regular sulky or two bottom gang plow. This coulters arrangement is a big advantage in breaking sod as they will cut off slices of sod easily thus reducing the draft and also cutting the partially rotted turf into sections, thus avoiding chokir g.

**RIGID CONSTRUCTION AND PERFECT DESIGN.** The frame on the John Deere Engine Gang has a bridge-like steel construction. It is very light in proportion to its strength and is devoid of unnecessary and cumbersome castings. It is so designed that you can hitch a John Deere Engine Gang to any style of tractor close up, and still maintain the line of draft.

Wide faced, easy running wheels carry the frame, so that no power is consumed in dragging dead weight, it being all practically available for plowing.

**STANDARD SIZES.** 4 or 6 plows on one frame. 6 or 8 plows on one frame. 10 or 12 plows on one frame. Extension can be furnished for the 12 bottom frame, allowing two more plows to be used, making 14.

We carry a stock of Engine Gangs at Winnipeg and at all of our Branch Houses

You want to use the Best Engine Gang—Get a John Deere

WRITE US FOR BEAUTIFULLY ILLUSTRATED FREE BOOKLET

## JOHN DEERE PLOW CO. LTD.

WINNIPEG REGINA CALGARY EDMONTON SASKATOON