

A QUEER PHASE OF MUNICIPAL INSURANCE.—When the State capital building of Wisconsin was burnt, the loss was estimated at \$30,000. Since then, the damage has been stated to be \$185,000. It is alleged, says "The Investigator," that political reasons are at the back of the low estimate, the Governor of the State being to minimize the disaster because he was responsible for the cancellation of the insurance upon the building. It is interesting to note that the local authorities in Wisconsin are abandoning the policy of the State authorities and are insuring the public buildings under their care.

Hartford Fire Insurance Co.

HARTFORD, CONN.
ESTABLISHED — — 1794.

CASH ASSETS, — — \$14,542,851.78
Surplus to Policy-Holders — \$5,187,796.37

GEO. L. CHASE, President.

CHAS. E. CHASE, Vice-President. P. C. ROYCE, Secretary.
R. M. BISSELL, Vice-President. THOS. TURNBULL, Asst. Secretary
H. A. FROMINGS, Montreal Manager,
90 St. Francois Xavier St.

THE Metropolitan Life INSURANCE CO.

Amount of Canadian Securities Deposited with the Dominion Government for the protection of policy-holders in Canada..... \$1,800,000.00

Proof of Public Confidence

This Company has more premium-paying business in force in the United States than any other Company, and for each of the last 10 years has had more New Insurances accepted and issued in America than any other Company.

The Number of Policies in force is greater than that of any other Company in America, greater than all the Regular Life Insurance Companies put together (loss one) and can only be appreciated by comparison. It is a greater number than the Combined Population of Greater New York, Chicago, Philadelphia, Boston and St. Louis.

Significant Facts

This Company's policy-claims paid in 1903 averaged in number one for each minute and a third of each business day of 8 hours each, and, in amount, \$80.00 a minute the year through.

THE DAILY AVERAGE OF THE COMPANY'S BUSINESS DURING 1903.

359 per day in number of claims paid.

6,297 per day in number of Policies issued.

\$1,303,559.06 per day in New Insurance written.

\$98,582.76 per day in Payments to Policyholders and addition to Reserve.

\$53,841.18 per day in Increase of Assets.

Full particulars regarding the plans of the Metropolitan may be obtained of its Agents in all the principal cities of Canada, or at

Home Office: 1 Madison Ave., New York City.

WANTED—Lady expert Stenographer accustomed to Insurance work, desires position immediately. First-class references. Address, "Confidential," Chronicle Office.

WANTED.—By a young man, position in a Fire Insurance Office. Several years' experience. First-class references. Apply,
X. Y., Box 578.

ALL

banking business entrusted to our keeping receives the most careful attention

EASTERN TOWNSHIPS BANK

HEAD OFFICE :
SHERBROOKE, QUE.

TWENTY-SIX BRANCHES IN CANADA.
Correspondents in all parts of the World.

Capital, \$3,000,000 W. M. FARWELL, Pres.
Reserve, \$1,450,000 JAS. MACKINNON,
Gen'l Mgr

The Sovereign Bank of Canada

HEAD OFFICE, TORONTO
GENERAL MANAGER'S OFFICE, . . . MONTREAL

Capital Authorized \$2,000,000 00
Capital Paid Up 1,300,000 00
Reserve Fund 325,000 00

PRESIDENT: H. S. HOLT, Esq.

VICE-PRESIDENTS:

RANDOLPH MACDONALD, Esq. JAMES CARRUTHERS, Esq.

DIRECTORS.

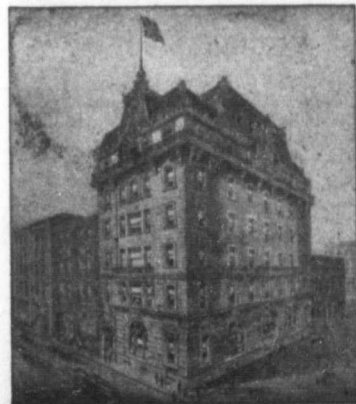
A. A. ALLAN, Esq. ARCHIBALD CAMPBELL, Esq., M.P.
HON. PETER MCCLAREN. HON. D. McMILLAN.
JOHN FUGSLEY, Esq. HENRY R. WILSON, Esq.

BRANCHES:—Amherstburg, Aylmer, Belmont, Claremont, Ont. Clinton, P. Q., Dashwood, Harrow, Havelock, Hensall, Exeter, Ont. Freleighsburg, P. Q., Milverton, Mount Albert, Markham, Ottawa, Market Branch, Ottawa, Ont., Marmora, Montreal, West End Branch, Newmarket, Perth, St. Catharines, Stirling, Stouffville, Sutton, P. Q., Unionville, Waterloo, P. Q., Zurich.

BANKERS AND CORRESPONDENTS:

In the United States—J. P. Morgan & Co., New York; The Standard Trust Company, New York; Commercial National Bank, Chicago; Farmers and Mechanics National Bank, Philadelphia; Atlantic National Bank, Boston; Merchants' and Manufacturers' National Bank, St. Louis, Mo. State Savings Bank, Detroit. In Great Britain—J. S. Morgan & Co. London.
In France—Morgan, Harjes & Co., Paris. In Germany—Dresdner Bank, Hamburg, Berlin, &c.

D. M. STEWART, General Manager.



COMPANY'S BUILDING, MONTREAL.

THE LONDON & LANCASHIRE LIFE ASSURANCE COMPANY.

AGENTS IN ALL THE IMPORTANT CITIES IN CANADA.

Reports, Prospectuses, Particulars of Privileges, etc
Furnished on Application.

Business in force - \$40,000,000
New Assurances (1902) - 3,424,020
Premium Income - 1,373,930
Invested Funds - 8,815,340

Board of Directors

LORD STRATHCONA and MT. ROYAL
R. B. ANGUS, Esq., C. M. HAYS, Esq.
H. STICKMAN, Esq., E. L. FRASE, Esq.,
C. R. HOSMER, Esq.,
B. HAL BROWN, Manager.