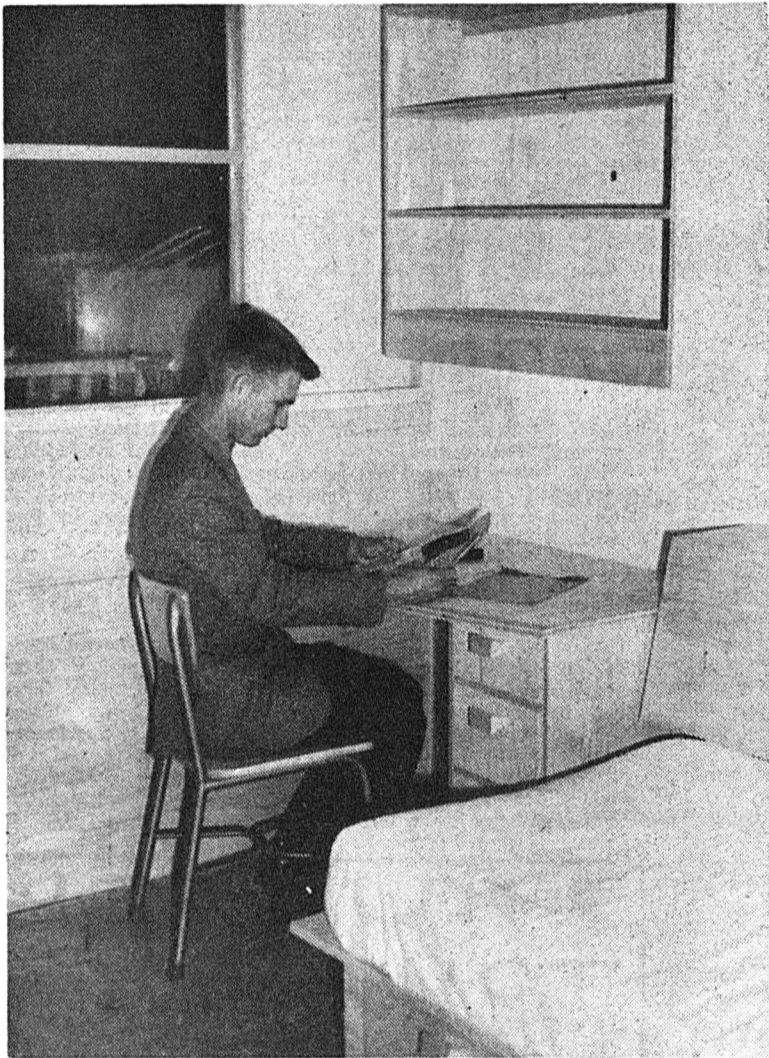
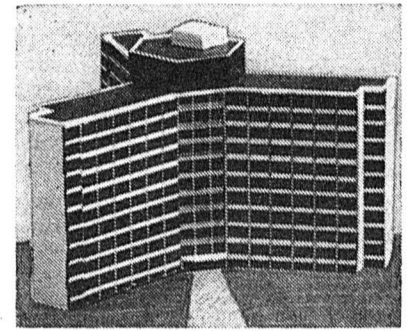


gateway features

THE HI-RISE

Second of a two-part series on your expanding campus—a preview of the new U of A “high-rise” residences.

Location is west of the Jubilee Auditorium. Two residences and a food-services building are to be built first—should be finished in approximately two years. The area is large enough for additional residences in the future. Exteriors will probably match that of the Jubilee Auditorium.



MOCK-UP interior arrangement of residence room

For some time planning committees talked in terms of three residences, but the latest tentative information available to A. A. Ryan, chairman of the Residence Planning Committee, is that only two will be built at first, and that a third may follow “as needed,” allowing for possible modifications which may prove desirable after the first two are in use.

There is still some question as to financing arrangements, which are settled between the Board of Governors and Public Works.

HI-RISE ENROLMENT

Present university residences house approximately 750 students, including St. Stephen's and St. Joseph's. Present full time enrolment on this campus is approximately 6,635.

Five thousand, eight hundred and eighty five students find their own accommodations.

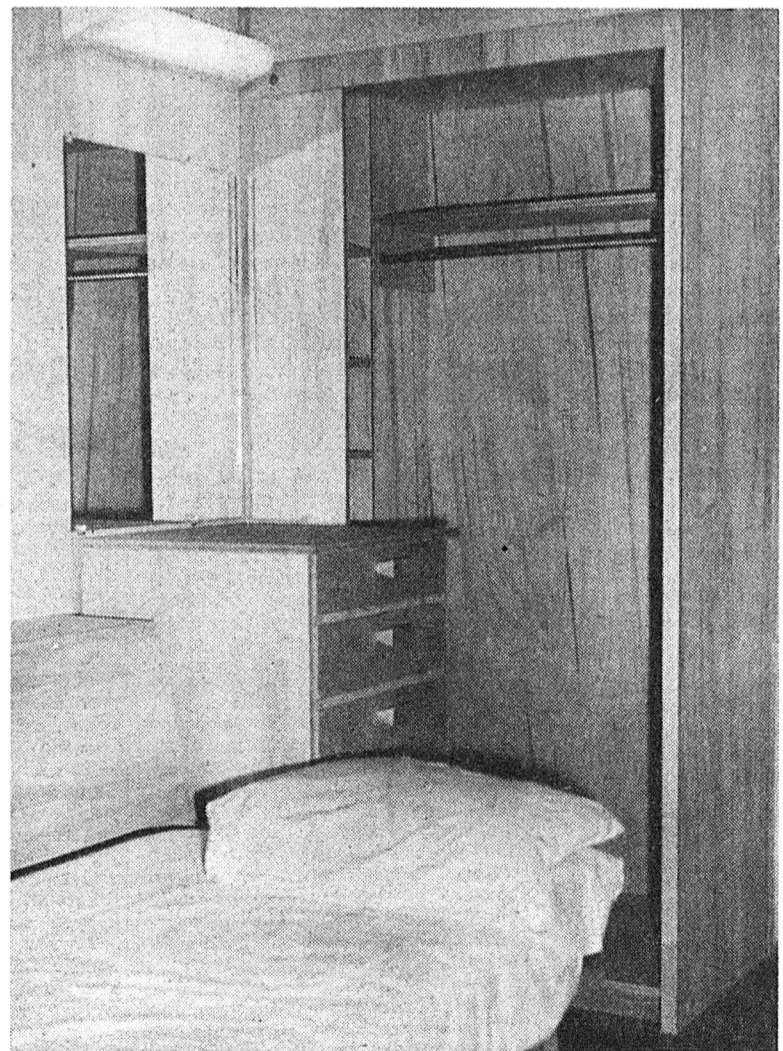
The two new residences will house 500-600 students per building, depending on the proportion of double and single rooms. When they are completed, on-campus accommodations will be 1,950 at a maximum. (We understand that some, or all, of the present residences are approaching the end of their usefulness as such, but for now we will assume that they will be retained.)

Estimated registration in 1963 (full-time—this campus) is 8,020. Assuming the new residences will be in use, this leaves at least 6,070 students to find their own accommodations, a larger number than now live off campus. Nor will enrolment likely cease accelerating after 1963. According to estimates, student population on this campus will have doubled in eleven years. (Estimated figures are from a table prepared by the Long-Range Planning Committee.)

On these pages you will find a discussion of some of the difficulties encountered in off-campus housing. There is reason to believe that such problems will intensify rather than be relieved over the next few years. As students are forced to seek accommodations farther and farther from campus, the parking problems, already serious, will grow to major proportions.

Gateway Features took advantage of the opportunity when Premier Manning was on campus to ask him if, in his opinion, the people of Alberta would support a university expansion program rapid enough to meet our needs, or if other steps might have to be taken, (e.g. cut down enrolment). He said yes, he feels that the people will support any “real need,” but indicated that there is quite a range of opinion on what is really needed.

In other words, we will find in the future, as in the past, that we won't get enough accommodations merely by asking for them. We'll have to get slightly desperate. It will take continual convincing—that Albertans can make no better investment.



. pure and undefiled.

Photos by Conrad Stenton