

## The coal you save

Do you think a cheap range an economy? It may appear so when buying it.

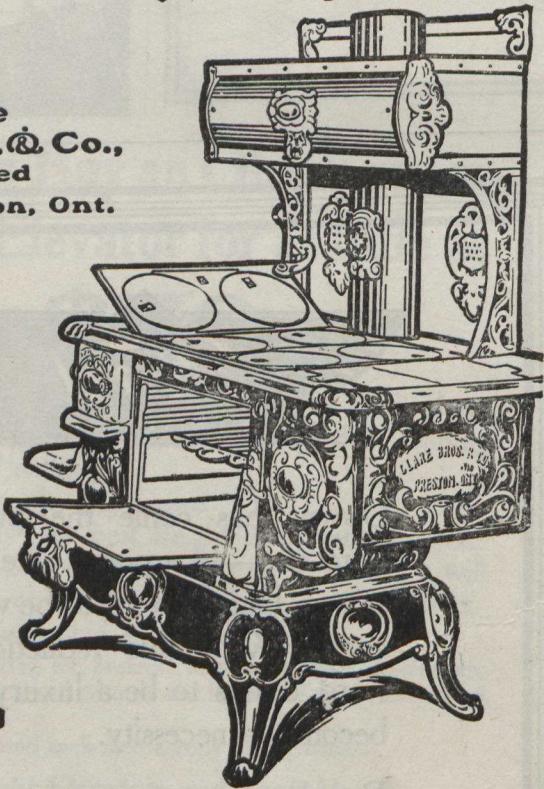
But when you see it eating up the coal—When the oven is slow in heating—When first one part then another requires renewing—Then your cheap range is **not** an economy, but the very opposite. Then you will see that it wastes enough coal to pay for a good range.

The Peerless Range is a well-designed, strongly constructed range—designed for economy of fuel—constructed for durability and wear. Ask your neighbor what she thinks of her Peerless. Get her opinion of it as a coal-saver and a baker. You will find that your cheap stove has actually cost more than your neighbor's well-designed, economical, and convenient Peerless.

# PEERLESS PENINSULAR RANGE

"Ask your neighbor"

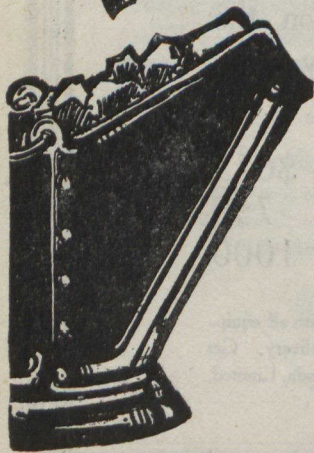
Clare  
Bros. & Co.,  
Limited  
Preston, Ont.



### INVEST A CENT.

Before investing in a new range it will pay you well to see our book "The cost of a Range." A post-card will bring it to you.

203



## The Keyword of the 1913 Russell "30" is "Comfort"



---comfort that comes first from an engine---matchless for performance on Canadian roads---quiet, flexible, simple, yet powerful when power is needed.

---comfort that comes from complete equipment---electric starting device, electric lighting, power pump, demountable rims, spare rim, pantosole top, luxurious upholstery, and other items too numerous to list here.

---comfort that comes from faultless design and complete construction in one big modern plant, backed by years of experience of the actual needs of Canadian motoring.

---comfort, elegance, speed, power! Comparison will prove this car to have no equal of its type in Canada.

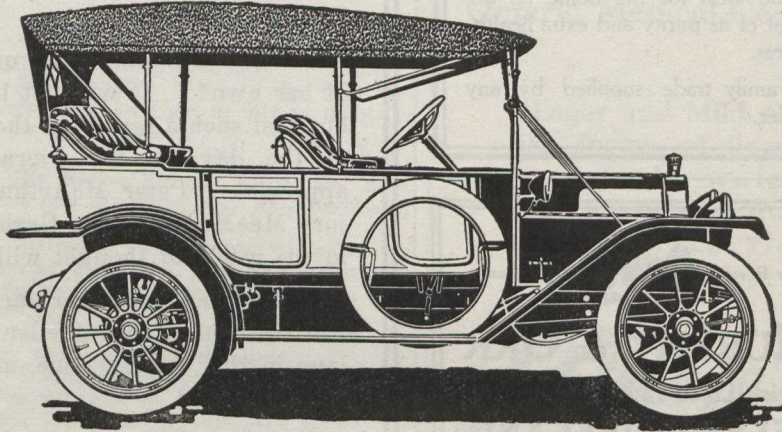
### PRICES FULLY EQUIPPED

Russell "30" 1913 Touring	-	-	-	-	-	-	\$2500
Russell "30" 1913 Seven Passenger	-	-	-	-	-	-	2600
Russell "30" 1913 Torpedo	-	-	-	-	-	-	2600
Russell "30" 1913 Torpedo Roadster	-	-	-	-	-	-	2550

All prices F.O.B. Factory.

Also Makers of the Russell-Knight Car.

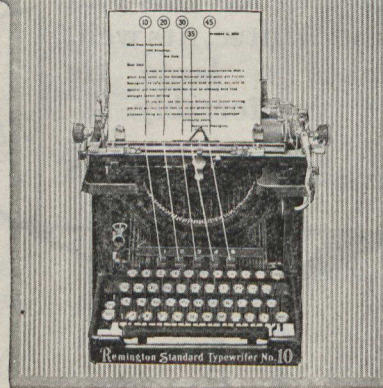
We send literature and tell where the Russell "30" may be seen, on request.



Russell Motor Car Co., Limited  
WEST TORONTO

BRANCHES AT---Toronto, Hamilton, Montreal, Winnipeg,  
Calgary, Vancouver, Melbourne, Aust.

## An Improvement That Pays for the Machine



The above is an accurate statement of the service rendered by the Column Selector of the Model 10

## Remington Typewriter

On the Model 10 Remington the starting point of every line of the letter is reached by one touch on a Column Selector Key. The time saved by eliminating hand adjustments of the carriage averages 40 seconds per letter and envelope. This average has been determined by numerous comparative tests.

Forty seconds per letter! Multiply that by the number of letters your operator writes—every day and every week. Figure this time on the basis of the wages you pay your operator. Then you will see how quickly this improvement pays for the machine.

Remington Typewriter Company  
Limited, Toronto, Canada  
Offices in Montreal, Winnipeg, Calgary,  
Vancouver, etc.