

On this and the succeeding Page is illustrated an Assortment of Patterns for

LADIES', MISSES' AND CHILDREN'S

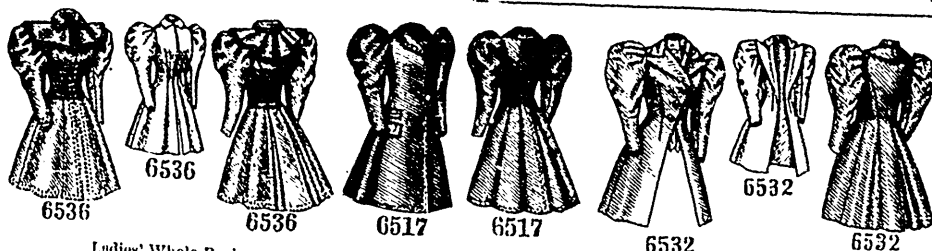
CLOAKS AND COATS,

Suitable for the Winter Season.

which many will no doubt be pleased to inspect.

The Patterns can be had from Ourselves or from Agents for the Sale of our Goods. In ordering, please specify the Numbers, Sizes and Ages desired.

The Butterick Publishing Co.
(LIMITED).



Ladies' Whole-Back Coat (Copyright): 13 sizes. Bust measures, 28 to 46 inches. Any size, 1s. 6d. or 35 cents.

Ladies' Double-Breasted Coat (In Three-Quarter Length) (Copyright): 13 sizes. Bust meas., 28 to 46 inches. Any size, 1s. 6d. or 35 cents.

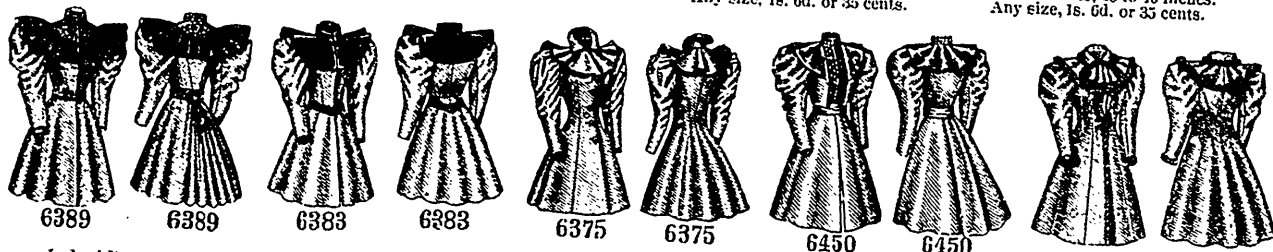
Ladies' Whole-Back Coat, with Vest, which may be Omitted (Copyright): 13 sizes. Bust measures, 28 to 46 inches. Any size, 1s. 6d. or 35 cents.



Ladies' Coat, with Removable Ripple Collar (In three-Quarter Length) (Copyright): 13 sizes. Bust measures, 28 to 46 inches. Any size, 1s. 6d. or 35 cents.

Ladies' Coat (Copyright): 13 sizes. Bust meas., 28 to 46 inches. Any size, 1s. 6d. or 35 cents.

Ladies' Coat (Copyright): 13 sizes. Bust measures, 28 to 46 inches. Any size, 1s. 6d. or 35 cents.



Ladies' Russian Coat (Copyright): 13 sizes. Bust meas., 28 to 46 inches. Any size, 1s. 6d. or 35 cents.

Ladies' Russian Coat (Copyright): 13 sizes. Bust meas., 28 to 46 inches. Any size, 1s. 6d. or 35 cents.

Ladies' Coat (Copyright): 13 sizes. Bust measures, 28 to 46 inches. Any size, 1s. 6d. or 35 cents.

Ladies' Russian Coat (Copyright): 13 sizes. Bust meas., 28 to 46 inches. Any size, 1s. 6d. or 35 cents.

Ladies' Coat, with Ripple Collar and Jabot Fronts (Copyright): 13 sizes. Bust meas., 28 to 46 inches. Any size, 1s. 6d. or 35 cents.



Ladies' Commodore Coat (Known as the English Coat) (Copyright): 13 sizes. Bust measures, 28 to 46 inches. Any size, 1s. 3d. or 30 cents.

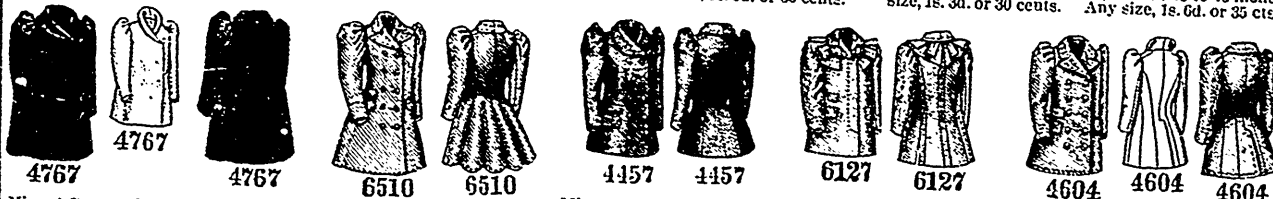
Ladies' Double-Breasted Coat (Copyright): 13 sizes. Bust measures, 28 to 46 inches. Any size, 1s. 6d. or 35 cents.

Ladies' Coat (Copyright): 13 sizes. Bust measures, 28 to 46 inches. Any size, 1s. 6d. or 35 cents.

Ladies' Coat (Copyright): 13 sizes. Bust measures, 28 to 46 inches. Any size, 1s. 6d. or 35 cents.

Ladies' Empire Coat (Copyright): 10 sizes. Bust measures, 28 to 46 inches. Any size, 1s. 3d. or 30 cents.

Ladies' Coat (Suitable for Seal-Skin, Plush, etc.) (Copyright): 10 sizes. Bust meas., 28 to 46 inches. Any size, 1s. 6d. or 35 cts.



Misses' Coat (Suitable for Seal-Skin, Plush, etc.) (Copyright): 7 sizes. Ages, 10 to 16 years. Any size, 1s. 3d. or 30 cents.

Misses' Double-Breasted Coat (Copyright): 7 sizes. Ages, 10 to 16 years. Any size, 1s. or 25 cents.

Misses' Commodore Coat (Known as the English Coat) (Copyright): 7 sizes. Ages, 10 to 16 years. Any size, 1s. or 25 cents.

Girls' Coat (Copyright): 8 sizes. Ages, 5 to 12 years. Any size, 1s. or 25 cents.

Misses' Coat (Copyright): 7 sizes. Ages, 10 to 16 years. Any size, 1s. or 25 cents.



Child's Coat (Copyright): 6 sizes. Ages, 1 to 6 years. Any size, 10d. or 20 cents.

Little Girls' Coat (Copyright): 7 sizes. Ages, 2 to 8 years. Any size, 10d. or 20 cents.

Child's Empire Coat, with Ripple Collar (Copyright): 7 sizes. Ages, 2 to 6 years. Any size, 10d. or 20 cents.

Little Girls' Empire Coat, with Ripple Collars (Copyright): 8 sizes. Ages, 2 to 7 years. Any size, 10d. or 20 cents.

Child's Coat, with Hood, which may be Omitted (Copyright): 5 sizes. Ages, 2 to 6 years. Any size, 10d. or 20 cents.