

new facade of 'Enfant Jesus Church, to cost \$40,000: Masonry and steel work, Martineau & Prenoveau; carpenter and joiner's work, roofing, plastering and painting, Reeves Bros. — L. R. Nontbriant, architect, has awarded the contract for one house on Sherbrooke street, corner of Timothee, cost \$5,350, as follows: Stonework, Chapleau & Desjardins; plumbing, roofing, and heating, Jos. Laurier; woodwork, L. T. Deslauriers. Same architect has awarded the contract for alterations to house on St. Denis street, corner Ernest, to Henry Demers, cost \$1,900. — R. H. Buchanan & Co., Montreal, have been awarded the contract to fit out the St. Lawrence Hall,

Cacouna, with tanks, supplying bath and general water supply.

TORONTO, ONT.—The City Council have finally decided to accept the tender of Stamsen & Blome, the Chicago contractors, for the construction of the concrete sidewalks on which they were the lowest tenderers.—The Board of Control last week awarded contracts as follows: Brick pavement, Dovercourt road, Queen to Armour, \$5,044, John McBean Asphalt pavements, Parkroad, Crescent road to south side of bend, \$5,425, City Engineer; Harvard avenue, Call der-street to Roncesvalles-avenue, \$6,248, Constructing and Paving Co.; Albany-avenue, Bloor to Wells-street,

\$11,937, Barber Asphalt Co.; Elm-avenue, Sherbourne to Glen Road, \$6,531, Constructing and Paving Co. Cedar block pavement, Wyndham-street, Brock-avenue to St. Clarens-avenue, \$11,47, Constructing and Paving Co. Brick sidewalk, Sherbourne-street, east side, Ancroft-place to bridge, 70 cents per lineal foot, A. J. Brown. Concrete sidewalks, Phoebe-street, north side, Spadina to 213 feet east of Huron-street, 59 cents per lineal foot, Harvard & Leach; Dunn-avenue, west side, King to Queen, 97½ cents; east side, \$1.02 per lineal foot, W. F. Grant & Co.; Willcocks-street, south side, Spadina to Robert-street, 71 cents per lineal foot,

The Dominion Securities

Corporation, Limited
26 King St. E., TORONTO.

Highest market prices
paid for

MUNICIPAL DEBENTURES

Paving Granite

Granite Sets for Street Paving. — CURBING cut to any shape ordered. — Fine Rich Colors for Building and Monumental Purposes.

Quarries, St. Philippe d'Argenteuil, P. Q.

Address all communications to

JOS. BRUNET - COTE DES NEIGES, MONTREAL

ALWAYS IN STOCK

PIG LEAD, PIG TIN AND SOLDER

Syracuse Smelting Works, Montreal, P. Q.

ARTIFICIAL STONE PAVEMENTS

SIDEWALKS A SPECIALTY

CORPORATIONS Will do well to consider our work and prices before letting contracts

The Silica Barustic Stone Company of Ontario, Limited.

WALTER MILLS,
General Manager.

Head office:
FARGESOLL, ONT

J. C. EDWARDS, RUABAN, North Wales, England

MANUFACTURER OF

RUABAN BLUE VITRIFIED GOODS, IMPERISHABLE BLUE AND BUFF PAVING CLINKERS

STABLE BRICKS, ETC.

Prices on application to

ARTHUR LAURENT, 68 D'Artigny St., Quebec, Canada

N. B.—The 8 Panel Blue Adamantine Brick (9 x 4½ x 3), has been used extensively for paving Quebec streets.

The Canadian Portland Cement Company, Limited

Manufacture **"RATHBUN'S STAR"**
"BEAVER" "ENSIGN"

WORKS:

Strathcona, Ont.; Marlbank, Ont.

CAPACITY:

500,000 Barrels per Annum

—For Prices, write, wire, 'phone or call on our Sales Agents:

THE RATHBUN COMPANY

310-312 Front Street West

TORONTO, ONT.

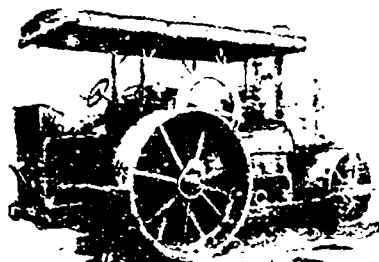
Telephone Main 2379.

St. Lawrence Portland Cement Co.

264 Notre Dame Street West

MONTREAL, QUE.

Telephone Main 3987.



BRANTFORD PITTS DOUBLE ENGINE STEAM ROAD ROLLER

IN THREE SIZES—10, 12 and 16 ton.

CORRESPONDENCE SOLICITED.

WATEROUS, Brantford, Canada.

Hugh Cameron & Co., Selling Agents, 16 East Queen Street, Toronto

FIRE APPARATUS

and

ROAD MACHINERY

FIRE ENGINES in five sizes, with a full line of fire-fighting goods

We Rebuild other makes of Fire Engines with our patent Boiler.



Studebaker Sprinkler

(PATENT IMPROVED.)

Does not clog or get out of order. Greatest width of spray Can be graded from driver's seat to any volume

We also make...

IMPROVED VERTICAL SPRAY

... for Pavements

Street Sweeping Machine

Is the Standard of Perfection.

Patent Improved

Because no sweeper so effectively does the work for which it is designed as "The Studebaker."

It Sweeps Clean. No sweeper is constructed with the same degree of care and mechanical precision.

It Wears Well. "The Studebaker" has the smallest possible number of working parts, and has less wearing than any other sweeper made. It is free from unnecessary complications. With reasonable care it does not get out of order. Send for complete descriptive catalogue

Geo. Heaman, Mfr., London, Ont.