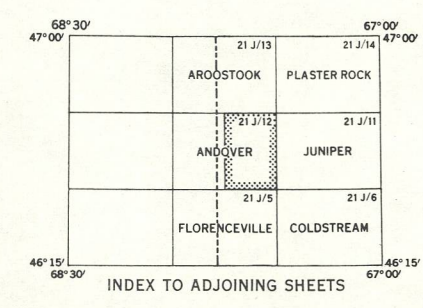
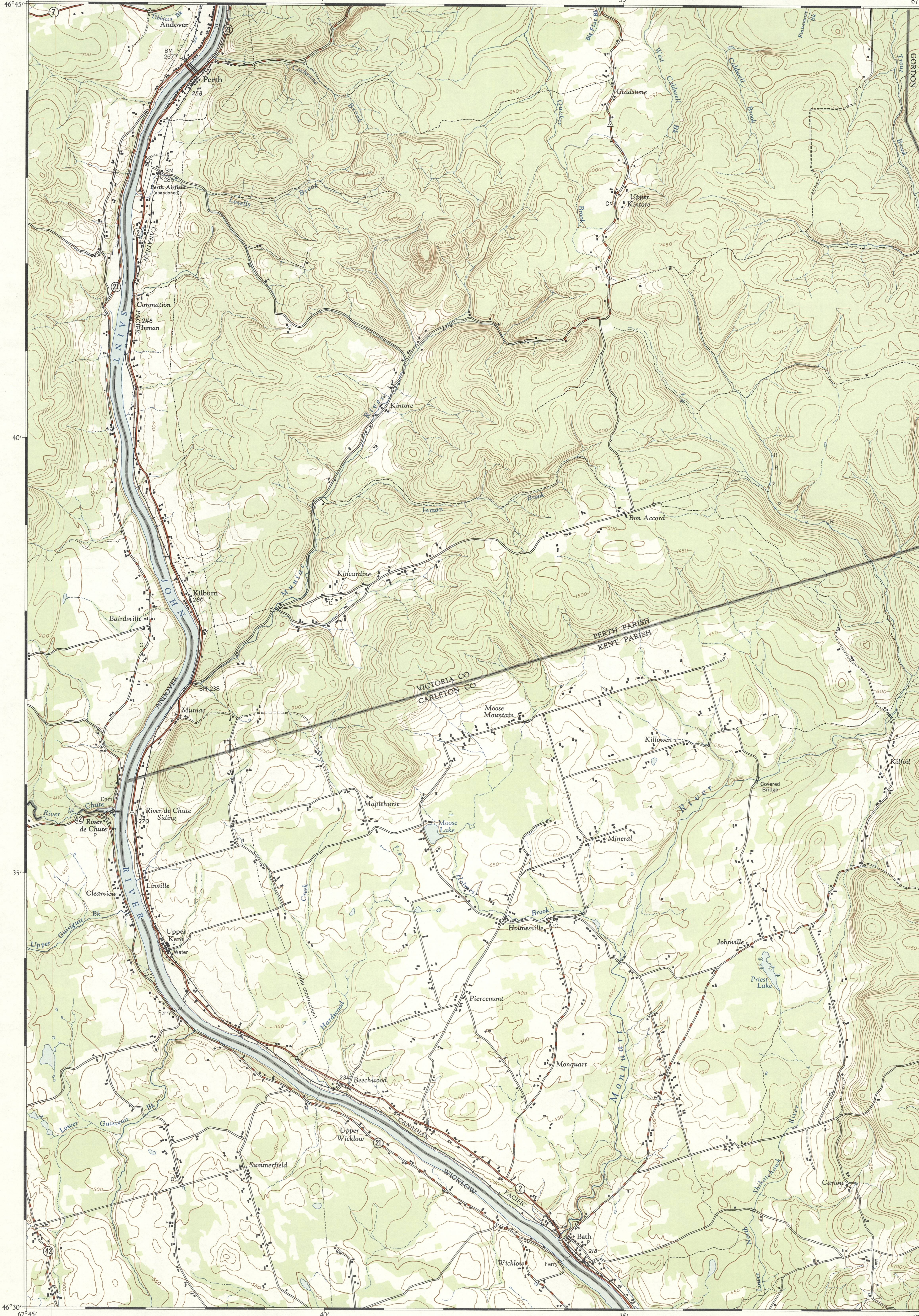




CANADA  
DEPARTMENT OF  
MINES AND TECHNICAL SURVEYS  
SURVEYS AND MAPPING BRANCH

REFERENCE

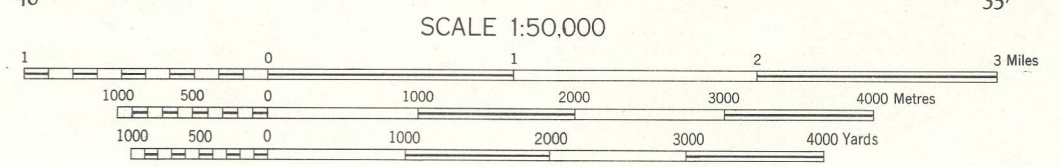
- Roads:  
hard surface, all weather... more than 2 lines 2 lines  
hard surface, all weather... less than 2 lines 2 lines  
loose surface, all weather... 2 lines or more less than 2 lines  
loose surface, dry weather... 2 lines or more less than 2 lines  
Cart Track...  
Trail or Portage...  
Railways:  
standard gauge, multiple track... Station  
standard gauge, single track... Stop  
abandoned...  
narrow gauge, single track...  
Cutting, embankment...  
Bridges:  
road, railway...  
overpass, underpass...  
Boundaries:  
International...  
Province or State...  
County or District...  
Township or Parish...  
Reservation: Indian, Park, etc...  
Surveyed Line...  
Power Transmission Line...  
Telephone Line...  
Horizontal Control Point...  
Boundary Mon...  
Bench Mark...  
Spot Elevation, (in feet)...  
Building: Barn...  
Church, Cemetery...  
School, Post Office...  
Mine or Open Cut...  
Quarry...  
Sand or Gravel Pit...  
Lake, intermittent or Pond...  
Lake or Shoreline, indefinite...  
Stream, intermittent or dry...  
Stream, indefinite...  
Irrigation Canal or Ditch...  
Marsh or Swamp...  
Inundated Land...  
Falls, Rapids...  
Foresore Flats...  
Bluff, Cliff or Escarpment...  
Lighthouse...  
Wharf or Pier, Ferry...  
Breakwater...  
Reef, Rock or Small Island...  
Contours:  
elevation...  
depression...  
approximate...  
Forest...



MAGNETIC DECLINATION 21°44' WEST,  
AT CENTRE OF SHEET 1954.  
Annual magnetic change 1°30' easterly.

ANDOVER  
NEW BRUNSWICK  
21 1/2 EAST HALF  
SECOND EDITION

Produced by the Surveys and Mapping Branch,  
Department of Mines and Technical Surveys, 1954,  
from air photographs taken in 1945.  
Printed by the Army Survey Establishment, R.C.E.,  
Department of National Defence, 1954.  
Copies may be obtained from the Map Distribution  
Office, Department of Mines and Technical Surveys,  
Ottawa, at 25 cents each.



CONTOUR INTERVAL 50 FEET  
North American Datum 1927  
All Elevations in Feet above Mean Sea Level

SUPERSEDED  
EDITION