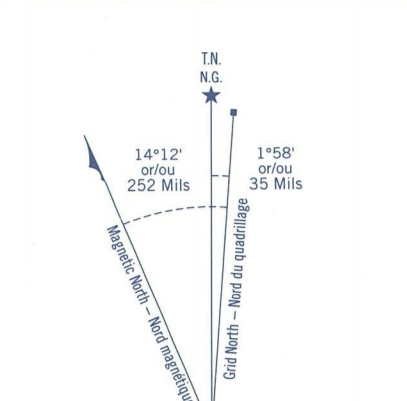


Military users:
refer to this map as:
Référence de cette carte
pour usage militaire:

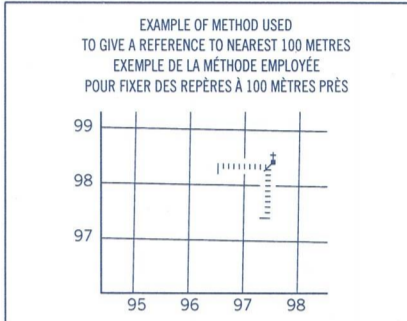
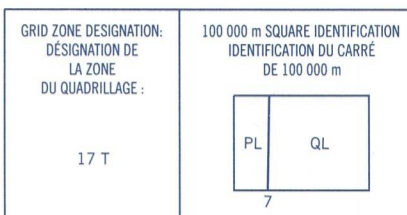
SERIES A 751
MAP 31 E/9
EDITION 5 MCE



This diagram with its vertical and horizontal scales
APPROXIMATELY REPRESENTS THE
SCALE OF THIS MAP.
Ce diagram représente
APPROXIMATIVEMENT L'ÉCHELLE DE
CETTE CARTE.

ONE THOUSAND METRE
UNIVERSAL TRANSVERSE MERCATOR GRID
ZONE 17
QUADRILLAGE UNIVERSEL TRANSVERSE DE MÉRIDIEN
DE MILLE MÈTRES

BROWN NUMBERED TICKS INDICATE
THIS 1000 METRE U.T.M. GRID
ZONE 17
LES AMORCES BRUNES NUMÉROTÉES REPRÉSENTENT
LE QUADRILLAGE U.T.M. DE 1000 MÈTRES



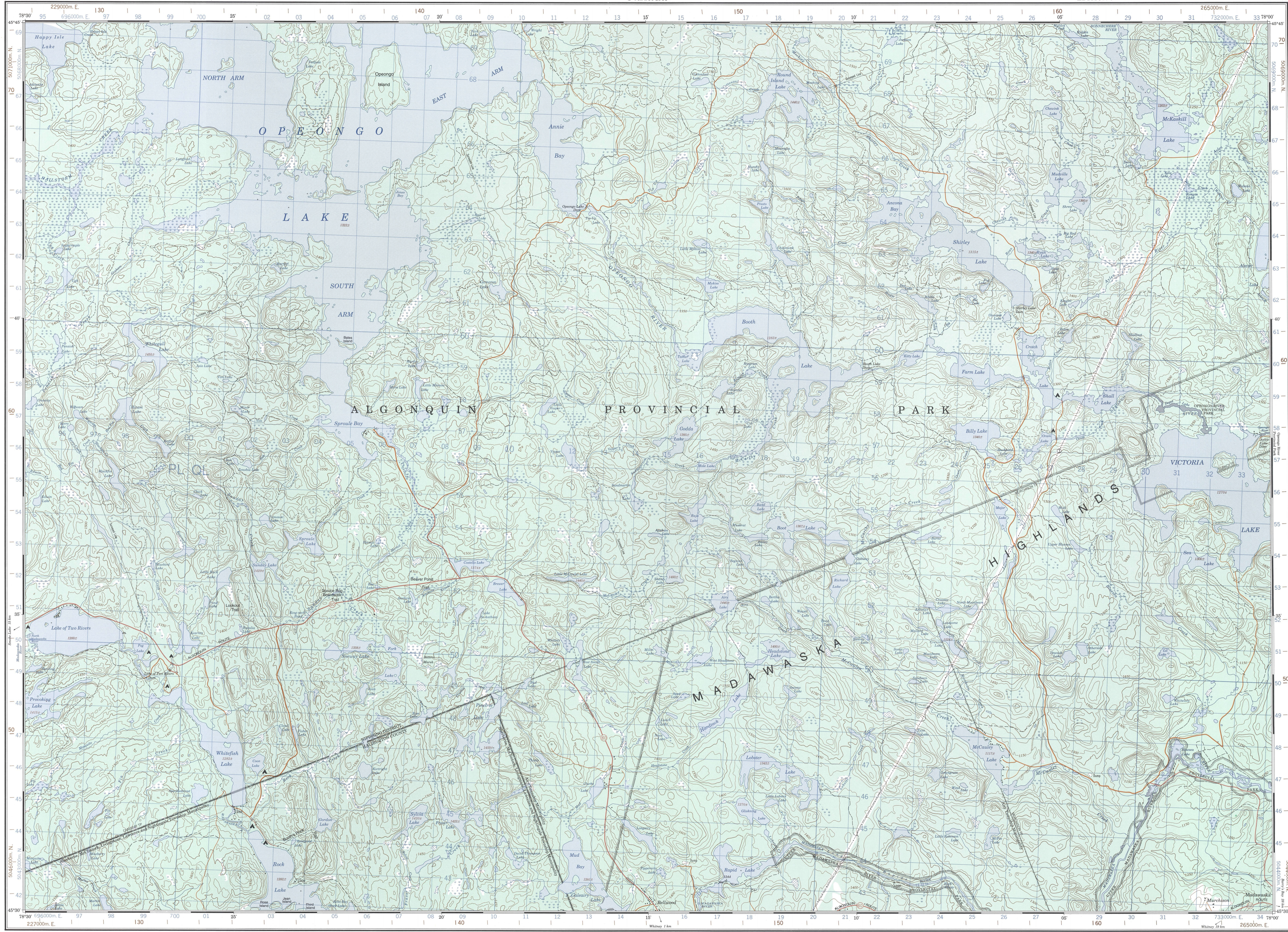
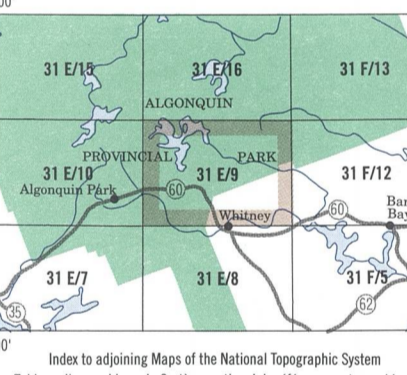
REFERENCE POINT
POINT DE RÉFÉRENCE: CHURCH - ÉGLISE

EASTING: Read number on grid line immediately left of point.
ESTIMATION: Move to centre of the line in quadrangle immediately to right of point.
Estimate tenth of a square from this line nearest to point.
Estimate in tenths of a square from centre of line to right of or direction of:

NORTHING: Read number on grid line immediately below point.
ESTIMATION: Move to centre of the line in quadrangle immediately to above of point.
Estimate tenth of a square from this line nearest to point.
Estimate in tenths of a square from centre of line to right of or direction of.

GRID REFERENCE: 175948
REFERENCE AU QUADRILLAGE: 175948

Measure centre grid reference 100 000 metres.
La distance est comprise à la suite par un 100 000 mètres.



PRODUCED BY THE CANADIAN CENTRE FOR MAPPING
NATURAL RESOURCES CANADA INFORMATION CURRENT AS
OF 1994. PUBLISHED 1994.

COPIES MAY BE OBTAINED FROM THE CANADA MAP OFFICE,
OTTAWA, OR YOUR NEAREST MAP DEALER.

© 1996. HER MAJESTY THE QUEEN IN RIGHT OF CANADA.

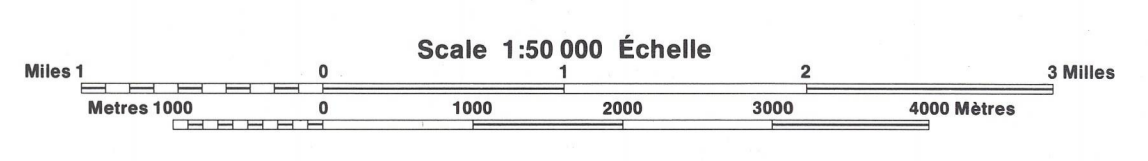
SOURCES:
Geodesic Survey Division
Bench marks, horizontal survey measurements and coordinate conversion

Roads:
hard surface
hard surface
loose or stabilized surface, all weather
loose surface, dry weather
stabilized/unstabilized road
vehicle track
rail, cut line or portage

Routes:
non-motorized dur.
motorized dur.
gravel, aggregate, loose season
de gravel, temps sec.
chemin de terre
sentier, portage ou portage

FOR COMPLETE REFERENCE SEE REVERSE SIDE
POUR UNE LISTE COMPLÈTE DES SIGNES, VOIR AU VERSO

OPEONGO LAKE
ONTARIO



CONVERSION SCALE FOR ELEVATIONS
Mètres 50 100 150 200 250 300 350 400 450 500 550 600 650 700 750 800 850 900 950 1000
Feet 100 200 300 400 500 600 700 800 900 1000

ÉCHELLE DE CONVERSION DES ALTITUDES
300 Mètres
1000 Pieds

SOURCES:
Divisions de levés géodésiques
Réseau de nivellement, données altimétriques et conversion de coordonnées

ÉTABLI PAR LE CENTRE CANADIEN DE CARTOGRAPHIE
EN 1994. PUBLIÉE EN 1996.

CES CARTES SONT EN VENTE AU BUREAU DES CARTES DU
CANADA, OTTAWA, OU CHEZ VOS VENDEURS DE CARTES.

© 1996. SA MAJESTÉ LA REINE DU CANADA.

We welcome your comments.
Just phone us at 1-800-465-MAPS.

Nous apprécions vos commentaires.
Téléphonez-nous au 1-800-465-6277.

