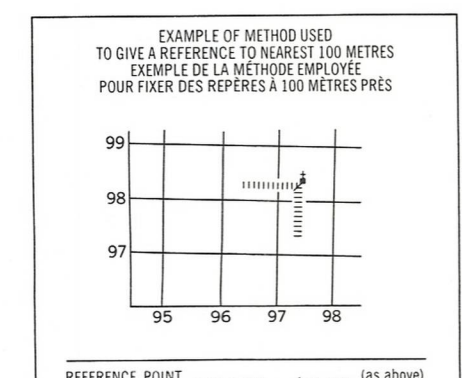
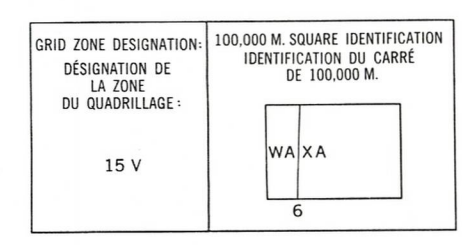
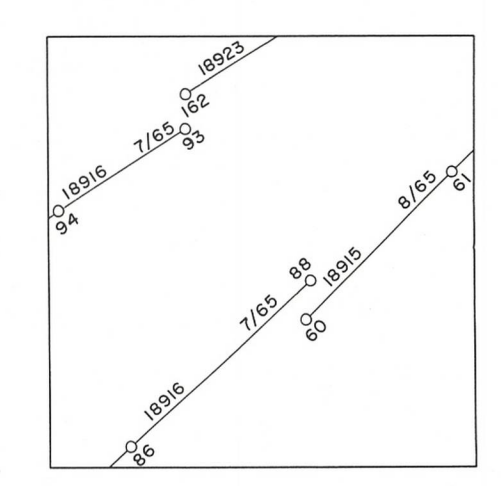


Military users, refer to this map as: SÉRIE A 701 SÈRE MAP 55 0/7 CARTE ÉDITION 1 MCE

LEGEND - LÉGENDE

- ROADS AND RELATED FEATURES**
 - HARD SURFACE, ALL WEATHER
 - LOOSE SURFACE
 - CART TRACK, WINTER ROAD
 - TRAIL, CUTLINE, PORTAGE
 - BUILT UP AREA
 - RAILWAY, SIDING, STATION, STOP
 - BRIDGE
 - SEAPLANE BASE, ANCHORAGE
- LANDMARK FEATURES**
 - HOUSE, BARN
 - CHURCH, SCHOOL
 - POST OFFICE
 - HISTORICAL SITE
 - TOWERS, FIRE, RADIO
 - WELL, OIL, GAS
 - TANK, OIL, GASOLINE, WATER
 - TELEPHONE LINE
 - POWER TRANSMISSION LINE
 - MINE
 - CUTTING, EMBANKMENT
 - GRAVEL PIT
- BOUNDARIES AND CONTROL**
 - INTERNATIONAL, PROVINCIAL, COUNTY, DISTRICT
 - TOWNSHIP, PARISH - SURVEYED, UNSURVEYED
 - MUNICIPALITY
 - INDIAN RESERVE, PARK, ETC.
 - HORIZONTAL CONTROL POINT
 - BENCH MARK
 - SPOT ELEVATION, ELEVATION APPROXIMATE
- DRAINAGE AND RELATED FEATURES**
 - STREAM, SHORELINE, INDEFINITE
 - DIRECTION OF FLOW
 - LAKE, INTERMITTENT
 - INUNDATED, FLOODED LAND
 - MARSH OR SWAMP (WOODED)
 - DRY RIVER BED WITH CHANNELS
 - SAND, ABOVE, IN WATER
 - STRING BOG
 - TUNDRA PONDS, POLYGONS
 - RAPIDS
 - FORESHORE FLATS
 - ROCK
 - DAM
 - WHARF
 - DITCH
- RELIEF FEATURES**
 - CONTOURS
 - APPROXIMATE CONTOUR
 - DEPRESSION
 - ESKER
 - PINGO
 - SAND, SAND DUNES
 - PALSA BOG
 - WOODED AREA



| | | |
|---------|---------|--------|
| 55 O/11 | 55 O/10 | 55 O/9 |
| 55 O/6 | 55 O/7 | 55 O/8 |
| 55 O/3 | 55 O/2 | 55 O/1 |

The 1972 MAGNETIC BEARING is 12° 32' 37" (min) WEST OF GRID NORTH
 LA REPERE MAGNETIQUE en 1972 est 12° 32' 37" (min) OUEST DU NORD DU QUADRILLAGE
 GRID NORTH is 2° 01' (36 miles) EAST OF TRUE NORTH
 NORD DU QUADRILLAGE est 2° 01' (36 miles) à l'est du NORD VÉRITABLE

EXAMPLE OF METHOD USED TO DERIVE REFERENCE POINTS IN METERS
 EXEMPLE DE LA MÉTHODE EMPLOYÉE POUR FIXER DES REPERES À 100 MÈTRES

REFERENCE POINT CHURCH - ÉGLISE (31 meters (31 meters))

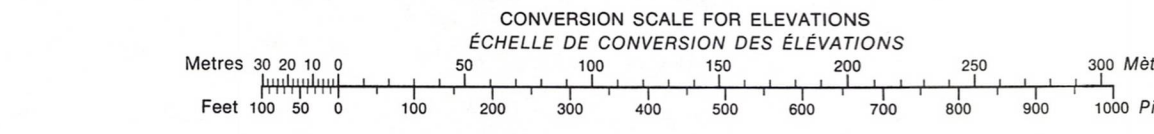
EASTING: Road number on grid line immediately to left of point
 LONGITUDE: EST: Note the chiffre de la ligne de quadrillage immédiatement à gauche du repère.
 Estimate tenths of a square from this line eastward to point.
 Estime le nombre de dixièmes de carré entre cette ligne et le repère en direction est.

NORTHING: Road number on grid line immediately below point
 LATITUDE: NORD: Note the chiffre de la ligne de quadrillage immédiatement en-dessous du repère.
 Estimate tenths of a square from this line northward to point.
 Estime le nombre de dixièmes de carré entre cette ligne et le repère en direction nord.

GRID REFERENCE SAMPLE
 ÉCHELLE DU QUADRILLAGE: 579984

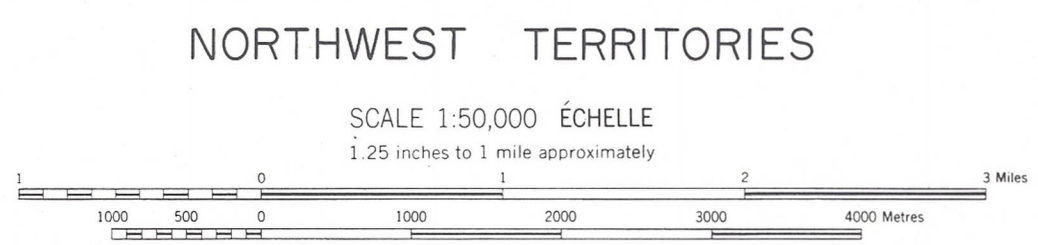
Note: entire grid reference 58000 meters (about 60 miles)
 La référence entière comprise est 58000 mètres (environ 60 miles)

ONE THOUSAND METRE
 UNIVERSAL TRANSVERSE MERCATOR GRID
 ZONE 15
 QUADRILLAGE DE MILLE MÈTRES
 UNIVERSSEL TRANSVERSE DE MERCATOR



7043000
 5990000

PRODUCED BY SURVEYS AND MAPPING BRANCH,
 DEPARTMENT OF ENERGY, MINES AND RESOURCES,
 OTTAWA, 1972, FROM PHOTOGRAPHS TAKEN IN 1965
 CONTOUR INTERVAL 25 FEET



ÉTABLI PAR LA DIRECTION DES LEVÉS ET DE LA
 CARTOGRAPHIE, MINISTÈRE DE L'ÉNERGIE, DES
 MINES ET DES RESSOURCES, OTTAWA, EN 1972,
 D'APRÈS DES PHOTOGRAPHIES PRISES EN 1965
 EQUIDISTANCE DES COURBES PRISSES EN 25 PIEDS

7044000
 5990000

55%
 EDITION 1