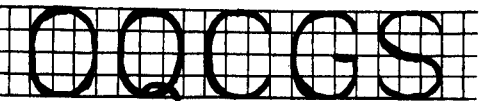
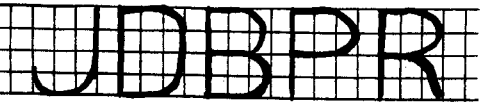
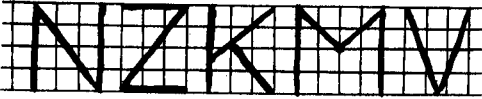
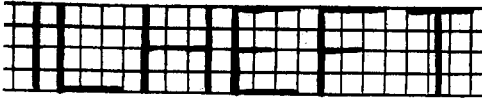


4. (a) **Practice work.** Practise horizontal and vertical brush strokes in color. (b) Upon  $4\frac{1}{2}$ "x6" paper rule an oblong with double lines a quarter of



an inch or less apart. Practise painting a color within these lines to form a band decoration suitable for a purse (to be made later). (c) Review.

### Grade III

Use  $4\frac{1}{2}$ "x6" manilla paper unless otherwise directed. All work should bear pupil's name, school and grade at lower left-hand corner. Each child should have a ruler.

1. (a) Oral review lesson with color chart on primary and secondary (standard) colors, with reference to tints of the same. (b) Practice lesson to illustrate the production of a standard color and a tint. (c) Review with another color.

2. (a) Teach terms, horizontal, vertical, oblique, and angle. (b) Brush work exercise on horizontal vertical and oblique lines. (c) Review terms as above, and measurements on ruler— inches and half inches.

3. (a) **Special Booklet:** Fold a sheet of printer's paper lengthwise down the centre for booklet cover. On one side of the paper set off inch spaces on the long edges. On the short edges set off spaces of one-half inch and one inch alternately. Rule horizontal and vertical lines from point to point to form a checked pattern. (b) Shade portions with ruled strokes to bring out the pattern. (c) Construct a booklet for spelling, using printer's paper folded lengthwise and the above cover.

4. (a) **Blotter-pad with corners.**— (a) Measure, fold, and cut four two-inch squares of manilla paper. Crease on diagonals on one side. Turn paper over and crease on one diameter. Open paper and bring ends of diameter together so that two triangles result. Press triangles together to make corner for blotter. (b) With portfolio card 8"x4" and a blotter of same size, make a blotter-pad, pasting the corners on the under side. (c) Decorate the corners.

### Grade II

Use  $4\frac{1}{2}$ "x6" manilla paper except where otherwise directed. All work should bear pupil's name, school and grade upon back of paper.

1. (a) Exercise on the making of a tint. Make a pale blue wash on  $4\frac{1}{2}$ "x6" paper. (b) Free arm movement or brush work exercise. (c) Make a green wash.

2. (a) Paint blue and green washes on same sheet for landscape. See Graphic Drawing Book No. 1, pages 19, 20. (b) Paint yellow or orange sky with green or brown land. (c) Review either of the above.

3. (a) Free arm movement or brush work exercise. (b) **Practice work.** Fold  $4\frac{1}{2}$ "x6" paper into sixteen oblongs. Tint the four central ones. (c) Dictate the decoration of the ends or centre of above painted oblong for a rug.

4. (a) With brush and color tint an oblong shape for a rug, without creasing the paper or using pencil guide lines. (b) Decorate ends or centre with an original design. (c) Review.