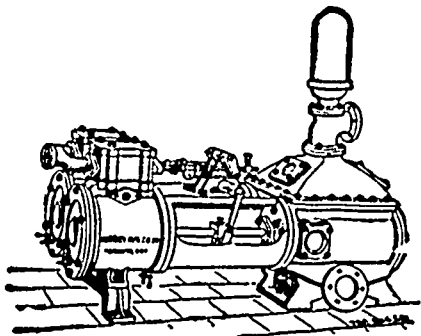


PUMPING MACHINERY.



DUPLEX OR SINGLE

WRITE FOR PRICES.

NORTHEY M'FG CO.
LIMITED.

TORONTO.

CATALOGUE ON APPLICATION.

The "Traveller's Index" and Monthly Diary, the first issue of which has just appeared, is a neat and handy little guide to steamship and transportation lines throughout the province. The arrangement of the tables and data is convenient, especially that of the Diary which shows the departure and arrival of the 'Frisco, Oriental and Australian steamers for the month. Published under the auspices of Mr. A. M. Jones, it ought to be received with appreciation and welcomed as a source of reliable information.

The following vessels have been chartered for the Alaska salmon business to be ready after April 1st, 1895:

Bark Chas. B. Kenny,	for Bristol Bay.
Bark Alex. McNeill,	"
Ship Raphael,	"
Ship Llewellyn J. Morse,	"
Schooner Louis,	"
Bark Highland Light,	for Cooks Inlet.
Ship Geo. Skolfield,	" Alaska.
Bark Electra,	" "
Bark Jas. A. Borland,	" "
Ship Mermon,	" "
Bark Nicholas Thayer,	" "
Bark Will W. Case,	" "
Bark Ferris S. Thompson,	for Karluk.

VESSELS IN PORT.

(March 4, 1895.)
VICTORIA.

Am. bark Wrestler, 447 tons.
Br. ship Routenbeck, 860 tons, Capt. Russell, arrived Feb. 15, from Honolulu. Seeking, Robt. Ward & Co., Ltd., agents. Chartered to load lumber at Port Blakely.

COWICHAN.

Am. bark Melrose, 914 tons, Capt. Peterson, arrived February 21. Loading mining props for Santa Rosalia.

VANCOUVER.

German bark Artemis, 1,479 tons, Capt. Klock, arrived February 2. Loading lumber for Valparaiso, for orders.

Br. bark Carnmoney, 1,255 tons, Capt. Smyth, arrived January 15, loading lumber at Hastings Mill, for United Kingdom.

Br. ship Olivebank, 2,617 tons, Capt. Petrie, arrived March 1, loading lumber for South Africa.

Br. bark Glamvior, 1,081 tons, Capt. Williams, arrived March 1, loading lumber at Hastings Mill for U. K.

Am. ship Sterling, 1,663 tons, Capt. Wheldon, arrived March 1, with 900 tons Pennsylvania coal. Evans, Coleman & Evans consignees. To load lumber at Hastings Mill.

WESTMINSTER.

Am. schr. Falcon, 196 tons, Capt. Chalmers, arrived Feb. 28, load lumber at Brunette Mills for San Francisco.

Am. schr. Glendale, 227 tons, Capt. Jorgenson, arrived Feb. 28, loading lumber for San Francisco.

Haw. bark Leahi, 557 tons, Capt. Neilson, arrived March 3, loading lumber at Brunette Mills for California.

NANAIMO.

Am. ship India, 1,230 tons, Capt. Merriam.

Am. ship Elwell, 1,461 tons, Capt. Ryder.

WELLINGTON SHIPPING.

Am. ship Yosemite, 1,104 tons, Capt. Fullerton.

Am. ship Oriental, 1,525 tons, Capt. Parker.

Am. bark Raphael, 1,465 tons, Capt. Greenleaf.

UNION SHIPPING.

Am. ship Glory of the Seas, 2,109 tons, Capt. Freeman.

RECAPITULATION.

Ports.	No.	Tonnage
Victoria.....	2	1,307
Cowichan ..	1	914
Vancouver.....	5	8,128
Nanaimo.....	6	8,991
Westminster.....	3	980
Total.....	17	20,333
Previous week.....	11	14,711
Correspond'g week last year.....	11	12,751
" 1894.....	18	25,926
" 1892.....	10	22,543

FOREIGN COAL SHIPMENTS.

The following are the New Vancouver Coal Co's shipments for the week ending March 2:

Date.	Vessel and Destination.	Tons.
25	Holyoke, str., Port Townsend.....	26
26	Sea Lion str., Port Townsend.....	40
26	Holyoke, str., Port Townsend.....	32
27	Jabez Howes, ship, San Francisco..	2,521
28	Peter Jobsen, str., San Diego.....	4,705
1	Wanderer, str., Port Townsend....	61
Total.....		7,385

FREIGHTS.

Grain rates are practically unchanged and as crop prospects in California are excellent, owners are not inclined to make concessions. Freighters are quoted at 23s. 9d. for large carriers and 25s. for small, with the usual options.

Lumber freights from British Columbia or Puget Sound are quoted as follows: Valparaiso for orders, 42s 6d; Sydney, 32s 6d; Melbourne, direct 42s 6d; Port Pirie, direct 40s; United Kingdom, calling at Cork for orders, 65s; Shanghai 59s; Tientsin 55s, nominal; South Africa, 63s 9d nominal.

Coal freights from Nanaimo or Departure Bay to San Francisco, \$2.00 to \$2.25, to San Diego or San Pedro, \$2.50 to \$2.75, all more or less nominal.

Mr. A. Dick, Inspector of Mines, has given the following official returns in connection with the coal industry in this Province for 1894:

Output of coal.....	1,012,953	14.20
On hand January 1, 1894 ..	19,041	15-2
Exported ..	827,612	10-20
Home consumption.....	165,775	18-25
On hand January 1, 1895.....	38,579	
Total hands employed.....	2,929	

Of the last item 494 were Chinese.

A woman in a western Ontario town purchased a new-frangled kettle from a pedlar. In the evening she showed it to her husband, a hardware dealer, who told her he had the same thing in his store for half the price she paid. 'Well,' she said, 'why don't you advertise? Nobody knows what you have for sale.' This skit has a local application.

MEMORANDA.

Vessels on the way to British Columbia Ports.

- A--Via Suva and Honolulu, February 31.
- B--Reported chartered for lumber to U. K.
- C--Via Yokohama March 1.
- D--Reported chartered for coal between Nanaimo and San Francisco.
- E--To load lumber at Brunette Mills, for San Francisco.
- F--Chartered to load lumber.
- G--Via San Francisco. Chartered to load props for Santa Rosalia.
- H--Via Yokohama, March 9.
- I--Spoken Oct. 27, lat. 45 N. long. 8 W. November 3, lat. 48 N. long. 10 W. December 3, lat. 11 S. long. 33 W.
- J--November 21, passed Isle of Man, Dec. 25 spoken lat. 16 S. long. 33 W.
- K--Chartered to load lumber for California.
- L--January 28, damaged by collision at Mochi, Japan, repairing at Kobe, via Yokohama, March 1.
- M--Dec 28 passed Scilly. Spoken January 1, lat. 25° N. long. 11° W. January 23--lat. 21° S. long. 39° W.
- N--Arrived Samarang, January 9 for Vancouver.
- O--To sail March 20, via Yokohama, March 29.
- P--Chartered to load lumber.