

De'aney crescent to Wyndham street, brick, \$2,760; Gloucester street, Yonge to Church, tar macadam, \$5,880; St. Lawrence street, King to Eastern avenue, macadam, \$5,010. Concrete sidewalks—St. Patrick, from Denison to Casimir, \$609; Gould, from Yonge to Victoria, \$445; Cameron place, from Vanauley to a point 163 feet east, \$136; Shannon, from Ossington to Dovercourt, \$1,239; Euclid avenue, from B'oor to Follis, \$2,000; Concord avenue, from Hepbourne to B'oor, \$643; Burton avenue, from Palmerston to Euclid, \$428; Barton avenue, from Euclid to Manning, \$386; Queen, from B'y to a point 287 feet east, \$715; Queen, from York to Simcoe, \$1,454; Avenue road, from Davenport to Chicora, \$532; Avenue road, from Dupont to north city limit, \$1,324; St. Joseph, from St. Nicholas to St. Vincent, \$397; Howland, from Wells to Dupont, \$843; Berkeley, from Wilton to Gerrard, \$886; Walton, Terauley to Elizabeth, \$264; E m, Sherbourne to Dunbar, \$328. — Building permits have been granted as follows: W. A. Murray & Co., alterations and additions, 14 King street east, cost \$10,000; G. C. Craig, two brick and stone dwellings, B'oor street, near St. Clarens avenue, cost \$3,200; Charles Moulds, two storey brick store and dwelling, corner Royce and Perth avenues, cost \$2,500; Donald McArthur, four two-storey and attic brick and stone dwellings 36 to 42 McGill street, cost \$10,000; B. G. Austin, two-storey stone and brick residence, 339 Margueretta street, cost \$1,800, Eckardt Casket Company, alterations to warehouse, 66 Esplanade street west, cost \$1,700.

CONCRETE CONSTRUCTION.

Mr. H. F. Duck has called our attention to certain errors in our report of his remarks on concrete construction made at the recent meeting of the Engineers' Club. We therefore publish below a revised report:

That portion of the first paragraph, after the word "concrete," 13th line, and prior to the word "Mr" 25th line, should be eliminated, and the following substituted therefor, viz:—

"In his opinion care should be taken in the proportions used of cement, sand and broken stone, and in order to ascertain these proportions, the voids in the broken stone and in the sand should be calculated by some correct method, one of which he gave. By this particular method, with stone broken in size from two inches down

to say one quarter inch, with graded, clean, sharp sand, the proportions would be about 1, 3 and 7 of cement, sand and stone respectively, thus forming a basis upon which to ascertain the proper proportions for the special class of concrete work desired. In itself, the proportion of 1, 3 and 7 if well mixed and tamped in place would make a good concrete for filling purposes. Facing concrete for dams and work of like character should be in much richer proportions and only the best quality of hard graded sand should be used.

(Continued on page 6.)

DEBENTURES

Municipalities contemplating the issue of Debentures will find it to their advantage to communicate with

G. A. STIMSON & CO.

Investment Dealers

24 and 26 King St. W. TORONTO

Pittsburgh Testing Laboratory,

LIMITED

Inspecting and Metallurgical

Engineers and Chemists.

SPECIALTIES: Inspection of RAILS and all material for BRIDGES, BUILDINGS, and other structures, cast iron pipe, wood and steel railroad cars.

MANUFACTURE AND ERECTION.

Expert examination and reports, chemical analyses and physical tests of all kinds. Cement Testing.

146 St. James Street, Montreal, P. Q.

H.F. STRICKLAND

ELECTRICAL ENGINEER

SPECIALTY

Reports, Valuations, &c. for negotiations relative to Municipal Ownership.

35 ADELAIDE ST. E., TORONTO

PHONE, MAIN 1838.

The DeLano-Osborn Engineering Co., Limited
506 Manning Chambers, Toronto.

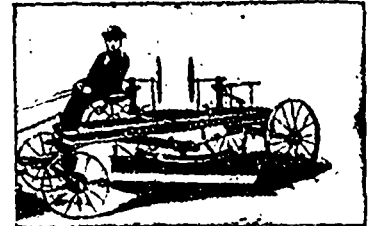
CONSULTING AND DESIGNING ENGINEERS.

Consultations, Plans, Specifications and Supervisence for Bridgework, Steel Building Frames, Portland Cement Plants, Power and Miscellaneous Plants, Water Power Development, Electric Railways, etc.

Inspectors of Structural Material and of Railway Equipment.

THE STEEL "CHAMPION" IS THE KING OF GRADERS

"CHAMPION" Road Machines are now in use in every Province of Canada.



Address for 20th Century Catalogue

The Good Roads Machinery Co., Limited
(Late Killey-Beckett Engine Works)
144 YORK STREET - HAMILTON, ON

JOSSON CEMENT .. Manufactured at. NIEL ON RUPELL

Is the Highest Grade Artificial Portland Cement and the Best for High Class Work. Has been used largely for Government and Municipal Works.
TO BE HAD FROM ALL CANADIAN DEALERS

C. I. de Sola, Manager in Canada :: 180 St. James Street, MONTREAL



"Lehigh"

Portland Cement

Capacity 9,000 Barrels every Day in the Year.

For Sidewalks and all other work requiring the highest quality Portland Cement Used by the U.S. Government and the largest contractors and users of Portland Cements in the United States.

Absolutely the most popular Cement in Canada on account of its merits.

For Prices, etc., address—

THORN CEMENT CO. - Buffalo, N. Y.

WARREN'S BITULITHIC PAVEMENT

IS
THE BEST FORM
OF

Warren's Bituminous
Macadam Waterproof
Pavement

Write for Circulars.

THE WARREN BITUMINOUS
PAVING CO., LIMITED.

164 Bay Street, Toronto, Ont.
P. O. Box 325, London, Ont.

- * Bitulithic has the unqualified endorsement of experts
- * It combines the good qualities of the best forms of pavement.
- * The stone takes the wear of traffic.
- * Unexcelled for pleasure driving or for heavy teaming.
- * Less noisy than any other pavement.
- * It has been successfully laid on hills up to 12% grade.
- * The cement used will not rot or disintegrate.
- * Horses will not slip on it.
- * It enhances property values.
- * Cheapness is merely incidental to other good qualities.