

Ford, Ruthven & Co.,
26 PITT STREET, SYDNEY,
AUSTRALIA.

WOOL BUYERS on Commission

Letters of Credit must accompany orders.

Bankers:—Bank of Australasia Sydney.

GEO. PATTINSON & CO.

PRESTON, - ONTARIO.

Manufacturers of

FINE AND MEDIUM **TWEEDS**

Guelph Woolen Mill Co.,

QUELPH, ONT. LIMITED.

Manufacturers of

Underwear, Hosiery, Wheeling, Fingering and Worsted Yarns, Eiderdown Flannel, Etc.

Selling Agents—Donald Fraser, Montreal.
E. H. Walsh & Co., Toronto.

PENMAN MANUFACTURING CO.

PARIS, ONT. LIMITED.

Manufacturers of

Hosiery, Shirts, Drawers, Glove Linings and Yarns.

Selling Agents—D. Morrice, Sons & Co.,
Montreal and Toronto.

ROSAMOND WOOLEN CO.

ALMONTE, ONT.

Fine Tweeds, Cassimeres, and Fancy Worsted Suitings and Trouserings.

JOHN HALLAM
TORONTO.

WHOLESALE DEALER IN
DOMESTIC and FOREIGN **WOOLS**
Sumac, Japonica, etc.

Reproductions Made for Eight Cents per Square Inch.



Half Tones Made Direct from Photos.

It Leads Them All.

THE OLDEST,
THE LARGEST,
THE SAFEST,
THE CHEAPEST,

CANADIAN LIFE INSURANCE COMPANY IS

THE CANADA LIFE ASSURANCE COMPANY.

CAPITAL AND FUNDS OVER \$13,000,000.

Write for Prospectus.

A. G. RAMSAY,
PRESIDENT.

GEO. A. & E. W. COX,
Managers for Toronto
and Eastern Ontario.

PHENIX ASSURANCE COMPANY, OF LONDON, ENGLAND.

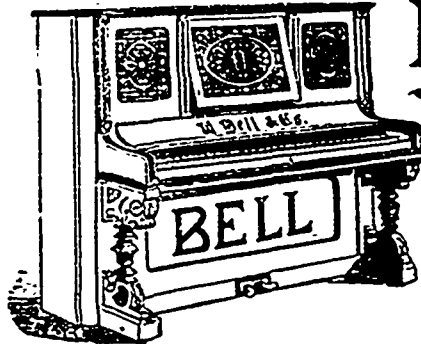
ESTABLISHED 1782.

AGENCY ESTABLISHED IN CANADA, 1804.

PATERSON & SON, GENERAL AGENTS FOR THE DOMINION,

35 St. Francois Xavier Street, MONTREAL.

LEWIS MOFFATT & CO., Agent at Toronto.



BELL HIGH-GLASS INSTRUMENTS

USED AND RECOMMENDED BY

LEADING MUSICIANS.

Send for Catalogue.

THE BELL ORGAN AND PIANO CO.

(LIMITED)

QUELPH, - ONTARIO.



CROSBY STEAM GAGE AND VALVE CO.

Sole Proprietors and Manufacturers of Crosby Pop Safety Valves for all kinds of Boilers. Water Relief Valves including the Underwriter, which is fully approved by the Associated Factory Mutual Insurance Companies; Crosby Steam Engine Indicators, with Sar gent's Electrical Attachment; Crosby Improved Steam Gages, Recording Gages and Patent Gage Testers. Original Single Bell Chime Whistles.

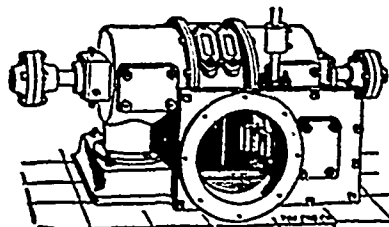
BRANDEN PATENT PUMP VALVES
CLARK'S LINEN FIRE HOSE AND ADJUSTABLE COUPLINGS

All Kinds of Pressure and Vacuum Gages used in the Various Arts

Gold Medal Paris Exposition, 1889
Ten Highest Awards Columbian Exposition, 1893

Main Office and Works..... BOSTON, MASS., U.S.A.
Branch Offices at New York, Chicago, and London, Eng.

Underwriter



"LITTLE GIANT" TURBINE

....FOR ALL PURPOSES....

HORIZONTAL AND VERTICAL.
BUILT IN 44 SIZES.

We guarantee a higher percentage of power from water used than any other wheel on the market.

Water Wheel Governors, Machine Dressed Gearing, Pulleys, Shafting and Bearings.
Catalogue and Gear List mailed on application. Correspondence Solicited.

J. C. WILSON & CO., - - GLENORA, ONT.