

(Continued from Page 4)

R. I. Reds, cock—J. L. Brown, Jac Bilger.
 Reds, cockerel—J. L. Brown.
 Reds, hen—J. Bilger.
 Reds, chick—J. L. Brown 1st and 2nd.
 Buff Orpington, cock—A. J. Dietz.
 Buff Orpington, cockerel—A. J. Dietz.
 Buff Orpington, hen—A. J. Dietz.
 Buff Orpington, chick—A. Dietz.
 Any other Game, cock—H. Vollick.
 Any other Game, hen—H. Vollick.
 White Wyandotte, cock—H. Vollick 1st and 2nd.
 White Wyandotte, cockerel—J. A. Goetz, J. Douglas.
 White Wyandotte, hen—H. Vollick J. Douglas.
 White Wyandotte, chick—J. A. J. Douglas.
 Other Wyandotte, cock—Aug. Weiler.
 Other Wyandotte, cockerel—J. Weiler, 1st and 2nd.
 Any other Wyandotte, hen—Aug. Weiler.
 Black Spanish, hen—Lobsinger Bros. 1st and 2nd.
 Black Minorca, cock—Jonas Vollick N. Durrer.
 Black Minorca, cockerel—J. L. Brown, Jonas Vollick.
 Black Minorca, hen—J. Bilger, Jonas Vollick.
 Black Minorca, chick—Jonas Vollick, J. L. Brown.
 R. C. Black Minorca, cockerel—N. Durrer.
 B. C. Black Minorca, chick—Nick Durrer.
 S. C. Brown Leghorn, cockerel—A. Schnurr, A. J. Dietz.
 S. C. Brown Leghorn, hen—H. Vollick J. A. Goetz.
 S. C. Brown Leghorn, chick—A. Schnurr, A. J. Dietz.
 S. C. White Leghorn, cock—H. Vollick 1st and 2nd.
 S. C. White Leghorn, cockerel—Geo. Fink, Mrs. C. Schnurr.
 S. C. White Leghorn, hen—J. L. Brown, H. Vollick.
 S. C. White Leghorn, chick—H. Vollick, B. Goetz.
 S. C. Buff Leghorn, cock—A. J. Dietz.
 S. C. Buff Leghorn, cockerel—A. J. Dietz.
 S. C. Buff Leghorn, hen—A. J. Dietz.
 S. C. Buff Leghorn, chick—A. J. Dietz.
 S. C. Hamburg, cock—J. L. Brown S. C. Hamburg, cockerel—J. L. Brown 1st and 2nd.
 S. C. Hamburg, hen—J. L. Brown 1st and 2nd.
 S. C. Hamburg, chick—J. L. Brown 1st and 2nd.
 Ancona, hen—J. Bilger.
 Rouen Ducks—Geo. Haines.
 White Ducks—A. J. Dietz, Frank Lobsinger.
 Grey Geese—Geo. Haines, Amand Schnurr.
 White Geese—H. Vollick, Wm. Weber.
 Rouen Ducklings—Geo. Fink.
 White Ducklings—A. J. Dietz, F. Lobsinger.
 Grey Goslings—Ph. Hoffarth, A. Schnurr.
 White Goslings—A. J. Dietz, Wm. Weber.
 Turkey Chicks—A. Schnurr.
 Fantail Pigeons—H. Miller 1st and 2nd.
 Any other Pigeons—A. J. Dietz.

DOMESTIC SCIENCE
 30 lb. Butter—Mary Bell, A. Berberich.
 10 lbs. Butter—J. Juergens, Mary Bell, Wm. Weber.
 5 lbs. Butter—Mary Bell, A. Taylor, J. Juergens.
 5 lbs. Prints—Mary Bell, Wm. Reddon, Jonas Vollick.
 1 lb. Print—Mary Bell, J. Juergens.
 Home-made Cheese—A. Berberich, J. Juergens.
 Home made Lard—Wm. Weber, Geo. Reinhart.
 Home made Soap—H. Miller, Wm. Weber.
 Eaton's Special, Butter—M. Bell.
 Extracted Honey—A. Taylor.
 Maple Syrup—J. L. Tolton, A. Taylor.
 Maple Sugar—Henry Schill, J. L. Tolton.
 White Shell Eggs—Geo. Haines, J. Bilger.
 Brown Shell Eggs—Ph. Hoffarth, N. Durrer.
 Dressed Chickens—Ph. Hoffarth, Mrs. C. Schnurr.
 Dressed Ducks—A. Berberich.
 Head Cheese—Mary Bell, August Weiler.
 Best 1 doz. Eggs—Geo. Haines.
 Loaf White Bread—Hugh Douglas, A. Schmidt, Mary Bell.
 Brown Bread—M. Dippel, August Weiler, Geo. Haines.
 Nut Bread—A. Schnurr, A. Taylor A. Berberich.
 Light Tea Biscuits—F. Lobsinger, Jno. Vollick, Wm. Weber.
 Yeast Buns—A. Taylor, Mrs. C. Schnurr, Mary Bell.
 Graham Gems—M. Dippel, Jno. Vollick, Hugh Douglas.
 Sugar Cookies—M. Dippel, A. Taylor, Mary Bell.
 Ginger Cookies—Mary Bell, Wm. Weber, M. Dippel.
 Oatmeal Cookies—M. Dippel, Mary Bell, A. Taylor.
 Short Cake—Mary Bell, Jno. Vollick, A. Berberich.
 Sponge Cake—Mary Bell, M. Dippel, A. Berberich.
 Ginger Bread—Wm. Reddon, A. Berberich, J. Bilger.
 Johnny Cake—J. Bilger, A. Schnurr Mrs. C. Schnurr.
 Light Layer Cake—A. Schnurr, B. Schmalz, A. Berberich.
 Dark Layer Cake—N. Durrer, Geo. Fink, Bert Schmalz.
 Fruit Cake—A. Berberich, Geo. Reinhart, Wm. Weber.
 Fried Cakes—A. Taylor, Geo. Reinhart, Mrs. C. Schnurr.

Cheese Tarts—Aug. Weiler, Hugh Douglas, Wm. Reddon.
 Apple Pie—Wm. Reddon, A. Schnurr, Geo. Reinhart.
 Pumpkin Pie—Jno. Vollick, Hugh Douglas, A. Taylor.
 Lemon Pie—M. Dippel, Wm. Reddon, N. Durrer.
 Meat Pie—Mary Bell, Jno. Vollick, Wm. Weber.
 Variety Baking—Mrs. C. Schnurr, J. Bilger, Mary Bell.
 Candy—J. Mittleholtz, E. V. Kalbfeisch, Wm. Weber.
 Sandwiches—Mary Bell, Bert Schmalz, J. L. Tolton.
 Workman's Dinner—Jac. Bilger, Mary Bell.

SPECIALS
 Bread from Manitoba Blend—Hugh Douglas, Mary Bell.
 Bread from Prairie Rose—Mary Bell, Philip Hoffarth.
 Bread from Prairie Pride—Hugh Douglas, Philip Hoffarth.
 Buns from Prairie Pride—Mrs. C. Schnurr.
 Apple Pie from Peerless Flour—H. Douglas.
 Jelly Roll from Peerless Flour—Mrs. C. Schnurr.

FRUITS & JELLIES
 Canned Raspberries—Geo. Reinhart, B. Schmalz.
 Canned Rhubarb—Mary Bell, Geo. Reinhart.
 Canned Apples—Jonas Vollick, A. Schnurr.
 Canned Pears—B. Schmalz, Wm. Weber.
 Canned Plums—Mrs. C. Schnurr, M. Dippel.
 Canned Cherries—B. Schmalz, M. Dippel.
 Pres. Strawberries—E. V. Kalbfeisch, A. Berberich.
 Pres. Citron—J. A. Goetz, Mary Bell.
 Pres. Peaches—M. Bell, Mrs. Brahler.
 Black Currant Jam—Geo. Reinhart, Herb Durrer.
 Raspberry Jam—Mary Bell, Hugh Douglas.
 Apple Jelly—Geo. Helwig, Jonas Vollick.
 Currant Jelly—A. Berberich, Geo. Helwig.
 Sauerkraut—Aug. Weiler, Mrs. C. Schnurr.
 Canned Tomatoes—Mary Bell, J. Juergens.
 Canned Corn—Jno. Juergens, A. Berberich.
 Canned Peas—Geo. Reinhart, A. Berberich.
 Canned Beans—Geo. Reinhart, A. Berberich.
 Catsup—M. Bell, Mrs. C. Schnurr.
 Mustard Pickles—A. Berberich, Mary Bell.
 Meat Relish—A. Schnurr, A. Berberich.

DOMESTIC MANUFACTURE
 Rag Mat—Mrs. C. Schnurr, Irene Shell.
 Floor Mat—Geo. Reinhart, Mrs. C. Schnurr.
 Quilt, Patched Cotton—Geo. Reinhart, Jonas Vollick.
 Quilt, Fancy—H. Miller, M. Dippel.
 Quilt, any other—Bert Schmalz, Mrs. Brohman.
 Comforter—J. A. Johnston, Aug. Weiler.
 Spread, French Knots—J. A. Goetz Irene Schell.
 Bed Spread, emb.—Geo. Horst.
 Fancy Bed Spread—Irene Schell, Mrs. Brohman.
 Cotton Dress—Mary Bell, Mrs. Julia Ball.
 White Apron—Mrs. J. Ball, Mary Bell.
 Child's Dress—Mrs. J. Ball.
 Work Apron—J. L. Tolton, Mrs. J. Ball.
 Knitted Sweater—M. Dippel, Mrs. J. Ball.
 Knitted Pullover—Geo. Reinhart.
 Shoulder Shawl—Geo. Reinhart.
 Course Socks—Geo. Reinhart, M. Dippel.
 Fine Socks—Geo. Reinhart, M. Dippel.
 Double Mitts—Henry Schill, Mary Bell.
 Fine Mitts—M. Dippel, Geo. Reinhart.

LADIES' WORK
 Eyelet Embroidery—Julia Ball, J. A. Goetz.
 French Embroidery—Julia Ball, M. Dippel.
 Roman Work—Julia Ball, Irene Schell.
 Conventional Emb.—M. Dippel, A. P. Scheffer.
 Venetian Relief—Julia Ball.
 Sunburst—M. Dippel.
 Modern Floral—M. Dippel.
 Modern Beading—Mrs. Ball, Bert Schmalz.
 Swedish Weaving—Mrs. Ball, M. Dippel.
 Tatting—Geo. Reinhart, Mrs. Ball.
 Drawn Thread Work—Mrs. Ball, Geo. Reinhart.
 Tatted Lace—Mrs. Ball.
 Filet Crochet—Mrs. Ball, Irene Schell.
 Braid Thread Lace—J. A. Goetz, M. Dippel.
 Thread Lace—Irene Schell, J. A. Goetz.
 5 Pieces—Irene Schell, B. Schmalz.
 Table Cloths—Mrs. Ball, Geo. Helwig.
 Tea Cloth, emb.—Irene Schell, Geo. Helwig.
 Tea Cloth, any other—Mrs. Ball, M. Dippel.
 1/2 Serviettes—Irene Schell, Mrs. Brohman.
 Table Mats—Mrs. Ball, Irene Schell.
 Table Dollies—M. Dippel.
 Dollies, any kind—Mrs. Ball, J. Bilger.
 Tea Cloth, any kind—Mrs. Ball.
 Tea Cloth, colored—Irene Schell, Mrs. Brohman.
 Luncheon Set, Emb.—M. Dippel, Mrs. Brohman.
 Luncheon Set, any other—Bert Schmalz.
 Lunch Set—J. Bilger, M. Dippel.
 Tray Cloths—Mrs. Ball, Bert Schmalz.

Here's The Radio You've Waited For

ROGERS

BATTERYLESS ^{A/C}



JUST PLUG IN—THEN TUNE IN

ONE thousand Radio Dealers, when asked what the public wanted in radio this year, answered: (1) Elimination of batteries; (2) Simplicity of installation and operation, and (3) Tone quality and volume. The new 1927 Rogers Batteryless Radio is the *only* Radio that embodies all of these features. They combine *total* elimination of batteries with extreme simplicity, exquisite tone quality and volume that can be regulated from a whisper to a roar. There are *fourteen* distinctive points in the 1927 Rogers, many of which can be found in a few high-priced radios, a few of which can be found in many radios, but *all of which* can be found in *no other radio in the world*. Yet the prices are very modest. To buy any radio without first seeing and hearing the new Rogers is but to cheat yourself and purchase regrets.

No Batteries The Rogers operates direct from any light socket on any alternating current. No chemicals; no charger; no attachments. You "Just Plug In—Then Tune In." The Rogers uses the raw current through its super-power unit that automatically regulates all voltages for A, B and C Circuits and takes care of all variations of line voltage after once installed. Not the slightest hum nor power noise can pass into the speaker. It costs about 4c a week to operate daily, and you get *uniform, everlasting power* from the day you plug in—forever more.

No Aerial In most homes the Rogers will function without any aerial whatever, either outside or built in loop—and with less disturbance than when an aerial is used. Except for occasional houses so constructed that an aerial is needed (as with ordinary radio sets), the Rogers can be installed and tuned in in 2 minutes 21 seconds.

Single Dial Control Combined with simplicity of installation is ease of operation. A single tuning dial, vernier control, with wave lengths indicated on the face of the dial, enables you to tune in station after station easily and quickly or locate any desired station at will. On August 26, 1926, in a Parkdale home in Toronto, 31 stations were tuned in and logged with one turning of the dial (never turning backwards) and without touching any other control on the set.

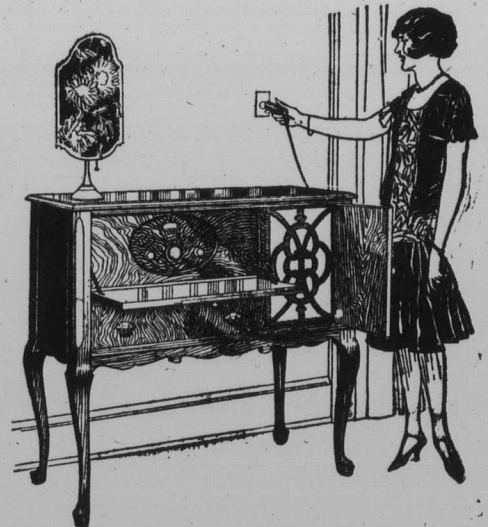
Exquisite Tone Quality Exceptional Volume By the addition of an A/C Power Tube the possible volume has been greatly increased and the quality of tone infinitely improved. The volume can be adjusted from a whisper to a roar by a turn of one knob, without cutting out or in any of the tubes. When you once hear the new Rogers you will marvel at its fidelity of tone reproduction on all instruments and voices.

Free Demonstration
 Added to the above are a dozen other points of advantage that combine to make the Rogers the one set that can give you all you hoped for in a Radio. If you are prepared to purchase a Rogers, providing it meets your expectations in every respect, we will install one in your home free of charge. You will be the judge. If it is all we say—and you are *totally* satisfied—payment can be made in cash or spread over three to twelve months for a slight charge.

The single-dial, batteryless sets are **\$275.00** for table model complete except for loud speaker (loud speakers \$25 to \$40).

\$395.00
 for Queen Anne Console Cabinet with built-in loud speaker.

Other Rogers A and B Batteryless Sets:
 Three tube table models **\$140.00** and **\$150.00**. (2-dial control).
 Five tube table models **\$210.00** and **\$220.00**. (3-dial control).



L. PLETSCH & SON

This is a Batteryless Year - Uniform Everlasting Power

Buffet Set—Mrs. Ball, Geo. Helwig.
 Centre Piece, white—Mrs. Ball, Irene Shell.
 Mrs. Brohman.
 Pillow Cases, emb.—Mrs. Ball, M. Dippel.
 Pillow Cases, any other—Irene Shell, J. A. Goetz.
 Sheet and Pillow Covers—Irene Shell, J. Bilger.
 Fancy Sheet—Irene Shell, Mrs. Ball.
 Day Slips, emb.—Mrs. Ball, Irene Shell.
 Hand Towels—J. Bilger, M. Dippel.
 Guest Towels—Mary Bell, M. Dippel.
 Towels, any work—J. Bilger, Geo. Helwig.
 Bath Towel and Face Cloths—J. Bilger, Mrs. Ball.
 Bath Towels—M. Dippel, Mrs. Ball.
 Dresser Runner, washable—Mrs. Ball, M. Dippel.
 Pincushion—Irene Schell, Mrs. Ball.
 Vanity Set—Maude Diemert, Geo. Helwig.
 Curtains—M. Dippel.
 Bordeaux Lamp—Geo. Horst, Bert Schmalz.
 Laundry Bag, emb.—M. Dippel, Mrs. Ball.
 Laundry Bag, any other—Bert Schmalz, Mary Bell.
 Night Robe, emb.—Mrs. Ball, M. Dippel.
 Night Robe, any kind—J. Bilger, M. Dippel.
 Step-in, fancy—J. A. Goetz.
 Combination—J. A. Goetz, Mrs. Ball.
 Negligee—Geo. Reinhart.
 Kimona—J. Bilger.
 Fancy Handkerchief—J. Bilger, Mrs. Ball.

(Continued on Page 8)