

Issued Each Week—Only One Dollar A Year

VOL. XXXII.

NUMBER 9

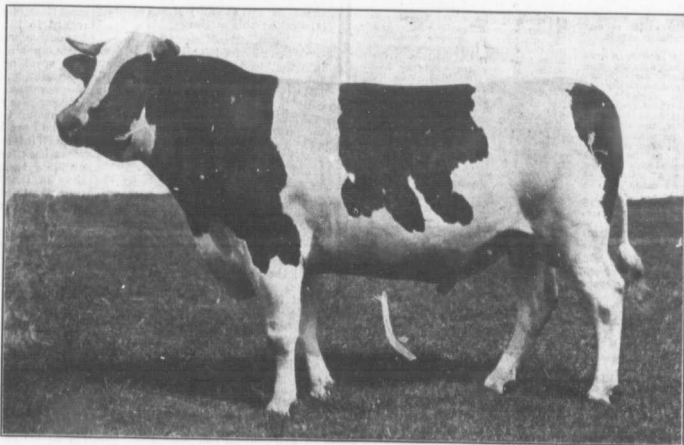
FARM AND DAIRY

RURAL HOME

PETERBORO, ONT.

FEBRUARY 27

1913



A MOST EXCELLENT TYPE OF A HOLSTEIN SHOW BULL

There is a great deal in this illustration that will merit the careful study of all Farm and Dairy readers who are interested in a superior type of a dairy sire. Note the great substance and general scale of this bull; his great constitution as indicated by depth and fullness of heart-girth,—also in head, which is broad in muzzle and typifying the of masculinity make-up throughout the animal. Note the full bright prominent eye, the well-developed appearance marked evidences of quality. He is Hillside Pietje, formerly heading John Arfmann's herd, in Orange Co., N.Y., and now owned by Mr. T. H. Russell, at Geneva, Ohio. His ideal characteristics are manifest in his progeny, some of which was inspected last summer by an editor of Farm and Dairy, while visiting Holstein breeders in New York State.

DEVOTED TO
BETTER FARMING AND
CANADIAN COUNTRY LIFE