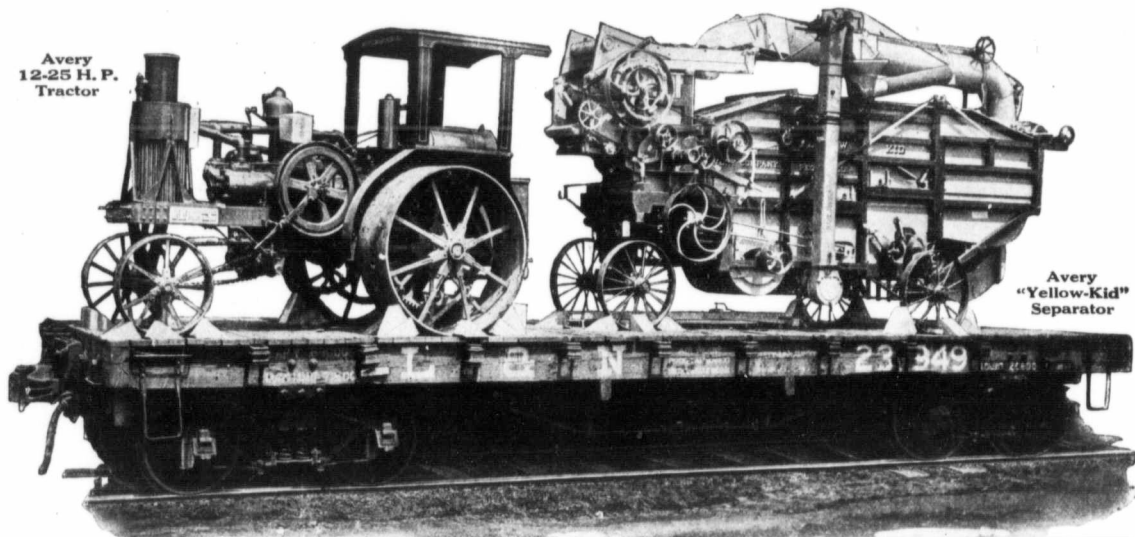


Avery
12-25 H. P.
Tractor

Avery
"Yellow-Kid"
Separator



Is One of These Outfits On the Way to You?

DO you realize what this Avery Tractor and Avery Thresher could do for you? With it you could Averyize all your farm work. With the tractor you could harvest your crops and save your horses. Do all your Fall plowing *on time* and get your seed bed in condition to raise a bumper crop again next year. With the thresher you could do your own threshing and possibly your neighbors'. The tractor will also give you the ideal belt power for silo filling, feed grinding, wood sawing and similar jobs. You could use this Avery tractor profitably *every month* of the year.

Get a Popular Avery at a Popular Price

This 12-25 Avery tractor is one of the most popular of our six sizes. Thousands have been sold and are being successfully used in every state in the Union.

It is the size Avery tractor that is meeting the biggest demands of farmers everywhere; it is the practical size for the average size farm and it is being sold at a price that you can afford.

If you have been thinking of getting a tractor, now is the time to get a real three-plow, one-man outfit at a low price, made by a company whose products are known the world over.

Get a Champion "Grain-Saver"

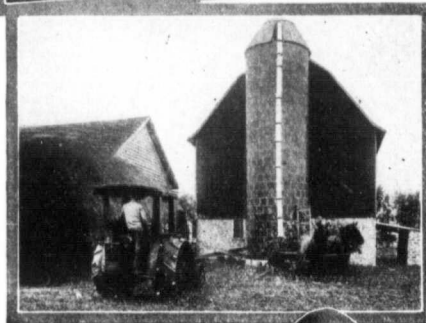
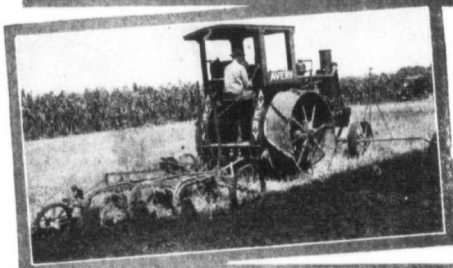
This Avery "Yellow-Kid" Separator is a champion grain-saver. Built just like our big "Yellow-Fellows"—the separators that beat the government

grain-saving record. It has the famous Guaranteed-for-Life Cylinder Teeth, the I. X. L. Grain Saving Device Fingers that hunt around in the straw for the last kernel and get it, and many other grain saving and cleaning features. Backed by the strongest definite grain-saving guarantee given with any make of separator.

This 12-25 Avery tractor and "Yellow-Kid" separator make just the outfit you need to Averyize your Fall work. If it will not fit your size farm, there are other sizes of Avery tractors and threshers that will. Avery tractors are built in six sizes: 8-16; 12-25; 14-28; 18-36; 25-50; and 40-80 H. P. All of the same design. Also a special 5-10 H. P. Avery for light work. There is a size Avery thresher and plow for every size Avery tractor.

Write for the Avery Catalog

and interesting Tractor Hitch Book which explains how to motorize your farm work. See sample machines at your nearest Avery dealer.



CANADIAN AVERY CO., LIMITED
Western Canadian Distributors
Branches at Regina, Calgary, Saskatoon
MAIN OFFICE, WINNIPEG
Sub-Branches at Lethbridge and Camrose

AVERY

Motor Farming, Threshing,
and Road Building Machinery

