

PASSENGER TRAFFIC

PASSENGER TRAFFIC

PASSENGER TRAFFIC

PASSENGER TRAFFIC

PASSENGER TRAFFIC

PASSENGER TRAFFIC

PASSENGER TRAFFIC



Through Sleeping Cars To NEW YORK

Lv. at 5.20 p.m. daily Lv. at 7.10 p.m. (ex. Sun.)
Ar. New York 7.50 a.m. Ar. New York 9.25 a.m.

A convenient DAY TRAIN leaves at 9.30 a.m., connecting with the EMPIRE STATE EXPRESS (except Sunday), arriving at New York 10.10 p.m.; and with the New York Special (Sunday only), arriving New York 11.02 p.m.

Other trains for New York leave at 1.15 and 3.35 p.m. daily except Sunday.

Tickets good on Hudson River Steamers, Albany to New York, without extra charge.

For Railroad tickets or additional information apply to Ticket Offices, Canadian Pacific Railway, 16 King Street, East, or Union Station; or Ticket Office, New York Central Lines, 80 Yonge Street.

Telephone, Main 4361



INTERCOLONIAL RAILWAY

THE OCEAN LIMITED

Leaves Montreal daily, except Saturday, 12.30, arrives St. John 12.35, Halifax 22.00, daily except Sunday.

ONLY ONE NIGHT ON THE ROAD BETWEEN

Western Ontario, St. John and Halifax

Saving Hours of Time

MARITIME EXPRESS

Leaves Montreal daily, 8.15, as far as Campbellton, daily except Saturday, for St. John and Halifax, arriving St. John 10.40, Halifax 12.30, daily except Sunday.

Through Sleeping Cars between Montreal, St. John and Halifax.

Dining Car Service unequalled.

Direct connection for Prince Edward Island and the Sydney.

Toronto Ticket Office, 51 King Street East.

FASTEST AND MOST CONVENIENT ROUTE TO MUSKOKA LAKES

Look at the time-table. You will find that "THE LAKE SHORE EXPRESS" connects with Steamer Sagamo and other Muskoka Navigation Company's steamers, and brings you to points in Muskoka.

HOURS EARLIER than other routes, arriving:
Port Sandfield 3.30 p.m.
Cleveland 4.00 p.m.
Royal Muskoka 4.45 p.m.
and other points in proportion.

Ticket Office, corner King and Toronto Streets, and Union Station, Tel. Main 5170.

Canadian Pacific Ry. EMPRESSES

And other Steamships

From Montreal and Quebec

FASTEST—FINEST

Hold all Records Between Liverpool and Canada

Third-class the Most Comfortable—All Closed Rooms and Best of Food.

L. E. SICKLING, General Agent for Ontario, 16 King St. E., Toronto.

Canada's Double Track Line.

FARM LABORERS' EXCURSIONS

\$10.00 to WINNIPEG
AND CERTAIN POINTS IN WESTERN CANADA, including Points on Grand Trunk Pacific Railway

Via Chicago, Duluth and Fort Frances

\$18.00 Additional Returning

Aug. 16th From Toronto and stations east in Ontario; also

Aug. 23rd east of Orillia and Scotia Junction in Ontario.

Aug. 25th From all stations Toronto, North Bay and west in Ontario.

From all stations Toronto and east of Orillia and Scotia Junction in Canada.

CANADIAN NATIONAL EXHIBITION, TORONTO

SINGLE FARE AUGUST 25th TO

SEPT. 9th INCLUSIVE

(Minimum Charge 25c.)

From all Stations in Canada West of Cornwall and Ottawa

SPECIAL LOW RATES AND TRAIN SERVICE ON CERTAIN DATES

THE POPULAR ROUTE to Muskoka, Lake of Bays, Temagami, Georgian Bay, Kawartha Lakes, Stony Lake, Magnesian River, French River, Algonquin Park, etc. LOW TOURIST RATES.

Full particulars from any Grand Trunk Agent, or address A. E. Duff, District Passenger Agent, Toronto.

SEPTEMBER 9th INCLUSIVE

From all stations in Ontario, Toronto and East, Orillia and Scotia Jct. and East on G. T. R., also Anish and Eastern Ontario.

From all stations Toronto to North Bay inclusive, and West.

From all stations Toronto and East in Ontario and Quebec, also east of Orillia, Scotia Jct. and North Bay.

From all stations in Ontario, Toronto and East, Orillia and Scotia Jct. and East on G. T. R., also Anish and Eastern Ontario.

From all stations Toronto to North Bay inclusive, and West.

From all stations Toronto and East in Ontario and Quebec, also east of Orillia, Scotia Jct. and North Bay.

From all stations in Ontario, Toronto and East, Orillia and Scotia Jct. and East on G. T. R., also Anish and Eastern Ontario.

From all stations Toronto to North Bay inclusive, and West.

From all stations Toronto and East in Ontario and Quebec, also east of Orillia, Scotia Jct. and North Bay.

From all stations in Ontario, Toronto and East, Orillia and Scotia Jct. and East on G. T. R., also Anish and Eastern Ontario.

From all stations Toronto to North Bay inclusive, and West.

From all stations Toronto and East in Ontario and Quebec, also east of Orillia, Scotia Jct. and North Bay.

From all stations in Ontario, Toronto and East, Orillia and Scotia Jct. and East on G. T. R., also Anish and Eastern Ontario.

From all stations Toronto to North Bay inclusive, and West.

From all stations Toronto and East in Ontario and Quebec, also east of Orillia, Scotia Jct. and North Bay.

From all stations in Ontario, Toronto and East, Orillia and Scotia Jct. and East on G. T. R., also Anish and Eastern Ontario.

From all stations Toronto to North Bay inclusive, and West.

From all stations Toronto and East in Ontario and Quebec, also east of Orillia, Scotia Jct. and North Bay.

From all stations in Ontario, Toronto and East, Orillia and Scotia Jct. and East on G. T. R., also Anish and Eastern Ontario.

From all stations Toronto to North Bay inclusive, and West.

From all stations Toronto and East in Ontario and Quebec, also east of Orillia, Scotia Jct. and North Bay.

From all stations in Ontario, Toronto and East, Orillia and Scotia Jct. and East on G. T. R., also Anish and Eastern Ontario.

From all stations Toronto to North Bay inclusive, and West.

From all stations Toronto and East in Ontario and Quebec, also east of Orillia, Scotia Jct. and North Bay.

From all stations in Ontario, Toronto and East, Orillia and Scotia Jct. and East on G. T. R., also Anish and Eastern Ontario.

From all stations Toronto to North Bay inclusive, and West.

From all stations Toronto and East in Ontario and Quebec, also east of Orillia, Scotia Jct. and North Bay.

From all stations in Ontario, Toronto and East, Orillia and Scotia Jct. and East on G. T. R., also Anish and Eastern Ontario.

From all stations Toronto to North Bay inclusive, and West.

From all stations Toronto and East in Ontario and Quebec, also east of Orillia, Scotia Jct. and North Bay.

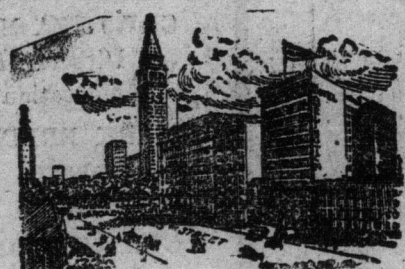
From all stations in Ontario, Toronto and East, Orillia and Scotia Jct. and East on G. T. R., also Anish and Eastern Ontario.

From all stations Toronto to North Bay inclusive, and West.

From all stations Toronto and East in Ontario and Quebec, also east of Orillia, Scotia Jct. and North Bay.

When in New York Stop at Either of These Hotels

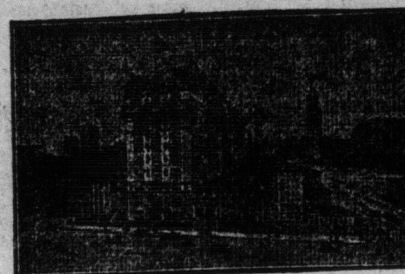
Special arrangements have been made with the following four hotels, whereby World excursionists will be provided with special rates and every courtesy a visitor could desire while in New York. Personal letters of introduction to the manager of the hotel desired are provided at time tickets are purchased. The hotels are situated as follows:



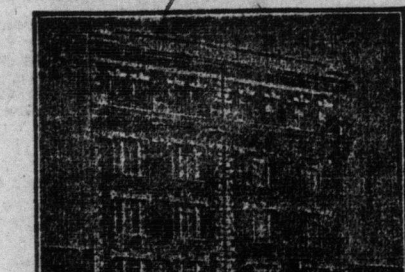
HOTEL ARLINGTON
18-20 West 25th Street.



SHERMAN SQUARE HOTEL
On Broadway, From 70th to 71st Street.



HOTEL BRISTOL
122 and 124 West 49th Street, Between Broadway and Sixth Avenue.



HOTEL EARLE
108-105 Waverly Place, One Block West of Fifth Avenue and Washington Arch.

In a recent letter to The World, the president and manager of one of the above hotels says:

"August is a very crowded month in New York. It is the month when a greater number of strangers are in the city than any other time, and is the most pleasant time of the year to visit, as all the theatres will be started, roof gardens in full swing, and the summer resorts at their height. I should like to take care of your people, and feel sure that your excursion this year will be very successful, as you are sending them out at a good time. I may state to you that any of your people who appear at our houses with letters of introduction from you will receive precedence over all others, except where reservations have been made in advance."

The Toronto World's SECOND

ANNUAL EXCURSION

To Niagara Falls Buffalo and New York

Via Niagara Navigation Company's boats to Lewiston, Gorge Route to Niagara Falls, Lehigh Valley Railroad to New York City, or all-rail route, G.T.R. and Lehigh Valley Railroad to New York.

Thursday, August 17th

Tickets good to return from New York up to Saturday, Aug. 26th, and on the Niagara Navigation Company boats from Lewiston up to Sept. 17th. Excursionists can remain over at Niagara Falls or Buffalo going or returning.

FARES:

By Rail and Boat from Toronto to New York and return..... **\$12.35**

All Rail from Toronto to New York and return..... **\$14.25**

All Rail from Suspension Bridge to New York and return..... **\$10.00**

All Rail from Hamilton to New York and return..... **\$12.35**

Children Over Five Years of Age and Under Twelve Years of Age Half Fare

This will be the greatest excursion of the year. Already a large number of World readers, both in and outside the city, have signified their intention of being present. There is more real solid enjoyment to be had in and around New York in August, when the theatres, roof gardens and other places of amusement are in full swing than anywhere else on the continent.

Buy Your Tickets at the World Office

and secure all the benefits to be had on the trip. You can secure your tickets and make your Pullman reservations any time now.

Time of Leaving Toronto

To New York Via All Rail

Leave Toronto 12.15 noon, due in Buffalo 5.20 p.m. Leave Buffalo 5.50 p.m., due in New York 7.38 a.m.

Leave Toronto 4.32 p.m., due in Buffalo 8.10 p.m. Leave Buffalo 9.00 p.m., due in New York 8.18 a.m. Pullman sleeper on this train, Toronto to New York: Lower berth, \$2.50; upper, \$2.00; full section, \$4.50.

Leave Toronto 6.10 p.m., due in Buffalo 9.55 p.m. Leave Buffalo 11.30 p.m., due in New York 10.48 a.m. Pullman sleeper from Buffalo to New York: Lower berth, \$2.00; upper berth, \$1.60; full section, \$3.60.

Excursion Tickets are good on the regular fast trains leaving Niagara Falls on Thursday, Aug. 17, at 4.12 a.m., 8.30 a.m., 4.22 p.m., 7.10 p.m. and 8.57 p.m. Train leaving Niagara Falls at 8.30 a.m. leaves Buffalo at 9.55 a.m. Train leaving Niagara Falls at 4.12 a.m. does not go to Buffalo.

To New York Via Niagara Line and Gorge Route

Leave Toronto at 11.00 a.m., arrive Niagara Falls at 2.25 p.m.; leave Niagara Falls at 4.22 p.m., arrive Buffalo 5.20 p.m.; leave Buffalo 5.50 p.m., arrive New York 7.38 a.m.

Leave Toronto 2.00 p.m., arrive Niagara Falls 5.30 p.m.; leave Niagara Falls 7.10 p.m., arrive Buffalo 8.10 p.m.; leave Buffalo 9.00 p.m., arrive New York 8.18 a.m.

Leave Toronto at 3.45 p.m., arrive Niagara Falls 7.25 p.m.; leave Niagara Falls 8.57 p.m., arrive Buffalo 9.55 p.m.; leave Buffalo 11.30 p.m., arrive New York at 10.48 a.m.

Leave Toronto 5.15 p.m., arrive Niagara Falls 8.40 p.m.; leave Niagara Falls 8.57 p.m., arrive Buffalo 9.55 p.m.; leave Buffalo at 11.30 p.m., arrive New York 10.48 a.m.

Special arrangements have been made for excursionists desiring to make the trip by day. Tickets by rail or boat to Suspension Bridge may be used previous to the 17th, and the train taken at Suspension Bridge, Niagara Falls, N.Y., or Buffalo, on the morning of the 17th. First train leaves Suspension Bridge at 4.05 a.m.; Niagara Falls, N.Y., 4.12 a.m., arriving in New York at 5.08 p.m. Second train leaves Suspension Bridge at 8.23 a.m.; Niagara Falls at 8.30 a.m.; Buffalo, 9.55 a.m., arriving in New York at 10.03 p.m. First train does not go via Buffalo.

Tickets by both rail and boat from Toronto to Suspension Bridge are good for 30 days; from Suspension Bridge to New York, ten days from Aug. 17. Tickets from Suspension Bridge to New York, or from Buffalo to New York, must be used on the 17th.

Tickets Now on Sale at the Office of THE TORONTO WORLD

World readers outside of Toronto desiring to take this trip should remit by express or postoffice order, making orders payable to The World Newspaper Company, Limited, Toronto, Ont.

If any additional information may be desired, call on, write to, or telephone The World's Excursion Manager, Toronto World Office. Telephone Main 5308.

Day's
Doings
in...

W. TORO
HELD

Fast Game
—To

GREEN

Davenport

Shamrocks.

As the

game in the

championship

tween the

the Toronto

the champio

respectively,

one, and an

fast football

The game

the Green

eral hundred

and nearly

Toronto lin

these, an in

Robertson,

League, and

president of

two teams;

Davenport

back, Tilley

half, Jones

(capt.); left

side wing,

Dummore,

left inside

ward Fidler

Green Riv

back, W. W.

half, Turne

left half, R

F. Booth (c

White; right

inside wing,

ward, Annie

The game

down field

10 minutes

corner kick

opponents

the Davenp

ing several

the Davenp

the opposit

several min

ing a good

on goal from

wide. "Tilley

sure goal, g

Immediately

ner for Dave

Shamrocks

free kick an

up. Dummo

against Dav

accidental

for goal whi

in. White (G

man, Daven

kick. The

Davenport

mage in w

blue were

and white

got the best

missing it

time. Score

Second h

Both teams

kicked behi

a place. T

close passi

18 yard lin

save from

fouls in a

brought the

where their

A free kick

play to the

minutes to

a kick on t

A close

Shamrocks'

combination

tempt on go

(G.R.). And

Dummore k

too high. I

taken by

field and p

White (G

for goal. S

Robertson,

the Green

instructed

kick. Fidler

of poste. R