

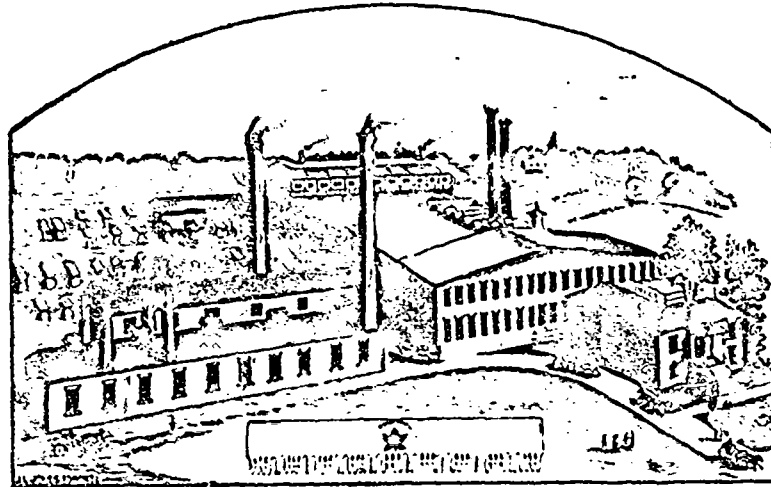
# THE MAPLE LEAF SAW WORKS



## Shurly & Dietrich GALT, ONT

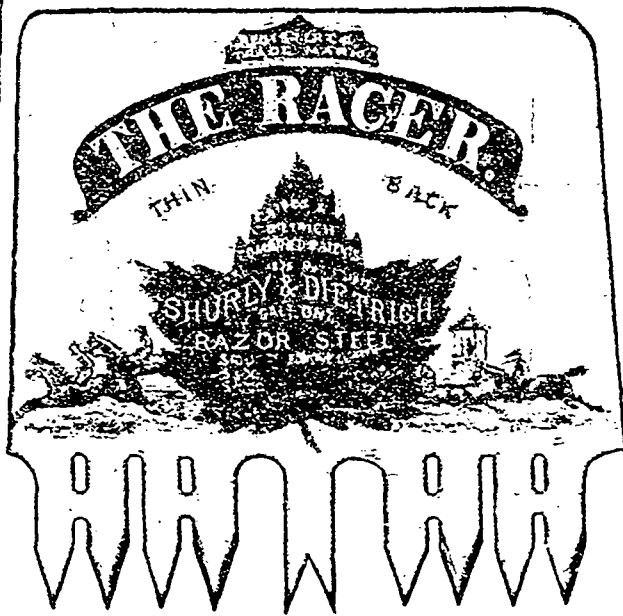
Manufacturers of

**CIRCULAR SAWS  
GANG SAWS  
MILL SAWS  
BAND SAWS  
CROSS-CUT SAWS**



Manufacturers of

**HAND SAWS  
BUCK SAWS  
PLASTERING TROWELS  
BUTCHER SAWS  
STRAW KNIVES, &c**



**GROUND THIN ON BACK**  
Save Labor      Save Gumming  
Save Time      Save Files

### This Saw Stands Without a Rival

AND IS THE

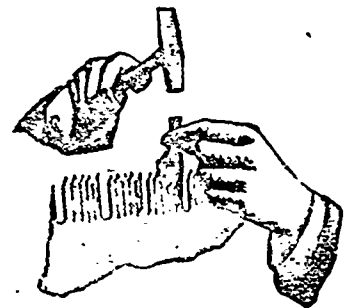
### FASTEST CUTTING SAW IN THE WORLD!

Its Superiority consists in its Excellent Temper. It is made of "Razor Steel," which is the finest ever used in the manufacture of Saws. We have the sole control of this steel. It is tempered by our secret process, which process gives a keener cutting edge and a toughness to the steel which no other process can approach.

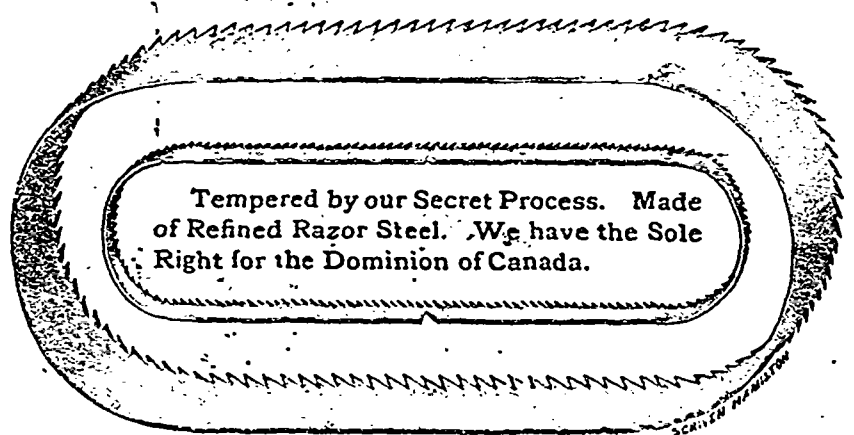
## Maple Leaf Saw Set

MANUFACTURED BY  
SHURLY & DIETRICH, Galt, Ont.

Directions. — Place the set on the point of tooth, as shown in the accompanying cut, and strike a very light blow with a tack hammer. If you require more set, file the tooth with more bevel.  
If you follow directions you cannot make a mistake. Be sure and not strike too hard a blow, and it will set the hardest saw. On receipt of 40 cents we will send one by mail.



We are the only manufacturers in the world who export Saws in large quantities to the United States.



Tempered by our Secret Process. Made of Refined Razor Steel. We have the Sole Right for the Dominion of Canada.

We Manufacture

## HIGH GRADE BAND SAWS

of All Widths and Lengths.

These Saws are made of Refined Swedish Steel imported direct, and tempered by our Secret Process; for Fine-Finish and Temper are not excelled.