



... THE ...
EMPLOYERS' LIABILITY

ASSURANCE CORPORATION

Limited

OF LONDON, ENGLAND

Capital - - - - - \$5,000,000.00

Reserves for Policy-Holders, \$836,805.00
 (Independently of Capital.)

Personal Accident—Health—Liability and Fidelity Insurance.

STANDS FIRST in the Liberality of its Policy Contracts—In Financial Strength—In the Liberality of its Loss Settlements.

Total Available Resources, \$6,000,000.

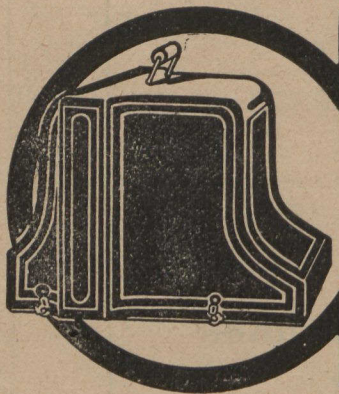
Deposited with the Receiver-General in Canada for the Benefit of Canadian Policy-Holders, \$120,450.00.

GRIFFIN & WOODLAND, Managers for Canada

HEAD OFFICES:

BRITISH EMPIRE BUILDING - - - - MONTREAL

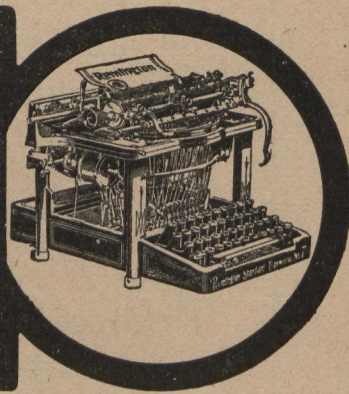
TEMPLE BUILDING - - - - TORONTO



Remington Typewriters

are strong and durable machines—every user says so.

Remington Typewriter Co.
 327 Broadway, New York.



Where the greatest and busiest enterprises centre—where the work is hardest—where the conditions are most exacting—where the need for strength and reliability is greatest—where there is no room for weaklings, whether they be men or machines, there you will always find the Remington Typewriter.

The Remington Typewriter Co., Limited

TORONTO LONDON HAMILTON MONTREAL WINNIPEG VANCOUVER OTTAWA ST. JOHN