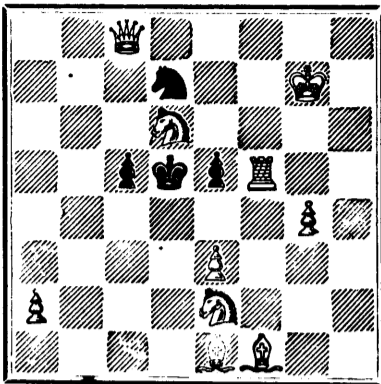


PROBLEM No. 230.

By J. W. Abbott.

BLACK.



WHITE

White to play and mate in two moves.

GAME 369TH.

(Land and Water.)

CHESS AT THE AQUARIUM.

The following gamikin is the skirmish between Mephisto and a young lady, to which we alluded last week:

(Philidor's Defence.)

- WHITE.—(Miss H. Down.) BLACK.—(Mephisto.)
1. P to K 4
 2. Kt to K B 3
 3. B to B 4
 4. P to Q 4
 5. Castles (b)
 6. Kt takes P
 7. Q takes Kt
 8. Q to Q sq
 9. Kt to B 3
 10. B to K Kt 5
 11. R to K sq (f)
 12. Kt to Q 5
 13. P to K B 3
 14. P takes P
 15. P to K 5

NOTES.

- (a) Relying upon himself and also upon his adversary.
- (b) The best reply is P takes K P, followed if B P takes K P by Q to Q 5.
- (c) P takes K P would give him the advantage. White's best play, in reply thereto, would be to sacrifice the Knight. The following variation will illustrate some of the points: 5 P takes K P, 6 P takes P, P takes Kt, 7 Q takes P, 8 R to K sq, Kt to B 3 (if Q to K 2 then Q to Q B 3, threatening P to B 4), 9 B to B 4, etc. We may remark that 6 Kt to Kt 5 looks more unsatisfactory than it really is.
- (d) Not good, but a satisfactory move is not to be found. Kt to B 3 at once is probably his best resource.
- (e) He is in a bad plight altogether. B to K 2, if better, is hopeless enough, and B to B 4 is answered by R to K sq.
- (f) Kt takes P drives the K to Q sq, and Kt to Q 5 sends the Queen back there. While preferring either of these continuations to the text move, we consider that the latter is in a good style, as being devoid of that impetuosity which might be expected from a young lady player.
- (g) If B to K 3, then B takes Kt followed by B takes B.
- (h) And quite right too, as an examination of the overpowering nature of White's really fine move will make evident. Mephisto showed himself to be a good-humored loser, for, after resigning, he in a most courteous manner offered his hand to his fair opponent, who accepted the compliment, being evidently under the impression that a demon who behaved like a gentleman, should be treated as such.

SOLUTIONS.

Solution of Problem No. 128.

- WHITE. BLACK.
1. R to K 5
 2. Q to K R 7
 3. Q Mates accordingly
- There are other defences.

Solution of Problem for Young Players No. 226.

- WHITE. BLACK.
1. R to K Kt 3
 2. Mates acc.

PROBLEMS FOR YOUNG PLAYERS, No. 227.

- WHITE. BLACK.
- K at K sq
 - Q at Q R 3
 - B at Q R 8
 - B at K R 6
 - Kt at Q B 6

White to play and mate in two moves.

60 Perfumed Cards—Motto, Lilly, Floral, Rose Bud—with name and case, 10 cts. AETNA CARD CO., Clintonville, Ct.

52 Perfumed Ocean Gems and Gilt Edge Assorted Cards, name in gold, 10c. ELLA RAY, W. Haven, Conn.

10,000 Articles of Scientific Interest for Gifts, Presents, &c. Send for catalogue. HEARN & HARRISON, Opticians, Montreal.

AGENTS, READ THIS.

We will pay Agents a salary of \$100 per month and expenses, or allow a large commission to sell our new and wonderful inventions. We mean what we say. Sample free. Address,

SHERMAN & CO., Marshall, Mich.

\$10 to \$1000 invested in Wall St. Stocks makes fortunes every month. Book sent free explaining everything. Address BAXTER & CO., Bankers, 17 Wall St., N. Y.



Tenders for Steel Rails.

TENDERS addressed to the Honourable the Minister of Railways and Canals will be received at the Canadian Emigration Office, 31 Queen Victoria street, E. C., London, England, until JULY 15th, next, for Steel Rails and Fastenings, to be delivered at MONTREAL, as follows:

5,000 tons by October 1st, 1879.

5,000 tons by June 1st, 1880.

5,000 tons by October 1st, 1880.

Specifications, Conditions, Forms of Tender, and all other information will be furnished on application at this office, or at the Canadian Emigration Office, 31 Queen Victoria street, E. C., London, England.

By order,

F. BRAUN, Secretary.

Department of Railways and Canals,
Ottawa, 13th June, 1879.



Pacific Railway Tenders.

TENDERS for the construction of about one hundred miles of Railway, West of Red River, in the Province of Manitoba, will be received by the undersigned until noon on Friday, 1st August next.

The Railway will commence at Winnipeg, and run north-westerly to connect with the main line in the neighbourhood of the 4th base line, and thence westerly between Prairie Portage and Lake Manitoba.

Tenders must be on the printed form, which, with all other information, may be had at the Pacific Railway Engineer's Offices, in Ottawa and Winnipeg.

F. BRAUN,

Secretary.

Department of Railways and Canals,
Ottawa, 16th June, 1879.

\$777 A Month and expenses guaranteed to Agents. Outfit free. SHAW & CO., AUGUSTA, MAINE.

\$777 A YEAR and expenses to agents. Outfit Free. Address: P. O. VICKERY, Augusta, Maine.

50 Perfume, Snowflake, Chromo, Motto Cards, name in gold & jet, 10c. G. A. SPRING, E. Wallingford, Ct.

The Scientific Canadian

MECHANICS' MAGAZINE,

AND

PATENT OFFICE RECORD,

A MONTHLY JOURNAL

Devoted to the advancement and diffusion of
Practical Science, and the Education of
Mechanics.

THE ONLY SCIENTIFIC AND MECHANICAL PAPER
PUBLISHED IN THE DOMINION.

PUBLISHED BY

THE BURLAND-DESBARATS LITH. CO.

OFFICES OF PUBLICATION:

5 and 7 Bleury Street, Montreal.

G. B. BURLAND, General Manager.

F. N. BOXER, ARCHITECT & CIVIL ENGINEER, Editor.

TERMS:

One copy, one year, including postage....\$2.00

One copy, six months, including postage.... 1.10

Subscriptions to be paid in ADVANCE.

The following are our advertising rates:—For one monthly insertion, 10 cts. per line; for three months, 9 cts. per line; for six months, 8 cts. per line; for one year, 7 cts. per line; one page of illustration, including one column description, \$30; half-page of illustration, including half column description, \$20; quarter-page of illustration, including quarter column description, \$10.

10 per cent. off on cash payments.

INVENTIONS AND MACHINERY, &c., or other matter of an original, useful, and instructive character, and suitable for subject matter in the columns of the MAGAZINE, and not as an advertisement, will be illustrated at very reduced rates.

REMITTING MONEY.—All remittances of money should be in the form of postal-orders. When these are not available, send money by registered letters, checks or drafts, payable to our order. We can only undertake to become responsible for money when sent in either of the above ways.

This journal is the only Scientific and Mechanical Monthly published in Canada, and its value as an advertising medium for all matter connected with our Manufactories, Foundries, and Machine-Shops, and particularly to Inventors, is therefore apparent.



NOTICE!

TUESDAY, 1st JULY, being

DOMINION DAY,

this Office and the three Receiving Houses will be closed at 10 a.m., unless the mails received up to that time shall not then have been distributed.

The afternoon mails will be closed at 10 a.m., the supplementary for England at 3 p.m., and the night mails at the usual hours.

G. LAMOTHE, P.M.

28th June, 1879.

GRAY'S SPECIFIC MEDICINE.

TRADE MARK. The Great English Remedy, will promptly and radically cure any and every case of Nervous Debility and Weakness, result of Indiscretion, excess or overwork of the brain and nervous system; is perfectly harmless, acts like magic, and has been extensively used for over thirty years with great success.

Before Taking. After Taking.

Full particulars in our pamphlet, which we desire to send free by mail to every one. The Specific Medicine is sold by all druggists at \$1 per package, or six packages for \$5, or will be sent free on receipt of the money by addressing

THE GRAY MEDICINE CO.,

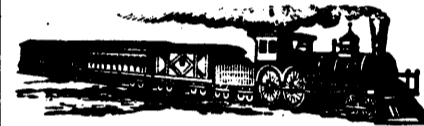
TORONTO, ONT.

Sold in Montreal by all Wholesale and Retail Druggists, and everywhere in Canada and United States.

N.B.—The demands of our business have necessitated our removing to TORONTO, to which place please address all future communications.

50 Perfumed Chromo and Lace Cards, name in gold in fancy case, 10c. Davids & Co., Northford, Ct.

60 CHROMO, MOTTO, Gilt-Edge & Lilly cards, with name, 10c. Globe Print. Co., Northford, Ct.



GOVERNMENT RAILWAY.

Western Division.

SHORTEST AND MOST DIRECT ROUTE TO OTTAWA.

On and after MONDAY, APRIL 14th, Trains will leave HOCHELAGA DEPOT as follows:—

	A. M.	P. M.
Express Trains for Hull at.....	9.30 and 5.00	
Arrive at Hull at.....	2.00 p.m. and 9.30	
Express Trains from Hull at.....	9.10 and 4.45	
Arrive at Hochelaga at.....	1.40 p.m. and 9.15	
Train for St. Jerome at.....	5.30 p.m.	
Train from St. Jerome at.....	7.00 a.m.	

Trains leave Mile-End Station ten minutes later.

Magnificent Palace Cars on all passenger trains.

General Office, 13 Place d'Armes Square

STARNES, LEVE & ALDEN,

Ticket Agents,

Offices 202 St. James and 158 Notre Dame Streets.

C. A. SCOTT,

Gen'l Superintendent Western Division.

C. A. STARK,

Gen'l Freight and Passenger Agent.

THE COOK'S FRIEND

BAKING POWDER

Has become a HOUSEHOLD WORD in the land, and is a

HOUSEHOLD NECESSITY

in every family where Economy and Health are studied. It is used for raising all kinds of Bread, Rolls, Pastry, Cakes, Griddle Cakes, &c., &c., and a small quantity used in Pie Crust, Puddings, or other Pastry, will save half the usual shortening, and make the food more digestible.

THE COOK'S FRIEND

SAVETIME,

IT SAVES TEMPER,

IT SAVES MONEY.

For sale by storekeepers throughout the Dominion, and wholesale by the manufacturer.

W. D. McLAREN, UNION MILLS,

17-19-21-23

55 College St. est.

PEA SOUP!

SYMINGTON'S

Prepared Pea Soup

Made from the Celebrated Pea Flour, to which is added

LEIBIG'S EXTRACT OF MEAT.

DELICIOUS, NOURISHING

ANTI-DYSPEPTIC.

Made in one minute, without boiling.

Sold everywhere in 25ct. tins. Wholesale by

WILLIAM JOHNSON,

28 St. Francois Xavier Street, Montreal.

British American

BANK NOTE COMPANY,

MONTREAL.

Incorporated by Letters Patent.

Capital \$100,000.

General Engravers & Printers

Bank Notes, Bonds,
Postage, Bill & Law Stamps,
Revenue Stamps,
Bills of Exchange,
DRAFTS, DEPOSIT RECEIPTS,
Promissory Notes, &c., &c.,
Executed in the Best Style of Steel Plate
Engraving.
Portraits a Specialty.
G. B. BURLAND,
President & Manager.

JUST PUBLISHED

CHISHOLM'S ALL-ROUND ROUTE AND PANORAMIC GUIDE OF THE ST. LAWRENCE,

With corrections to date. It contains full descriptions of the points of interest on the "All Round Route," including Hudson River, Trenton and Niagara Falls, Toronto, Ottawa, Montreal, Quebec, Saguenay River, White Mountains, Portland, Boston, New York. It is profusely illustrated, and is furnished with maps of the Route, and a fine panoramic view of the St. Lawrence River. For sale by booksellers and news agents. Sent post-paid to any address on receipt of the price, 50 cts.

C. R. CHISHOLM & BROS.,

26-52-373

179 Bonaventure street, Montreal.

CHEAPEST AND BEST.



JOHN DOUGALL & SON,

218 and 220, St. James Street, Montreal.

Electrotyping and Job Printing, Chromatic and plain

TO LET.

In those central premises forming the corner of Bleury and Craig Streets, and in the adjacent house on Craig Street—

OFFICES, double and single.
FLATS, admirably adapted for light manufacturing business, with or without steam power. Rent moderate.

Apply to

G. B. BURLAND,
No. 7 Bleury Street.