

THE LIVERPOOL & LONDON AND GLOBE

INSURANCE COMPANY.

CAPITAL, SURPLUS, and RESERVED FUNDS	-	\$16,271,675
INVESTED IN CANADA	- - - - -	250,000
<hr/>		
PREMIUMS RECEIVED IN 1866, were	- - - - -	\$5,362,260
DAILY PREMIUMS, UPWARDS OF	- - - - -	17,000

Shareholders personally responsible for engagements of the Company.
All Directors must be Shareholders.

HEAD OFFICES:

LIVERPOOL.

LONDON.

MONTREAL.

CANADA BOARD OF DIRECTORS.

T. B. ANDERSON, Esq., Chairman, (President Bank of Montreal.)
HENRY STARNES, Esq., Deputy Chairman, (Manager Ontario Bank.)
E. H. KING, Esq., (General Manager Bank of Montreal.)
HENRY CHAPMAN, Esq., Merchant.
THOMAS CRAMP Esq., Merchant.

G. F. C. SMITH, *Resident Secretary.*

F. A. BALL, Hamilton, C. W. } *Inspectors.*
JAMES SPIER, Montreal, }

FIRE DEPARTMENT.—Insurances effected on all classes of Property at Current Rates. Farm Risks at Specially Reduced Rates.

LIFE DEPARTMENT.—No Extra Charge for Military Service in Defence of the Country. Life Policies for the benefit of Wife or Children are secure from seizure by Creditors. Claims payable one month after proof of death.

All Bonuses, Stated and Guaranteed (a system peculiar to this Company). At age 50, by payment of \$26.00 yearly for 20 years only, a policy of \$1000 is secured, payable at death.

"TABLES OF RATES"

adapted to the circumstances of all classes may be obtained at the Montreal Offices and of the Company's Agents generally throughout the Provinces.

Canada Business under the sole control of the Montreal Board.

AGENCIES established throughout Canada.

G. F. C. SMITH,
Resident Secretary Canada Branch,
Montreal.

10.7

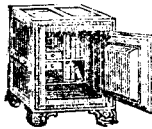
IMPORTANT TO FARMERS.

CANADIAN SUPER-PHOSPHATE.—A Standard Manure for all Field and Garden Crops. It matures crops from ten to twenty days earlier, and greatly increases the yield.

Price \$50 per ton, in barrels of about 225 lbs. each.

It is also put up in \$1 packages for retail.

E. L. SNOW,
Manufacturer, Montreal.



KERSHAW
&
EDWARDS

Manufacturers of
SALAMANDER SAFES,
Secured with Powder Proof Locks.
Also, Combined Iron and Steel Specie Chests
and Doors, Combination Bank Locks, &c.

Warerooms:
82 and 84 St Francois Xavier Street,
Montreal.

4.7